

April 2004

Roadrunner News

Newsletter of the Long Beach Cactus Club

Founded 1933; Affiliate of the Cactus and Succulent Society of America, Inc.

WHIRLWIND TRIP THROUGH MEXICO

PROGRAM: KELLY GRIFFIN, will present a slide lecture on his most recent trip to Mexico. Last month he visited eighteen states (including Oaxaca, Vera Cruz, Jalisco, Sinaloa, etc.), traveling from Arizona to Chiapas and back in two weeks! *Agaves* and *Echeverias* will be featured as well as many other succulents and cacti of the regions. Kelly is currently Curator of Succulent Plants at the Rancho Soledad Nursery. He has spoken to us previously about *Dudleyas*, *Aloes* and *Agaves* and previous trips.

LOCATION: Dominguez Adobe, 18127 South Alameda Street, Rancho Dominguez, CA 90220. Take the 91 Redondo Beach/ Artesia Freeway and exit south on Alameda. Signs for the Adobe are posted on the freeway and on Alameda. Coming from the freeway, the entrance to the Adobe is on the right or west side of Alameda. We will meet in the cafeteria in the northeast of the big building next to the garden.

TIME: Sunday, April 25, 2004 at 1:30 p.m. Our use of the cafeteria is limited to the hours 1:30 p.m. to 4:30 p.m. Because of this constraint we will follow this schedule: 1:30 to 2:00 -- setup and refreshments, 2:00 to 4:00 -- general meeting and program, 4:00 to 4:30 -- cleanup.

PLANT-OF-THE-MONTH: Cactus: Crest/Monstrose
Succulent: Crest/Monstrose

REFRESHMENTS: We will follow the alphabet to determine who is to bring the snacks and finger foods. This month, those with last names starting with the letters **T through W** are asked to bring the goodies. Please feel free to bring something even if you don't fall into this group.

DOOR PRIZES, BIRTHDAY PLANTS & PLANT SALES: Free plant for first time visitors.

PLANT RAFFLE: Tickets are \$1.00 each or six for \$5.00. Members are asked to donate any plants they would like to pass along that they think others would like to buy. Previous months' raffles have been big successes with several dozen plants available.

2004 LBCC PROGRAMS AND EVENTS

Woody Minnich, Programs (661) 944-2784

May 23	Juergen Menzel	COLD HARDY CACTUS OF THE U.S.
Jun. 27	Tom Knapik	CHILE. (Tentative)
Jul. 25	Harry & Sandy Fletcher	STAGING FOR BEGINNERS.
Aug.	NO MEETING	INTERCITY SHOW — Aug. 14-15
Sep. 26	ANNUAL AUCTION	LBCC PLANT AUCTION.
Oct. 24	Woody Minnich	RECENT MINIATURE JEWELS OF MEXICO.
Nov. 21	Phil Favell	YEMEN.
Dec. 12	🌵🌵🌵	HOLIDAY FEAST, FESTIVITIES & AUCTION.

LBCC OFFICERS AND BOARD MEMBERS FOR 2004

PRESIDENT Hank Warzybok (562) 429-7110	SECRETARY Lisa Smith (562) 439-8056	
VICE-PRESIDENT Gary Duke (714) 840-0505	TREASURER Sandra Fletcher (310) 538-4078	

DIRECTORS, in alphabetical order, are John & Edwina Caceres, Bob Gillett, Dick Hulett (Past President), and Dot Miller.

COMMITTEES:

AFFILIATE REPRESENTATIVE Lisa Smith	NEWSLETTER Lisa Smith	
BIRTHDAY/PRIZE PLANTS Jim Hanna	PROGRAMS Woody Minnich	
GARDEN CURATOR Open	PUBLICITY - LOCAL Carol Causey	
HISTORIAN Laverne Pitzer	PUBLICITY - SHOWS Dick Hulett	
INTER-CITY SHOW CHAIRMAN Harry Fletcher	REFRESHMENTS Edwina Caceres	
LIBRARY Carol Causey	Frances Gillett	
MEMBERSHIP Sandra Fletcher	SHOW & TELL TABLE Carol Causey	
	SUNSHINE Dot Miller	

MEMBERSHIP

SEND APPLICATIONS to Sandra Fletcher, (310) 538-4078, P.O. Box 3366, Gardena, CA 90247-7066. **Dues** are \$10 per year for regular membership, seniors \$7; each associate member (same household) \$2.50 additional. (Senior membership is for retired persons, 65 and older.) Checks should be made out to **LBCC**.

IF FOUR OR FIVE OR MORE MEMBERS are interested they may order **official Long Beach Cactus Club member badges**. The cost is \$6.50 per person. Please see treasurer, Sandra Fletcher, at the meeting.

NEWSLETTER

IF YOU HAVE ANY STORIES, cultivation tips, information about upcoming calendar events or news in general about cacti and succulents that might interest our members, please send them in or give me a call. Comments and suggestions are always welcome. Remember, this is your newsletter. The address is: E. Lisa Smith, 2075 E. Appleton St. #24, Long Beach, CA 90803-6205. Telephone: (562) 439-8056.

CLARENCE B. WRIGHT MEMORIAL DESERT GARDEN

COME AT 12:00 P.M., AN HOUR BEFORE THE REGULAR MEETING and help plant, water and maintain our garden. Find out what's blooming each month and get ideas for your home garden.

SPECIAL THANKS to the **CLARETIAN ORDER** for allowing us to use the grounds of the **DOMINGUEZ SEMINARY** for our auction and the cafeteria for our monthly meetings. We appreciate the pleasant setting as well as being able to meet near our garden.

Southern California Cactus and Succulent Events – 2004

(PLEASE VERIFY BEFORE GOING TO THE EVENT.)

- | | |
|-------------------|--|
| Apr. 24-25 | Green Scene Plant Sale , Fullerton Arboretum |
| May 1-2 | Sunset Succulent Society Show & Sale , Veterans Memorial Center, Garden Room, 4117 Overland Ave., Culver City, CA. (310) 822-1783. |
| May 1-2 | UC Irvine Spring Perennial Sale , admission \$2, Laura Lyons (949) 824-5833. |
| May 16 | Epiphyllum Society Show & Sale , LA County Arboretum, 301 N. Baldwin Ave., Arcadia, CA. (310) 831-1209. |
| May 16 | Huntington Botanical Garden Spring Sale , Huntington Botanical Gardens, 1151 Oxford Road, San Marino, CA. 10 to 5. (626) 405-2160. |
| May 22-23 | Gates Cactus & Succulent Society Annual Show & Sale 2004 , Jurupa Mountains Cultural Center, 7621 Granite Hill Dr., Riverside, CA 92509. |
| Jun. 5-6 | San Diego Cactus & Succulent Society Show & Sale , Balboa Park, Room 101, San Diego, CA. (619) 477-4779. |
| Jul. 1-3 | CSSA Show and Sale , Huntington Botanical Garden, San Marino, CA. Plant sales only on the 1 st (free admission day). (626) 405-2160 or 2277. |
| Aug. 14-15 | Inter-City Cactus and Succulent Show , LA County Arboretum, 301 N. Baldwin Ave., Arcadia, CA. |
| Sep. 4 | 21st Huntington Succulent Symposium , Huntington Botanical Gardens, San Marino. |
| Oct. 9-10 | San Gabriel Valley C&SS Winter Show , LA County Arboretum, 301 N. Baldwin Ave., Arcadia CA. |

2004 PLANT-OF-THE-MONTH RULES

At the April, 2003 meeting, the following rules were adopted for the Plant-of-the-Month (POM) competition:

- A maximum of three plants may be entered in each category (cactus and succulent).
- There will be three classes for entrants: advanced (blue tag), intermediate (pink tag) and beginner (yellow tag).
- Advanced and intermediate entrants must have had the plant in their possession for at least six months, beginners for three months.
- Entrants will receive 8 points for first place, 6 points for second place, 4 points for third place, 2 points for show/honorable mention (HM) and 1 point for showing a plant that does not place.
- At the discretion of the judges there may be up to three third places in a category. If plants are not deemed to be of sufficient quality, no third place will be awarded.
- For an entrant to receive points, the entry tags must be collected by the person in charge of record keeping for POM.
- At the annual Christmas party, award plants will be presented to the ten highest cumulative point holders regardless of class.

2004 LBCC PLANTS-OF-THE-MONTH

<u>MONTH</u>	<u>CACTUS</u>	<u>SUCCULENT</u>
January	<i>Astrophytum</i>	<i>Agave</i>
February	<i>Mammillaria</i> straight spine	<i>Haworthia</i>
March	Opuntioideae	<i>Adromischus</i>
April	Crest/monstrose	Crest/monstrose
May	<i>Stenocactus/Echinofossilocactus</i>	Bromeliaceae
June	Favorite Cacti (3)	Favorite Succulent (3)
July	<i>Neoporteria/Neochilenia</i>	Caudiciform <i>Euphorbia</i> of Africa
August		
September		
October	<i>Parodia/Notocactus</i>	<i>Pachypodium</i>
November	Miniatures under 3" (3)	Miniatures under 3" (3)
December		

Inter-City Show & Sale

LBCC Auction

HOLIDAY PARTY

2004 POM YEAR-TO-DATE STANDINGS THROUGH MARCH

<u>Advanced</u>	<u>Intermediate</u>	<u>Beginner</u>
1. Fletcher, H.&S 43	1. Jaskulski 50	5. Caceres 20
2. Hulett 37	2. Miller 37	6. Tan, S. 9
3. Hanna 19	3. Pitzer 36	1. Luhnnow 61
4. Duke 16	4. Gillett 35	2. Ohlinder 42
		3. Tan, K. 13
		4. Crowley 8

MARCH PLANT-OF-THE-MONTH WINNERS

Judges: Gary Duke, Gloria Crowley, Bob Gillett

Cactus - Advanced

NONE

Succulent - Advanced

1. H. & S. Fletcher *Adromischus marianae* v. *herrei*
3. H. & S. Fletcher *Adromischus marianae* v. *herrei*

Cactus - Intermediate

1. Laverne Pitzer *Tephrocactus papyracanthus*
2. Sokhara Tan *Opuntia* sp.
3. Phyllis Jaskulski *Tephrocactus strobiliformis*
- HM Dot Miller *Opuntia rufida* monstrose

Succulent - Intermediate

1. Phyllis Jaskulski *Adromischus cristatus*
2. John Caceres *Adromischus sphenophyllis*
3. John Caceres *Adromischus cooperi*
- HM Sokhara Tan *Adromischus* sp.

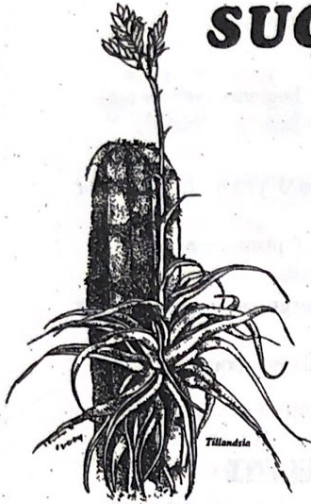
Cactus - Beginner

1. Kimberly Tan *Opuntia* sp.
2. John Luhnnow *Tephrocactus papyracanthus* (?)
3. John Luhnnow *Tephrocactus strobiliformis* (?)

Succulent - Beginner

1. Karenn Ohlinder *Adromischus cooperi*
2. John Luhnnow *Adromischus cristatus*
3. Kimberly Tan *Adromischus cristatus*

CACTUS & SUCCULENT SHOW & SALE



Information: 310/822-1783

Club Meetings: 1st Tuesday of each month (except July & August) at 7:30 PM
 Bertram W. Chase Park, 13650 Midway Way
 Marina Del Rey



**garden room, veteran's memorial bldg.
 4117 overland (at culver), culver city**

MAY 1 - 2
 ...free admission...

PLANT SALE: SATURDAY 10 - 5
 SUNDAY 10 - 4

SHOW: SATURDAY 12 - 5
 SUNDAY 10 - 4

**SPECIAL: LA BALLONA BROMELIAD SOCIETY
 SHOW & SALE**
 (Auditorium) Same location/date

GATES CACTUS & SUCCULENT SOCIETY ANNUAL SHOW & SALE 2004



GREEN FAIRE 2004
 The Inland Empire's own

Children's Activity Table
 Make your Own Succulent Garden

May 22nd and May 23rd
 Saturday and Sunday
Show Hours **Sale Hours**
 12:00 - 5:00 Sat. 9:00 - 5:00 Sat.
 9:00 - 3:00 Sun. 9:00 - 3:00 Sun

**More than 400 Specimen
 Cacti and Succulents on display
 In a Judged Show.
 Thousands of Rare and Exotic
 Succulents for sale by
 Gates Cactus & Succulent Society
 Member hobbyists and Growers.**

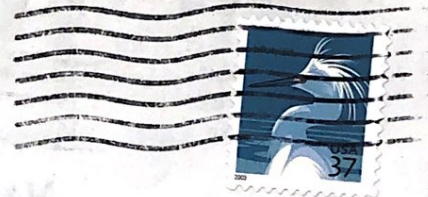
Visit and Buy Plants From These
 Society Members:
 Inland Empire Rare Fruit Growers,
 Orchid Society,
 Kei Society,
 SB County Master Gardeners,
 Inland Iris Society
 California Native Plant Society
 Granite Hill Gardens Nursery
 Master Gardeners & Composters

WHERE?

**The Jurupa Mountains Cultural
 Center**
 7621 Granite Hill Dr.
 Riverside, CA 92509
 Between Pyrite and Valley Way
 On the 60 Freeway

Roadrunner News

Newsletter of the Long Beach Cactus Club
 2075 E. Appleton St. #24
 Long Beach, CA 90803-6205



FIRST CLASS PLEASE

