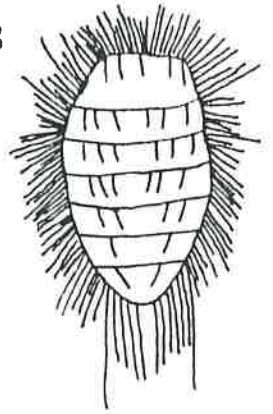


LONG BEACH CACTUS CLUB
CACTUS COMPANION



JANUARY 1989

Newsletter

January Meeting

Program Chairperson Audrey Tucker reports --
ELEANOR BARKER WILL PRESENT HER PROGRAM:

Sunday January 22, 1PM

PEST CONTROL! OR, KILL, KILL, KILL!

Eleanor Barker, "the Bug Lady," will "lead" the program in a panel discussion on pest control.

YOU (THE CLUB MEMBERS) ARE THE PANEL! With Eleanor's expertise and the members' experiences with both successes and failures, we can get the jump on all those little beasties that come out in the spring.

BRING QUESTIONS, EXPERIENCES, DESCRIPTIONS, PHOTOS, DRAWINGS!

* * * * *

WHEN: SUNDAY

LOCATION: Community Room of the Lakewood Library opposite the Mall on Clark. Lots of parking.

PLANTS OF THE MONTH: CACTUS: The Cereusly Columnars! Cereus types!
SUCCULENT: Little Lilies of the Veld: Gasterias, Haworthias, & miniature Aloes.

More info. on these inside newsletter. Study sheets at meeting (hopefully)

Refreshments

ANYONE WHO CAN BRING MUNCHIES! Thank you in advance to those who nourish us.

DOOR PRIZES, BIRTHDAY PLANTS, END-OF-MEETING PRIZES AND **Brag Table**

ALSO, IF YOU CAN HOST THE BOARD MEETING ON THE 29th LET THE CLUB KNOW!

VISITORS WELCOME

1989 Officers

President Rowena Thompson 213-835-0393; VP Kathi Reyes 213-591-7330; Secretary Pat Kelley 213-639-6439; Treasurer Jim Hanna 213-920-3046; Board Members: Eleanor Barker, Larry Grammer, Bill Hagblom, Laverne Pitzer, & Audrey Tucker.

MEMBERSHIP: Regular membership is \$8, seniors \$5, & each associate (same household) membership is \$1.50, regardless of age. (A senior membership is for retired persons, age 65.) Please send check made out to the LBCC to Jim Hanna, 6019 Pepperwood Ave., Lakewood 90712.

THANK YOU TO ALL OUR OFFICERS & HARDWORKING COMMITTEE CHAIRMEN & MEMBERS!!!! THE SOCIETY COULD NOT DO IT WITHOUT YOU!!!!

WANTED: A FEW MORE DEDICATED PEOPLE TO HELP OUT. THERE ARE BIG JOBS AND LITTLE ONES. AND BECOMING INVOLVED IS THE WAY TO LEARN AND TO HAVE FUN & BECOME REALLY ONE OF THE GROUP!

NEEDED: ALONG WITH A PUBLICITY CHAIRMAN VOLUNTEER, WE ALSO NEED A REFRESHMENTS CHAIRMAN VOLUNTEER! PLEASE LET ONE OF THE OFFICERS KNOW IF YOU CAN HELP!

don't forget...Dues are Due

GOOD NEWS: The CSSA Newsletter, edited by Eleanor Barker, is full of information, including reports on the expansion of two parks important to the conservation of cacti and succulents. These parks are: Big Bend National Park in Texas, and Guadalupe National Park. Also, Mexico is again considering establishing a Mexican extension of Big Bend, to be an international park.

The CSSA Newsletter comes to you if you join our National Society. To do so, send \$6 + \$1 per associate member to Dorothy Williams, 6240 Wildomar Way, Carmichael, CA 95600. To subscribe to the National Journal, send \$22 to The Cactus & Succulent Journal, c/o of Allen Press, P.O. Box 368, Lawrence, KS 66044. Make checks payable to CSSA. To subscribe to both the Journal & CSSA, send the \$22 plus \$6 or \$7 to Allen Press.

THANK YOU!

Thank you to all who made our Holiday Party such a success. We thank the Tuckers who hosted the party at their beautiful home; we thank Laverne & Rowena for baking the ham and turkey; we thank Lillian True for her special induction of officers - she makes things both special & fun!; and thank you to all who came & brought goodies & plants for the gift exchange & all who brought delicious food for the feast. It was a wonderful party!

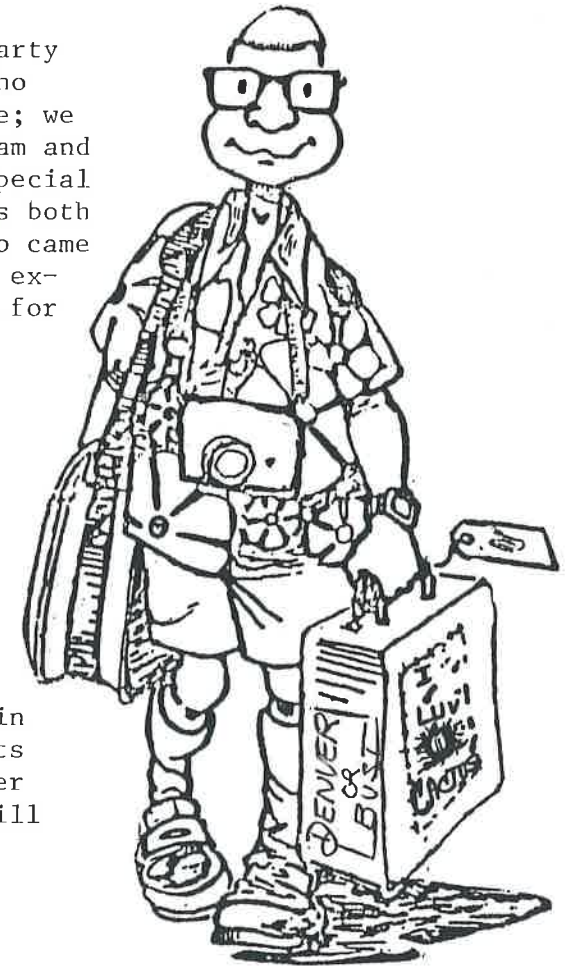
DUES ARE DUE! THIS IS YOUR LAST NEWSLETTER UNLESS YOU RENEW!

NO DUES.....NO NEWS!!!

1989 CSSA CONVENTION:

CONVENTION-BOUND? The CSSA Convention in Denver is coming up in June. Many events are planned. Enclosed in this newsletter is the convention schedule. Note you will save money if you join CSSA.

Conventioneer drawing is by Stan Oleson from his Bromelympics Bulletins.



LBCC



MEMBERSHIP: Marge Snyder has moved, and Jim Hanna has kindly agreed to add membership to his treasury duties. Let him know if any errors occurred as a result of the transfer of records after Marge's move to Sun City. THANK YOU MARGE FOR ALL THE PAST WORK, & THANK YOU JIM FOR TAKING THIS ON!

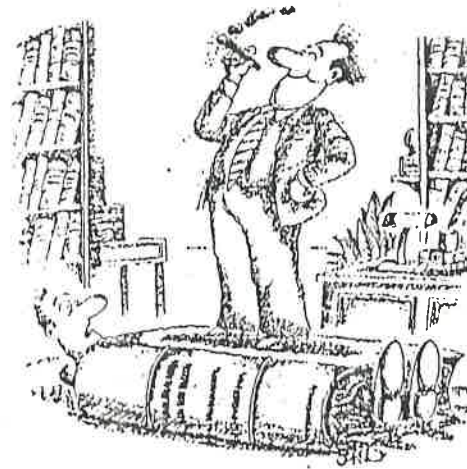
**YOUR MEMBERSHIP EXPIRING?
PLEASE CHECK YOUR ADDRESS LABEL!**

PLEASE RETURN ANY OUTSTANDING BOOKS!

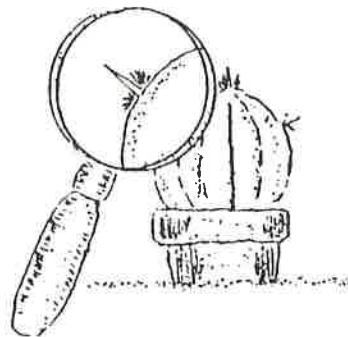
IT'S INVENTORY TIME, so there will be no checking books out until February.

ALSO PLEASE REMEMBER THAT IF YOU HAVE BOOKS YOU NO LONGER NEED OR WANT, YOU CAN DONATE THEM TO THE CLUB. Those we don't resell to members, we give to the Library to help pay our "rent."

Several months ago we suggested everyone fill in the caption on the accompanying drawing. One person did! Visitor Sarmis Luters!



"OK, OK, YOU WIN... SCHWARTZ'S EUPHORBIA JOURNAL V IS THE BEST!"



WE NEED A PUBLICITY PERSON!!!!

AND WE NEED A REFRESHMENTS CHAIRPERSON OR PERSONS!

SEE PRESIDENT ROWENA THOMPSON OR VP KATHI REYES!

} Help

LILLIAN TRUE WON THE HOLIDAY DECORATED PLANT CONTEST AT THE PARTY!

LILLIAN IS OUR AFFILIATE REP.



LOST AND FOUND DEPARTMENT:

The holiday party was such a success that people could think of nothing else! They couldn't remember lots of things! The following items were left at Audrey & Darryl's:

an umbrella...eye glasses...a brown bath towel (!?)...a spoon & fork... and a sheet pan. But no false teeth, Audrey says!



BUGGED BY BUGS?

FORGOTTEN TO RENEW?

THEN COME SUN. THE 22nd TO THE JAN. MEETING!!!

FROM YOUR SHOW CHAIRMAN LARRY GRAMMER, after receiving his Inter-City Show Honorary Plaque, given as a thank you to Larry & his Co-Chairmen Fred Hutflesz & Woody Minnich for all their hard work and leadership.

I wasn't expecting this honor, and in any event, I'm not a public speaker! But when I received the plaque at the holiday party, I would have liked to have said that working with a team like Woody & Fred made the job I had very easy, especially with the team support of the Long Beach Cactus Club.

I'm not sure I deserved the award. Maybe everyone deserved it, not just me. I'll use the example of the football coach. He's only as good as his team is!

The success of our show boggles my mind! We had something like 65 exhibitors! In fact, the numbers on this show were astronomical. I'm really excited about the next show. The momentum is already under-way.

What really got me going was seeing the new T-shirt logo. The logo is new for this year -- it's a beautiful Hoodia logo, and Woody has already made his prototypes. He's ready to make a bunch, so our Club must decide how many we'll order.

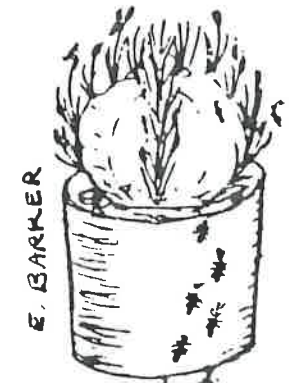
The '89 Show is being planned and it's exciting. I hope everyone who can will join in and be part of it!

LILLIAN TRUE ANSWERS THE COMPLEAT ROADRUNNER QUESTIONNAIRE:

Lillian was hooked in 1965 when she & Otis moved to California. "I saw plants I had never seen before and I wanted one of each!" Lillian likes "anything that looks like a little old tree, and a few Sansevieria!" Leuchtenbergia principis is her favorite cactus -- it's "the only one I have." The most difficult plant for her to grow is Lithops, as she has no proper place to grow them. As for what plants she would like to have, she writes, "I'm trying to cut down, but I want anything I don't have. This creates a problem."

Lillian describes her growing space as good, & herself as a "haphazard" grower! As for the ugliest succulent, she "can't think of one!" If she could have but one cactus on a desert island, it would be a spineless Opuntia. As for the succulent, it would be "anything I could eat." Her desert island book would be Jacobsen's Handbook.

What would she be doing if she were not a succulentophile? "Heaven only knows." "It's (the hobby) habit-forming. Everytime I get rid of one, I find two." Her final comment - philosophy as a grower? "I like living things!"



PRE-EDITORIAL: The editorial below was written mid-December, so is technically the End-of-the-Year Editorial.

EDITORIAL

The 1988 Inter-City Show was possibly the best cactus show in memory, and people noticed. Inevitably, perhaps, a few persons were concerned that the Inter-City Show was bigger than the CSSA (Cactus & Succulent Society of America) Show, and that this somehow was wrong. At least this was what was reported to this editor, as well as the feeling that those who worked so hard to make the Inter-City Show so good should do the same or more for CSSA because it is the National Show.

This editorial respectfully disagrees.

First, it's important to note that one show's being considered "better" does not mean that that show was "competing" against others. Show-goers will naturally make comparisons; and constructive comparisons can be highly educational.

Instead of worrying about the success of the Inter-City Show, it is to be hoped that those wishing to improve the CSSA Show will spend their energy in a positive way to make the CSSA show itself better instead of spending that energy in negative criticism of those putting on other shows. But improving the CSSA Show will mean communicating and working over many months with a number of people involved. One person CANNOT do it alone!

Expecting everyone who helped create the Inter-City Show to do as much or more for the CSSA Show is unfair and likely impossible for most. Show people are all volunteers with a finite amount of time and strength. Also, a volunteer has the right to put his greatest energies into what he or she can help create best -- especially if there are philosophical differences involved. People will likely work hardest for what they believe in -- and for their own vision of how things should be.

And there are differences between the two shows -- differences which handicap the CSSA Show and make it difficult to reach potential. The most obvious difference is the collected plant show rule which eliminates many of the finest and most interesting and well-grown specimens. But more importantly perhaps, is the philosophical emphasis set by CSSA. The CSSA Show wishes to present the best in competition (excepting any collected plants) so it has only one class, or level of competition.

The Inter-City Show, on the other hand has three classes, and the beginners' class is considered so important that it has its own set of judges. Also, the Inter-City Show seeks to reward in various ways its own workers and participants. That the show is a volunteer activity -- and that it should be fun -- is never forgotten. Yes, the show is meant to educate and inspire and make better growers of us all. Yes, it is meant to make money so the participating clubs can continue another year, and yes, the show & sale is meant to provide a way for the potential cactophile to acquire fine plants. But it's never forgotten that we all, no matter how dedicated to the cause, need to get something back from the show, whether intangible rewards, whether gifts and certificates at the awards dinner, or whether opportunities for comradeship to flourish.

To summarize, then, those wishing to improve the CSSA show should concentrate on strengthening the show from within. They could become active in setting policy and then help do the actual work to create the success, or "magic," they want. The positive stating of goals and the pooling of time and talents of those who are most eager to improve the CSSA show are the most likely ingredients to working magic. Rather than griping that another show is better, the complainers need to roll up their sleeves, join current CSSA show workers, and find the right formula to create their own magic!

Carol Anne Wujcik, editor

POST-EDITORIAL NOTE: If you disagree or agree, write it down and send it to the editor!

NOTE: The opinions expressed in this editorial are those of the writer and may not be those of LBCC or its membership.

CREDITS:

(Not credited elsewhere):

The ants-in-our-plants drawing by Eleanor is from an Aug. 1980 Long Beach Cactus Club newsletter. The "Have you hugged your cactus today" drawing is from the Aug. 1988 South Florida C & S Society Newsletter. The cactus & magnifier is from an old San Diego Newsletter with Walter Scott the illustrator. The Astrophytum is from an 1890's book. Other drawings are of uncertain origin.

EDITOR: Carol Wujcik, 10860 El Mar Ave., Fountain Valley, CA 92708.

SAD NEWS: Stu Cramer of Florida died recently. He will be missed.

CSSA POLLEN DIRECTORY

Randy McRobbie

One way to insure propagation of rare and endangered species of cactus and succulent plants is through distribution of seeds. The CSSA SEED DEPOT has made many new and unusual species available to the novice and experienced grower.

Often the production of seeds is hampered because the grower has only one clone of a particular rare species that is not self-compatible which makes seed production impossible. Or, perhaps, a few clones are on hand, but do not flower at the same time.

As an additional service allied with the Seed Depot, we are offering a POLLEN DIRECTORY. Those people having rare and unusual cacti and succulents are invited to submit their names, addresses, and telephone numbers with a list of such plants in their collections. Subscribers will then receive a listing of other growers having the same plants along with some ideas on harvesting, storing, and shipping pollen. There is no charge for this service.

The privacy of each individual's inventory submissions will be STRICTLY GUARDED. Only Peg Spaete and myself, Randy McRobbie, will have complete listings, and THESE WILL NOT BE RELEASED UNDER ANY CIRCUMSTANCES. REQUESTS FOR POLLEN SOURCES WILL BE GRANTED ONLY TO SUBSCRIBERS WHO HAVE ALSO REGISTERED THE SAME PLANTS WITH THE DEPOT.

The success of this project in conjunction with the CSSA Seed Depot will greatly enhance the distribution of rare, endangered, and unusual species and promote the preservation of our natural heritage.

Submissions should be made to:

Randy McRobbie
114 NE Conifer #15
Corvallis, OR 97330
503-754-1193

Peg Spaete
27821 SE Sun Ray Drive
Boring, OR 97009
503-663-3946

CSSACSSACSSACSSACSSA

The 1989 CSSA SEED DEPOT list will be ready February 1. For a free list, please send a large size, self-addressed, stamped envelope to Peg Spaete, 27821 SE Sun Ray Drive, Boring, OR 97009. Foreign requests, 2 IRC's, please.

PLANT OF THE MONTH:

For the cacti, we will be bringing ceroid types -- the miniature Saguaros and tiny Organ Pipe Cacti we grow to add height to the collection and to counterpoint our little rotund cactoids! Some are truly miniature, one even named Pygmaecereus, though the name has been changed to Arthrocareus. Many popular species are Haageocereus, Borzicactus, Cleistocactus, Oreocereus, Cephalocereus, Stenocereus, and many others. Many of the names of these plants have changed, but the plants themselves are wonderful for form and spination. Some even flower when relatively small, & some are night bloomers.

For the succulent, we will bring the highly popular Gasteria, Haworthia & miniature Aloe. These plants can be successfully grown on sunny windowsills. All are leaf succulents, all flower when small, though most Haworthia blossoms are not showy. Among the Haworthia especially, there is wonderful variety of form + even window leaves.

Cartoon is by Dan Leavitt for THE POINT, newsletter of the Cascade C & S Soc., Seattle, Nov. 1988, Ted Van Velzen, editor. With permission.

Drawings of mealie & spider mite are also from this publication: Mar. & April, '88.



"WE'RE ALL READY FOR TRANSPLANTING DEAR"

NOTICE Pot Sale Auction

SPECIAL FEBRUARY MEETING: February 26, 1989
 1:00 PM at the Iacoboni Library, 5020 Clark Ave.
 in Lakewood. (Opposite the Mall - lots of parking).

POTTERY FESTIVAL

Featuring pots & planters and the men & women
 who create them from raw clay! Come meet the
 potters who know how to satisfy your most un-
 usual succulent's housing needs!

JUST IN TIME FOR THE SPRING POTTING FRENZY!

Also, short program by potter Joe Wujcik.

SPECIAL AUCTION! POTTERY SALES!

THE POTTERS WHO WILL HAVE POTS FOR SALE
 AND AUCTION INCLUDE: Sharon Risley, Lillian
 True, Erika van Auker, and Joe Wujcik.

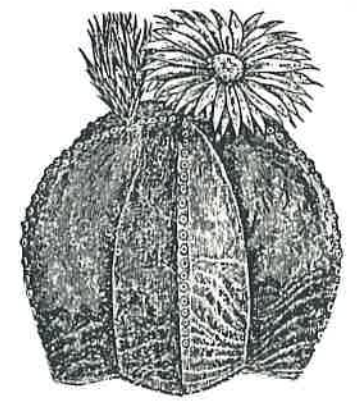
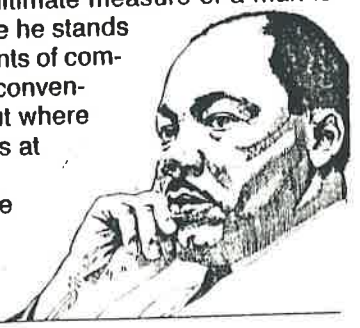


MEMBERS OF ALL CACTUS SOCIETIES WELCOME!

Martin Luther King Jr.'s Birthday

Dr. King:

"The ultimate measure of a man is
 not where he stands
 in moments of com-
 fort and conven-
 ience, but where
 he stands at
 times of
 challenge
 and
 contro-
 versy."



ZOO PLANT SALE!

APRIL 15 & 16

**ALL KINDS OF
 PLANTS INCLUDING**

**CACTUS & OTHER
 SUCCULENTS**

**MORE INFORMATION
 TO COME!**

**MARK YOUR
 CALENDARS!**

1989 EVENTS

April 7, 8, & 9 - SOUTH COAST CACTUS & SUCCULENT SOCIETY SHOW. New
 month this year so as not to conflict with the CSSA
 Convention. (Set-up is the 7th).

April 29 & 30!
~~May 5 & 7~~

Probable date of Sunset Show & Sale in Culver City.

May 19, 20, & 21 - Fiesta de Flores at South Coast Botanic Gardens.

May 21 - Huntington Plant Sale, featuring 2 different groups of
 plants: Xerophytes (including C & S) & Edible Plants.

May 27 & 28 - The Orange County Show & Sale at the Yorba Linda
 Library.

May 27 & 28 - The Gates C & S Soc. Show & Sale in Redlands
 (Riverside).

June 12-16 - CSSA Convention in Denver hosted by the Colorado C & S
 Soc. to be held at the Executive Tower Inn in downtown
 Denver. It's time to start making plans.

July ?? (Usually Fourth of July weekend) - CSSA SHOW & SALE at the
 LA Arboretum, Arcadia.

August 19 & 20 - INTER-CITY Show & Sale at the LA Arboretum in
 Arcadia. This is an open show, hosted by the Long
 Beach Cactus Club, the San Gabriel C & S Soc. & the LA
 C & S Soc.

September 16 - Sixth Huntington Symposium, featuring Asclepiads &
 Caudiciform succulents.

NOTE: Not all dates are certain. Please watch for more info.

OTHER EVENTS:

Feb. 24-26 -- The International Symposium on Bulbous and Cormous
 Plants, at the U. of Cal. at Irvine -- their Arbor-
 etum. For information on the event and costs, con-
 tact ISBC - UCI Arboretum, University of California,
 Irvine, Irvine, CA 92717.

March 4, Sat., 10 AM - 2 PM - UCI Arboretum will have its Spring
 OPEN HOUSE. Modest Plant Sale. Lots of blooming
 bulbs & also African succulents like Aloes.

The UCI Arboretum is on Campus just south of Jamboree. Take Jam-
 boree from the 405 & go west. Turn south on Campus & make an im-
 mediate right onto the smallish - street leading to the Arboretum.

**Coming
 Attractions**

CALENDAR

January 22, Sunday, 1 PM - Our Regular LBCC MEETING! Featuring PESTS!!! Pestilential pests and how to deal with them. Everything you always wanted to ask, you will have the chance to ask our own Eleanor Barker, Nurserywoman and Pestslayer! Also, bragging plants. plant of the month, door prizes, sales, meeting.

January 29, Sunday, LBCC BOARD MEETING. Everyone welcome.
PROBLEM: We have no location as yet. Can anyone host it?

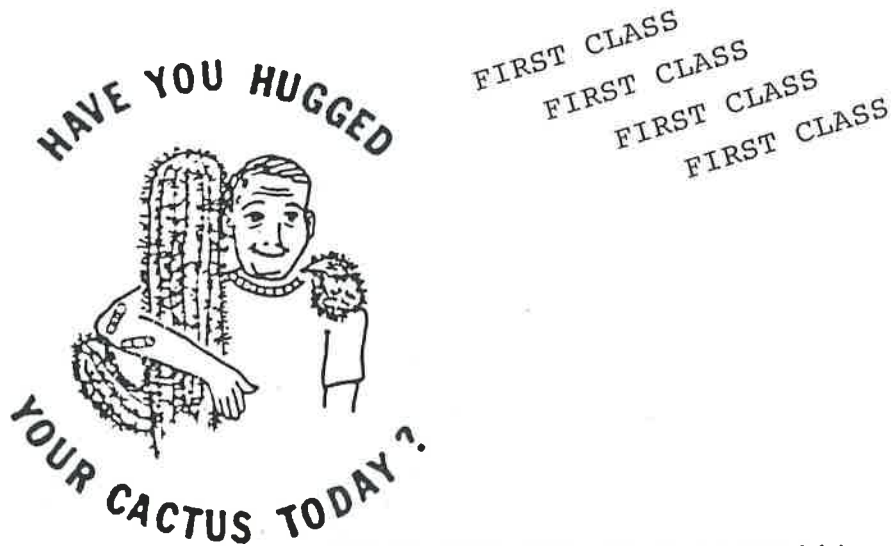
February 26, Sunday at 1:00 PM: SPECIAL POTTERY FESTIVAL FEATURING PLANT POTS FOR SALE & AUCTION PLUS PROGRAM.

MEMBERS OF ALL CACTUS CLUBS WELCOME!

INFORMATION ON THE INSIDE.

LBCC MEMBERS: There will be a red check by your mailing label if we have not received your 1989 dues! Also, if you are a past president or honorary member, you must return the form or let us know you still want to receive the newsletter, even though dues are waived. THANK YOU!

LONG BEACH CACTUS CLUB
NEWSLETTER
10860 El Mar Avenue
Fountain Valley, CA 92708



START THE NEW YEAR RIGHT!!!
PAY YOUR LBCC DUES TONIGHT!