

January 2023

ROADRUNNER NEWS

Newsletter of the Long Beach Cactus Club
Founded 1933; Affiliate of the Cactus and Succulent Society of America, Inc.



Photo by Peter Breslin

Presentation: Peter Breslin: Conservation and Cultivation: How Conservation Science Can Create Growing Success

How can better understanding of the habitats, climate conditions, geology, biogeography, and evolutionary relationships of our favorite plants help inform optimal cultivation? Breslin will explore multiple connections between contemporary and emerging research methods in plant conservation and the ways we raise our plants. Understanding climate variables, microclimate effects, geography, geology, soil, and some of the basics of plant physiology can increase growing success, even with challenging plants.

Peter started studying cacti in habitat more than 30 years ago and decided to get a Ph.D. in cactus evolution and biogeography at age 52, focused on the *Mammillaria* and *Cochemiea* of Baja California. He finished his Ph.D. at 58, at Arizona State University. He has published widely on topics in cactus evolution and ecology, including being one of the authors of *The Field Guide to Cacti and Succulents of Arizona*, published by the Tucson



Cactus and Succulent Society. He is currently conducting the sixth installment since 1964 of the long-term saguaro survey on Tumamoc Hill in Tucson, Arizona, as a postdoctoral research fellow at The Desert Lab at The University of Arizona. He is also the managing editor for CSSA publications, and edits both the *Cactus and Succulent Journal* and the annual peer-reviewed yearbook, *Haseltonia*.

message from the President

The club is going into its 90th year of existence. In its lifetime, this club has served as a hub for thousands of botanically inclined individuals in search of fellow enthusiasts that enjoy studying and growing plants. It's provided lots of things for different people. It has cultivated generations of friendships, nurtured lifelong interests in natural sciences, and briefly satiated our never ending thirst for new plants. Here's to 90 more.

The holiday party was excellent. We had a great turn out, lots of food and good vibes. Top Plant of the Month winners were awarded some great plants.

The 2022 Plant of the Year was *Hoodia gordonii*. If you are not aware, the club gifts every member a plant at the end of the year. If you didn't attend our holiday party, you'll be able to grab your *Hoodia* at our January meeting. Your membership dues help pay for these plants and the holiday party, so please make sure you're up-to-date with your membership.

Nelson Hernandez



Photo by Peter Breslin

Cactus of the Month — January 2023

Gymnocalycium

Gymnocalycium, commonly called chin cactus, is a genus of about 70 South American species of cactus. The genus name Gymnocalycium (from Greek, "naked calyx") refers to the flower buds bearing no hair or spines.

Their main area of distribution is Argentina, part of Uruguay, Paraguay, southern Bolivia and part of Brazil. Most species are rather small varying from 1.5 to 6 inches in size. In cultivation they are popular for their easy flowering habits, and the flowers are generally brightly coloured. They are a very popular genus for cultivated traits.



GYMNOCALYCIUM SPEGAZZINII
IN HABITAT
(ARGENTINA, SALTA PROVINCE)



GYMNOCALYCIUM MIHANOVICHII
CV. HIBOTAN



GYMNOCALYCIUM SPEGAZZINII
VAR. UNGUISPINUM

Succulent of the Month — January 2023

Crassula

Crassula is a genus of succulent plants containing about 200 accepted species, including the popular jade plant (*Crassula ovata*). They are members of the stonecrop family (*Crassulaceae*) and are native to many parts of the globe, but cultivated varieties originate almost exclusively from species from the Eastern Cape of South Africa.

Crassulas are usually propagated by stem or leaf cuttings. Most cultivated forms will tolerate some small degree of frost, but extremes of cold or heat will cause them to lose foliage and die.



CRASSULA COLUMNARIS



CRASSULA COLUMELLA



**CRASSULA PYRAMIDALLIS
IN HABITAT
(WORCESTER, WESTERN CAPE)**



**CRASSULA DECEPTOR
(NATIVE TO SOUTH AFRICA
AND NAMIBIA)**

Plant of the Year Hoodia gordonii

Hoodia gordonii is a leafless spiny succulent that grows naturally in Botswana, South Africa and Namibia. The flowers smell like rotten meat and are pollinated mainly by flies. The species became internationally known and threatened by collectors, after a marketing campaign falsely claimed that it was an appetite suppressant for weight loss.



Hoodia gordonii is prone to root rot due to overwaterings and lack of fresh air.

Exposure: Brightest light, provide shade and acclimate to full sun positions.

Watering: Water normally in the growing season, sparsely in the winter.

Hardiness: It is usually recommended to over-winter them in warm conditions (at 50° F), but despite their African origins they seem to grow well and flower without the extra heat.

Spring: In the spring leaving them out in the rain may provide them with the water they need.

Summer: In the summer months they will grow well in full sun or partial shade and tolerate heavy rain, but will be just as happy if the season is dry.

Potting medium: Since roots are quite shallow, a gritty, very free-draining compost with extra perlite or pumice, clay pots help the plants to dry out between watering.

LBCC PLANT-OF-THE-MONTHS RULES

At the April, 2003 meeting, the following rules were adopted for the Plant-of-the-Month (POM) competition:

- A maximum of three plants may be entered in each category (cactus and succulent).
- There will be three classes for entrants: advanced (blue tag), intermediate (pink tag) and beginner (yellow tag).
- Advanced and intermediate entrants must have had the plant in their possession for at least six months, beginners for three months.
- Entrants will receive 8 points for first place, 6 points for second place, 4 points for third place, 2 points for show/honorable mention (HM) and 1 point for showing a plant that does not place.
- At the discretion of the judges there may be up to three third places in a category. If plants are not deemed to be of sufficient quality, no third place will be awarded.
- For an entrant to receive points, the entry tags must be collected by the person in charge of record keeping for POM.
- At the annual Christmas party, award plants will be presented to the ten highest cumulative point holders regardless of class.

Long Beach Cactus Club 2023 Plants of the Months

<u>MONTH</u>	<u>CACTI</u>	<u>SUCCULENTS</u>
January	Gymnocalycium	Crassula
February	Melocactus/Discocactus	Kalachoe
March	Ariocarpus	African Euphorbia
April	Mammillaria with straight spines	Agave
May	CLUB SALE	
June	Copiapoa	Sansevieria
July	Crests/Monstrose	Crests/Monstrose
August	Columnar Cereus	Adromischus
September	AUCTION	
October	Lobivia/Echinopsis	Pelargonium/Sarcocaulon
November	Miniatures (3) - pots under 3"	Miniatures (3) - pots under 3"
December	HOLIDAY PARTY	

SNACK AND REFRESHMENT SCHEDULE

<u>MONTH</u>	<u>LAST NAME STARTS WITH</u>
January	A, B
February	C, D
March	E, F, G
April	H
May	I, J, K
June	L, M
July	N, O
August	P, Q, R
September	Auction
October	S, T, U, V
November	W, X, Y, Z
December	Holiday Party



ARTIFICIAL INTELLIGENCE

AI Art refers to any work of art created with the assistance of a system based on artificial intelligence. It's been around for years, but has recently become available to us plebeians.

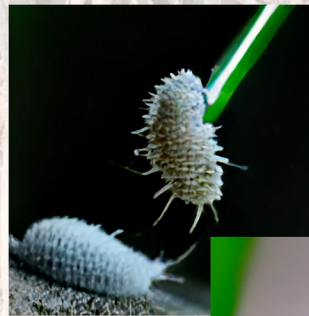
The program I used, www.craiyon.com, creates images using text base prompts (ex. "A cactus driving a 1997 Ford Ranger"). Here are a few of my inputs:



A roadrunner in the style of Jean-Michel Basquiat



Mike Tyson's favorite cactus



Luke Skywalker fighting a mealybug





The Long Beach Cactus Club

Est. 1933

Meeting Highlights:

- Monthly programs led by plant experts from around the world
- Mini shows each month with different categories of cacti & succulents
- Vendors selling plants, pots, tools, and more
- Monthly raffles
- Advice from members for plant identification and care

Meeting Information:

1st Sunday of each month

1:00 pm

Woman's Club of Bellflower 9402 Oak St, Bellflower, CA

Member Sign Up

\$20.00 per year, per membership

\$10.00 for engraved name badge (optional)

☐ Cash or ☐ Check - Made out to the Long Beach Cactus Club

Membership year: _____ Amount paid: _____

Name: _____

Email: _____

Address (for mailing purposes): _____

Phone number: _____



WHAT YOUR DUES DO:

Your membership dues pay the club operating expenses that include, but are not limited to:

RENT - GUEST SPEAKERS
WEBSITE HOSTING - EMAIL & MEETING SOFTWARE
PRESENTATION EQUIPMENT- REFRESHMENTS - PLANT OF THE YEAR
DOOR GIFTS - BIRTHDAY PLANTS - HOLIDAY PARTY

Above "Ransom Note" is by Stan Oleson, found in South Bay Brom. Associates newsletter "The Inflorescence," 1986

LBCC OFFICERS AND BOARD MEMBERS FOR 2023

PRESIDENT	Nelson Hernandez	SECRETARY	Kelly Eddy
VICE-PRESIDENT	William Ramirez	TREASURER	Henry Angulo
BOARD OF DIRECTORS	Scott Bunell, Ed Hansen, Daniel Almanza, Lemono Lott, Christopher Bucka		
CSSA LIAISON	M. A. Bjarkman	NEWSLETTER	Andrew Lander
VENDORS/PRIZES	Jim Hanna	PROGRAMS	James Lemos
MEMBERSHIP	Tanisha Herr	HISTORIAN	Ken Shaw
INTER-CITY SHOW	Henry Angulo & Scott Bunell	MINI-SHOW	Christopher Bucka
LIBRARIAN	Lisa Weller	X-MAS PARTY	Gary Duke
PHOTOGRAPHER	Alon Ronn	REFRESHMENTS	Amy Angulo
PLANT SALE	Kelly Eddy	AUCTION	Gretchen Lewotsky
INSTAGRAM	OPEN	WEBSITE	Scott Bunnell

NEWSLETTER

IF YOU HAVE ANY STORIES, cultivation tips, information about upcoming events, photos, corrections, or news in general about cacti and succulents that might interest our members, **please send them in**. **Comments and suggestions are always welcome. Remember, this is your newsletter.** Physical address: Andrew Lander, 3041 Roxanne Ave., Long Beach, CA 90808. Cyber address: landruc@gmail.com



Photo by Peter Breslin