

The Cactophile

- 1) STANDS OUT IN A CROWD!
- 2) IS UNIQUE, AND DIFFERENT FROM THE REST!
- 3) STANDS HEAD & SPINES ABOVE ALL OTHERS!



LONG BEACH
CACTUS CLUB

JANUARY
1988

CACTUS COMPANION

JANUARY MEETING: THIS SUNDAY, JAN. 24 at 1:00 PM
FEATURING: KEI NAKAI on DUDLEYAS!

AND BOARD MEETING: JANUARY 31, Sunday at 1:00 PM at
the home of Terry & Clem Goewert.

For the above cartoon, thanks & apologies to an ad for The Arizona Republic/The Phoenix Gazette - which together rank third in household coverage in the U.S. - based on the 20 largest metro areas!

1988 OFFICERS

President - Rowena Thompson (213) 835-0393
Vice Pres. - Kathi Reyes (213) 591-7330
Secretary - Terry Goewert (714) 962-3839
Treasurer - Jim Hanna (213) 920-3046

DUES ARE DUE: Regular membership is \$8, senior membership is \$5, and each associate (same home) membership is \$1.50 regardless of age. Please contact your membership chairmen: Marge Snyder, 19009-308 Laurel Park Rd., Dominguez Hills, CA 90220 or Terry Dew, 5328 Carita, Long Beach, CA 90808. THANK YOU TO ALL WHO HAVE ALREADY RENEWED!

THANK YOU TO ALL THE COMMITTEE CHAIRMEN WHO WILL SERVE THIS YEAR! AND TO ALL OTHERS WHOSE HELP IS SO VITAL. There are a few changes; Audrey Tucker will continue to be our program chair. but she requested a good soul be plant of the month chair. That good soul is Bill Hagblom. Bill is also bragging plants and field trip chair. Rose Wey will handle birthday and door prize plants, while Kathi will be refreshments chair. schedule permitting. WE HAVE MANY HARD WORKERS. THANKS TO ALL!!!!!!!

NEWSLETTER EDITOR: Carol Wujcik, 10860 El Mar Avenue, Fountain Valley, CA 92708, (714) 963-3146. Corrections, contributions etc. are always welcome. If all you have time for is something short, like a culture tip, that's fine! In fact, the best lectures, the best class talks, the best sermons, are usually the short ones! And they're often the easiest to remember.

FROM THE EDITOR:

First come the apologies which must accompany any newsletter which attempts to reproduce color photos - or any photos for that matter. Even the best copiers with controls for photos may do a poor job, especially with photos taken in bright sunlight. And what you see are the photos which copy relatively well. Many did not, so the choice of which photos I use depends on technicalities such as these. Nor do I know as I type this, how well what seemed ok when tested will do when sent through the final run, with another operator, another day's toner, or even another machine. Hence the disclaimer!

Regrets for the quality of type in this newsletter. It's not your eyes. By the next newsletter, there should be a new ribbon, the most probable cause of the problem. Carol



January 1988



MEETING DATE: SUNDAY JANUARY 24, 1988 AT 1:00 PM

LOCATION: Iacoboni Library Community Room, 5020 Clark Ave. Lakewood, Opposite Lakewood Mall, Lots of Parking.

PROGRAM: DUDLEYAS!

Kei Nakai of Hawthorne Nursery will tell us about these relatives of the Echeverias. Many of course are native to our California coast, including the general LA coastline, even inland. You can see Dudleyas in Joshua Tree Nat'l Monument, & in Arizona.

REFRESHMENTS: EVERYBODY! Whoever can, please bring finger foods. THANK YOU! We go on faith.

PLANTS OF THE MONTH: SUCCULENT: DUDLEYA! What else?

CACTUS: NEOCHILENIA (now transferred to the genus Neoporteria).

Some Neochilenia species: N. chilensis, N. hankeana, N. ritteri, N. napina, N. reichei, N. rupicola

ALSO: BRAGGING TABLE, DOOR PRIZE, SALES, END-OF-MEETING PRIZES, MEETING...

AND

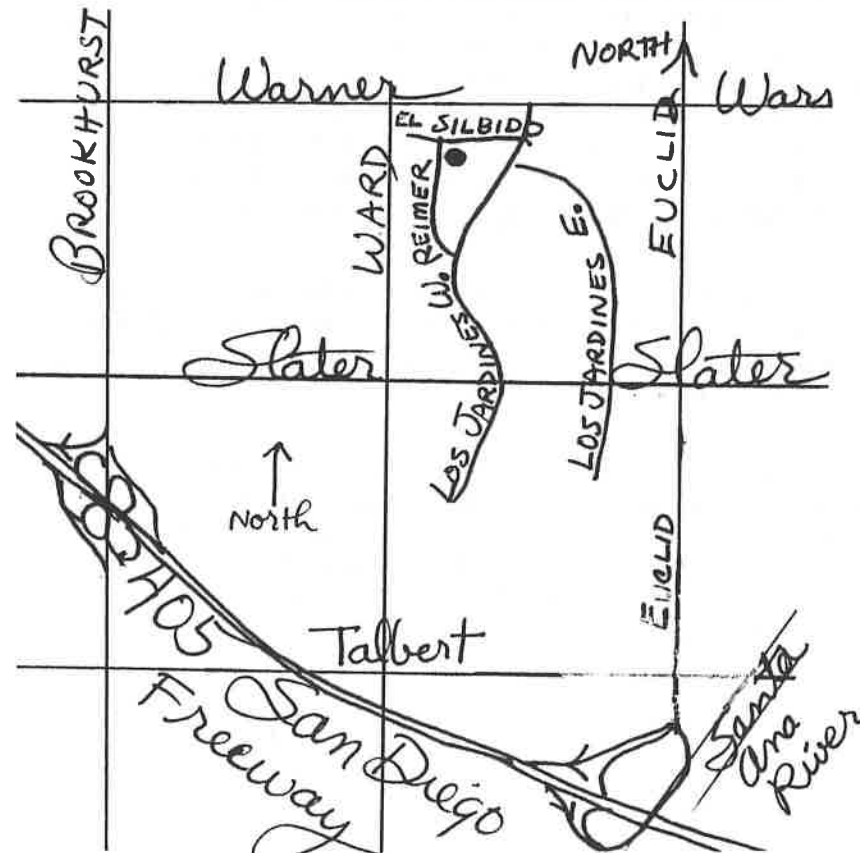
BOARD MEETING: SUNDAY JANUARY 31, 1988

LOTS TO DISCUSS, INCL. THE SHOW, THE AUCTION, SPECIAL FIELD TRIPS, RAFFLES, OUR GARDEN, LOTS MORE, PLUS, GENERALLY, WHITHER THE CLUB?! EVERYONE IS INVITED.

THANKS TO OUR HOSTS:

Terry & Clem Goewert, 17142 Reimer St., Fountain Valley, CA 92708, (714) 962-3839.

BRING: Yourselves, ideas, finger foods, and if you have an extra chair bring it in case!



PATSY WADE HAS WRITTEN FOR THESE PAGES BEFORE HER HOME IN PACIFIC PALISADES IS ONLY A BLOCK FROM THE CLIFFS ABOVE THE OCEAN. DURING THIS TIME OF COLD AND DAMP WEATHER, IT IS GOOD TO REMEMBER THE WARM SUN...LET YOURSELF GO, AND REMEMBER...

NOVEMBER

"We are now having a lot of cold rain. We need the rain badly. This is early to be so cold and wet. It's hard to remember that just last month we were having a record-breaking heat wave. There is one day I remember...

"October 2, 1987 - It's hot. The radio said 104° in Long Beach. I don't know what it is here, but it's hot. I go outside to see if I can work on plants. It's too hot to repot any bonsai trees, but maybe I can work on succulents or pull weeds. I walk around the yard. It's just too hot. I decide to go see the ocean; I like to go and feel the weather there.

"There's no protection from the sun here by the ocean, but somehow it feels good. I stop and feel the heat and the sun, stop and go limp - feel the weight of the sun and heat on me - no thinking of 'shoulds' or 'ought to,' just be and feel. I turn to get the most shade from my hat, and still I feel the sting of heat on my face. No one else is out. Everyone is hiding from the heat. It's so quiet - no lizards rustle in the brush, no bird calls, no people move about. It's so quiet I hear the sound of the ocean clearly. I feel the sweat start to roll down my back. Sometimes the birds fly, but only to go from here to there, not flying to play with the wind. I think about going back, but not yet; it feels too good to leave.

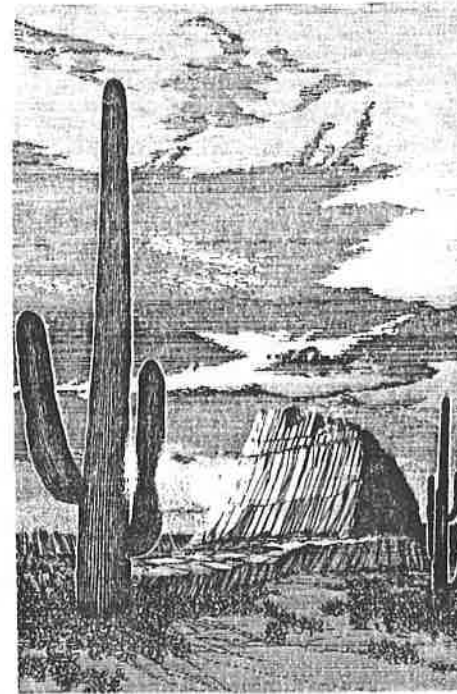
"There is a path of sunlit diamonds in front of me - intensely bright four-pointed stars that sparkle and dance with the motion of the ocean. I watch them, entranced by their brightness and clarity...each individual diamond so sharp and clear. I have never seen the ocean like this before.

"And then in the midst of the weight of the heat, a puff of air, a slight touch of breeze. The ocean breeze is beginning to start. I feel it all around my sweating body and glory in its touch. It stops and it's quiet and hot again. Now it comes back, a little stronger this time. Then hot again. I wait for the breeze, feeling its soft touch easing the weight of the heat.

"Time to start home. I stop under the first tree. Ahh, it feels good, cool and soft under the tree. It feels so good I stay, again waiting for the little breeze, to feel its touch cooling my hot and wet body.

"This day I remember."

Patsy



ALL-TERRAIN VEHICLES AND THE DESERT

- Joe Wujcik

This past week, the Justice Department, the Consumer Product Safety Commission, and the ATV Manufacturers agreed to stop all sales of 3-wheel ATV's in the U.S. after Jan. 6. These motorized tricycles not only do incalculable damage to the fragile desert with their balloon tires but also have been proven to be dangerous to their riders. (The Orange County Register reports almost 200 deaths and over 80,000 "reported" injuries in the U.S. annually).

The Sierra Club concludes that this agreement will not affect the controversy over the use of these vehicles in the desert. The agreement does not impact either the 2.3 million ATV's now in use, nor the estimated 450,000 four-wheel ATV's that will be sold in the U.S. during 1988.

As concerned friends of the desert, we should:

1. Urge that the training which manufacturers agreed to give to existing owners of ATV's include respect for the environment, and
2. Support the proposed Mojave National Park, which will close some endangered areas to these vehicles.

Joe

Editor's note: Do you all know about the proposed Mojave National Park? There will be a push this year to make it a reality. It would be a good idea to educate ourselves so we can voice opinions. But the only way to reach an intelligent opinion is to learn about the proposal. If you have saved your newsletters, the March 1986 newsletter contains a reprint of the LA Times editorial on the subject. Watch for other information in the media. And if you would like to voice your opinion in this newsletter, write!

DID YOU KNOW that pumice is glass? That perlite is popped glass? That glass is a supercool liquid? That stone-washed jeans are actually "pummeled with pumice"? Which makes stone-washed jeans supercool?

For the above info., thanks to Joe Clements & the Mid-Iowa C & S Soc. N.I.!

The ADOBE GARDEN NEEDS YOU!



DISASTER AT THE ADOBE GARDEN

Just when Curator Ted et. al. thought the Garden safe from the ravages of Huxtable the Horrible, two new disasters befell the Garden. First the fierce wind last month felled our finest Parkinsonia. There's still a chance it may resprout from what little remains of the trunk.

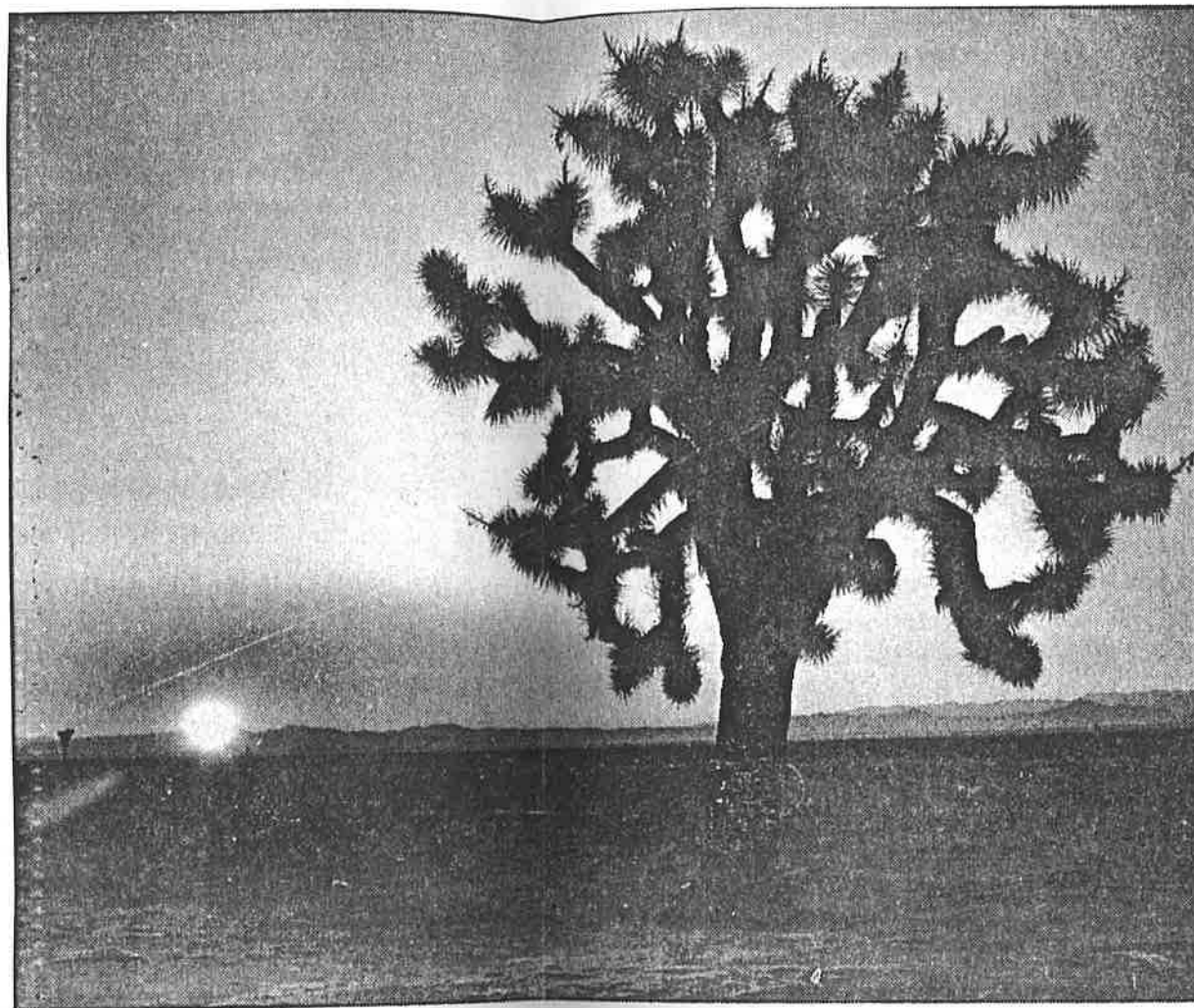
Second, after recuperating several months from his recent surgery, Ted returned last week to the Garden to discover a large ditch had been made through paths and beds - with many plants dug up or harmed. Plus our watering system had been destroyed in one place. Seems a main water line will be going in. Ted raised hue and cry, and the next day a work crew awaited his orders for eventual restoration. Ted will keep a close watch!

Meanwhile the rest of the Garden looks good - and weedless! Since Bill hasn't been able to get to the Garden recently because of his work schedule, Ted suspects that the elusive Ed Hennessey has been dispatching the Spurge, Scourge of the West!

LIBRARY NEWS: We have some new books! EUPHORBIA IV, CACTI FOR THE CONOISSEUR, SEDUMS, PLANT JEWELS OF THE HIGH COUNTRY, DINT'ERIA JOURNAL, SANSEVIERIA BULLETIN (Mo.).

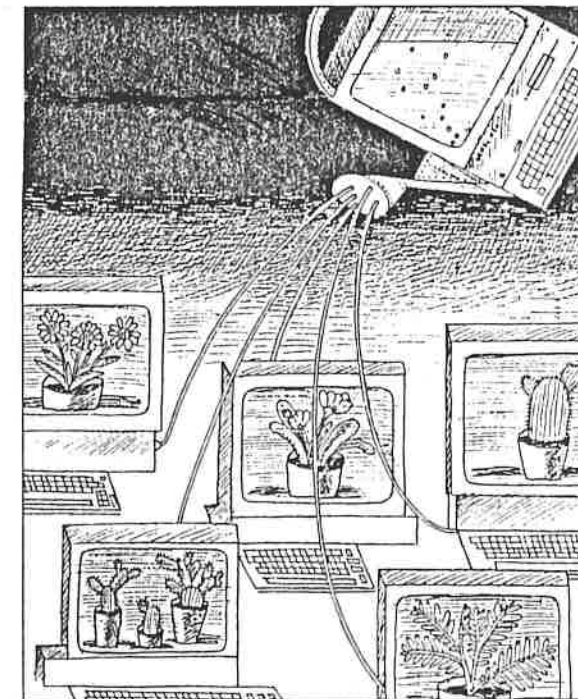
NEWS FROM, FOR, & ABOUT ROADRUNNERS!

DUES are DUE

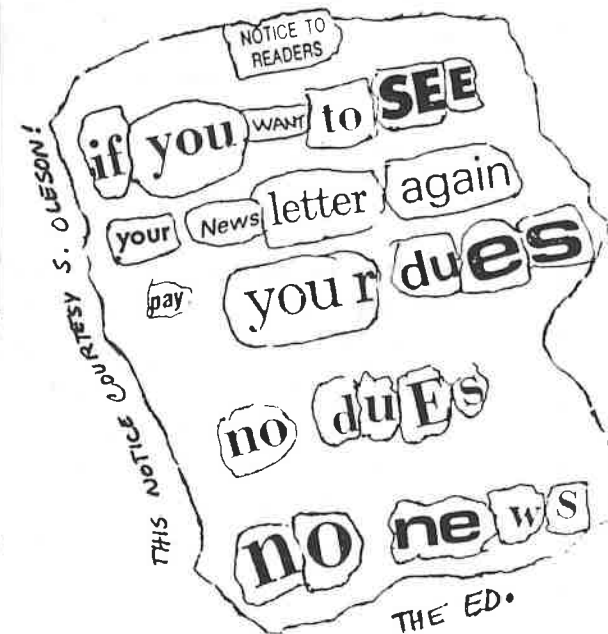


Desert scenery—A giant cactus is silhouetted by sun rising behind mountains near Boron.

Take a close look at the caption above. Thanks go to Jim Hanna for finding this photo of a Joshua Tree in the L.A. TIMES and for pointing out that even the TIMES will call any xerophyte or succulent "a cactus!" But the Joshua Tree is no cactus. It's a Yucca - unrelated to the cactus family. QUESTION: Is the Joshua Tree a succulent? For sure it's a xerophyte (dry grower) but is it also a succulent?



The above cartoon is from the July '87 PERSONAL COMPUTING, and was sent to us from that computer whiz kid herself, Marge Snyder!!



THOSE OF US WHO COMPLAIN ABOUT THE COLD AND DAMP AND WIND WHICH FALL AND WINTER CAN BRING, SHOULD KEEP IN MIND THAT IT COULD BE WORSE! The following, from the Dec. 1987 CACTUS DIGEST, St. Louis, Betty Cordes, Editor, brings back memories for me from the days I raised cacti in Ohio - 8 mos. under lights in winter, with extension cords running from many outlets! Carol

THE TRIALS AND TRIBULATIONS OF A CACTOPHILE! by Jeanne Philipp

Oh my heavens - where did the summer go? A dirty house, no tables set up and a yard full of Cacti and succulents. Well I don't know about the rest of you, but I never do things the easy way. The windows have to be washed, (my babies have to see out) curtains hung, then the house one room at a time. At this writing, I've still got three more windows to go but none of these monsters, they are not babies any more, go in these two rooms so it doesn't matter.

Well, I made arrangements with my sister, my daughter and my son-in-law to help me and in one days time they were all in. "ALL 563 OF THEM." From 1 1/2" pots all the way up to 18" pots and most of them are clay. Now the fun begins, "Where am I going with all of them?" All the solutions I have are immediately vetoed. Shelves over the windows? - Can't see out; Floor stands? - The baby will get into them; Hanging Shelves? - The ceiling will cave in. So I had to settle for window sills in the dining room and the kitchen; and whether some are favorites or not they will have to go down in the basement.

The best part of it all is "How do you walk in the basement when you can't see the floor for the plants?" Being a true Cacti lover, I thought it smart years ago to have only large plants and the bigger they were the less you had to move. But my large ones seem to grow & grow & GROW. Every spring I say I'm going to keep a pup and get rid of the parent plant but it never seems to turn out that way. So every year out they go, and back in in the fall. But, one of these days _____.

Well, I got the tables set up and plugged in the lights and BAM!!! I blew a fuse. Knowing women, no one tells us you have to keep fuses on hand just in case. So out I go to get them, come back to find I can't use my lights because the lines are over loaded and it will keep on blowing the fuse. A call to the electrician (my son) "Sorry Mom, I'll get to it this week end. So after 4 days he came over to put in a new circuit panel and more lines. By now, I can hear "my babies" (the name has changed again) crying because they are afraid of the dark. So before he got the panel in I ran an extension cord (heavy duty) from upstairs in the kitchen, through the hall and down to the basement so they can have a little light. What with plugging in the freezer 10 hours, washer 1 hour, dryer 1 hour, refrigerator 3 hours, fish pump 2 hours and plant lights on for the rest of the day, I've got the strongest legs here in Maplewood. This went on for about 4 days and the light situation was corrected.

However, my problems were just beginning. I like all my plants to be in clay pots and I still had about 40 or 50 in plastic and I know that if I went ahead and placed them on the tables that way they would never get repotted. But with the light situation the way it was and the Cardinals play-off's on T.V., I decided to bring a few up at a time and do it at the dining room table and kill 2 birds with one stone. Needless to say, I had one heck of a mess. I started repotting on the 16th of October and finished on the 31st.

I think Frank is as happy as I am, he's not as red in the face and his bottom lip has come back up to form a long lasting smile on his face. I think it's because he's finally got room to sit at the table and drink his beer. It's amazing years ago I used to say "Love me love my dog" now it has changed to "Love me love my cactus." They say "Love is blind" but I guess in my case "Love feels no pain".

All I've got to say is if I'm willing to go through all this for a few plants, Lord help if I ever get into any other babies.

Everything is fine now around the Philipps household but my daughter, Sherry, has laid down the law.

" NO MORE PLANTS TILL SPRING"



UNEXPECTED PLEASURE

One of the joys of gardening is finding unexpected surprises. I'm always looking and finding an "Oh look!" such as "It has flower buds!; it's not dead after all," seeing a bit of new growth peaking out from the 'dead' plant. I never throw out almost-dead plants; too many have surprised me and struggled back to life.

Yesterday I was pulling some weed agaves out of my big planter, trying to get the roots so they would not regrow. A plant (Calibanus hookeri) I wanted was in the middle. "Well I'll take it out too and then replant it" I said, and then came the surprise when I got it out. "It's huge." The tuber-like caudex that grows under the ground had grown so much. "Wow, it's beautiful! I'm not going to plant it back and hide it. It's going to get a good pot and be put where it can be seen."

Now it looks like a specimen plant, unusual and elegant - an "Oh look!" plant!

Patsy Wade

AH, JANUARY !!!

Almost by accident I purchased a calendar which is going to be very useful throughout the year. It's titled Elna Bakker's A SOUTHERN CALIFORNIA NATURE CALENDAR for 1988 and it is as full of information as it is unpretentious. The following is from the month of JANUARY:

"JANUARY HIGHLIGHTS: ● "Spring" tide month - extra lows expose tidepools.
● First swallow and hummingbird arrivals
● Expect both cold snaps and rainless periods"

"SALT MARSH PLANTS: Most of the plants of this environment are halophytes (salt tolerant.) Many species are succulent - pickleweed and fleshy jaumea. They have adapted to salty soils by storing water in fleshy leaves. Other plants get rid of salt through special glands."

"January is often a dry month in southern California (the "Rose Bowl syndrome"?) Any annuals and newly planted perennials should be watered every week to ten days to tide them over until the mini-drought is over!"

"CABRILLO NATIONAL MONUMENT in the San Diego area is a good place to visit. "Take the Bayside Trail to find the coast prickly pear and the rare snake cholla." Bergerocactus emoryi, Ferocactus viridescens, and Mammillaria dioica "occur in the monument. Check out Shaw's century plant, almost extinct as a wild plant elsewhere in San Diego County." ... "The monument is an excellent place to whale watch. Hundreds of these huge mammals migrate up and down the coast, going south in the late fall and early winter to lagoons in Baja where the females calve, going north in spring to feeding grounds in the north Pacific."

I purchased my calendar from a volunteer at the Huntington, but it apparently is available through the Southern California Horticultural Institute, or the THEODORE PAYNE FOUNDATION, 10459 Tuxford Street, Sun Valley, CA 91352, (818) 768-1802.

Their WILDFLOWER HOTLINE number is operational 24 hours a day FROM MARCH THROUGH MAY (818) 768-3533. We will try to have more info. on this in the March newsletter.

Carol

NOTE: Does anybody know if the Cabrillo National Monument does indeed have succulents to visit and photograph in the wild?

Also, the referencé above to halophytes will be familiar to some of you. You will have read that like most succulents, many halophytes use CAM metabolism to hold onto the water they are storing inside.



LBCC PLANT AUCTION 1987!

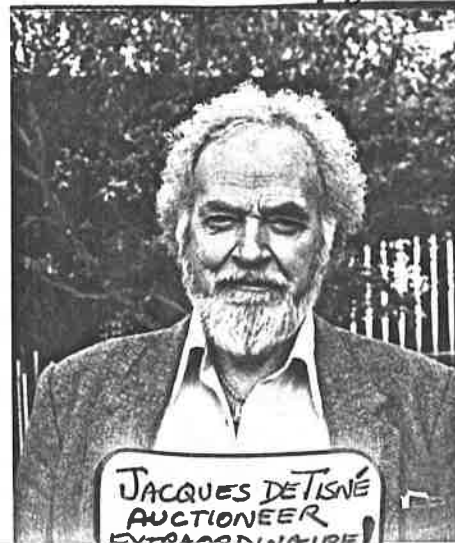


PHOTO KEY: PAGE 1 TOP:
 EVERYBODY + VICTOR TURECEK AT
 REAR / BOTTOM: JACQUES DETISNE/
 BILL HAGBLUM DOING A TURN AS
 RELIEF AUCTIONEER (THANK YOU'S
 ALSO TO WOODY + VICTOR).

PAGE 2+3 TOP: BARRY PECK, TOM
 LOEHMAN, JIM HANNA (SEATED),
 WOODY MINNICH, + CAROL LOEHMAN/
 MYSTERY MAN PHOTO.

BOTTOM: SHARON + BOB THOERNER/
 LAVERNE PITZER + MARGE SNYDER/
 JIM HANNA, CAROL LOEHMAN +
 WOODY + BABY SARAH MINNICH.

PAGE 4 TOP: ROWENA THOMPSON +
 CHARLES SPOTTS / BARRY PECK/
 BOTTOM: WOODY MINNICH + BABY
 SARAH.



QUESTION! WHICH ONE OF THE PEOPLE
 PICTURED ABOVE WORKED
 5 HOURS NON STOP?



WHO CAN THIS BE WHO
 IS HIDING AMIDST
 THE CREPE MYRTLE
 FOLIAGE? COULD IT
 BE OUR MYSTERIOUS
 GUARDIAN OF THE
 ADOBE GARDEN? COME
 SEE - PART 2 OF THIS
 AUCTION SPECIAL!



A BIG THANK YOU
 TO OUR GRACIOUS
 HOSTS, THE THOERNERS!



SPRING OPEN HOUSE

SATURDAY, MARCH 5, 10 A.M. TO 2 P.M.

Wine and cheese with demonstrations, tours and a plant sale.
Free admission for Friends of the UCI Arboretum; \$5 for others.

The Spring Open House is your opportunity to see many of our spring-flowering bulbs at the peak of bloom. While you're here, we invite you to enjoy a bit of wine and cheese as you renew acquaintances among our plants and the other visitors.

ers (about 2 feet long) in the world;

- corms of unique gladiolus hybrids bred by John Cook between our rare African glads and his standard glads;
- tubers of named dahlia cultivars donated by Dr. Merle Robboy.

The plant sale will feature various unique items sought by hobbyist gardeners and avid collectors. Among the selections we plan to have available are the following:

Demonstrations will be Repotting Cymbidium Orchids by Bill Fogarty, Arboretum Manager, and Pollination and Hybridizing by Dr. Harold Koopowitz, Director of the Arboretum/ Gene Bank.

- orchid plants in flower;
- the 'Irvine' geranium so many of you asked for at our recent bulb sale;
- Aristolochia grandiflora var. Hockeri (A. gigantea), the giant Dutchman's pipe, a slow growing vine with some of the largest true flow-

The Open House will be free to our Friends of the UCI Arboretum, \$5 for others. Those who become a Friend of the UCI Arboretum by paying \$20 at the door may also enter free.

--- AN ENDANGERED PLANT SPECIES IS AT OUR DOORSTEP ---

Dudleya multicaulis, a species endemic to this area and which exists in only a few populations in the world, grows on the main campus of the University of California, Irvine. This species is among the rarest of its genus in the world and is a candidate for listing as a Federal Endangered Species.

accident doesn't happen again and "to ensure the continuing welfare of the population," said Dr. Harold Koopowitz, director of the arboretum. "We will start studying this population to monitor them and to determine if the population is stable.

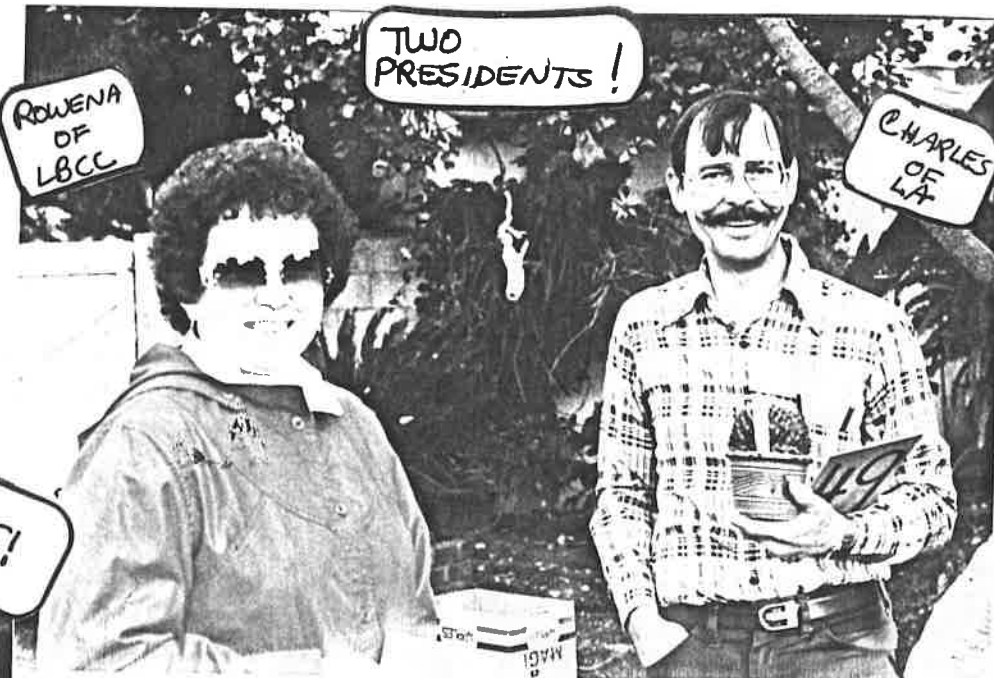
Unfortunately, much of our own population was recently wiped out when a holding yard for chemical wastes was enlarged.

The bulldozed population of Dudleya was rather small, perhaps fewer than 100 individuals. Two or three other populations have previously reported as growing on campus, but "their current status isn't known," says Koopowitz.

The arboretum plans to work with the university to ensure that a similar

- UCI ARBORETUM

THANKS TO ALL WHO CAME + JOINED IN!



TWO PRESIDENTS!

ROWENA OF LBCC

CHARLES OF LA

HI FOLKS!

ONE FINAL THING: THE AUCTION WAS A SUCCESS!

PROUD POPPA!



HAVE I GOT ANOTHER SURPRISE FOR DAD!

THUS ENDS PART ONE OF AUCTION '87 N.L. Special ADDITION!

PART TWO WILL BE AT THE MEETING

COME TO THE MEETING SUNDAY!

CALENDAR CALENDAR CALENDAR CALENDAR CALENDAR CALENDAR

- Jan. 24 - Sunday - OUR REGULAR LBCC MEETING at the Library, 1:00 PM featuring KEI NAKAI ON DUDLEYAS! Also all our usual bragging table, plant of the month, refreshments, door prize, end-of-the-meeting prizes, birthday plants, and sales will resume, as well as business meeting.
- Jan. 30 - Saturday, CSSA Board Meeting, 1:00 PM at the LA Arboretum, Lecture Hall, 301 N. Baldwin Ave., Arcadia.
- Jan. 31 - Sunday - OUR BOARD MEETING at 1:00 PM at Terry & Clem's home. Map and more info. inside this newsletter.
- Feb. 9 - Tues. at 7:30 PM at South Coast, the South Bay Epi. Society will have a special program: Dr. Seymour Linden will present a slide lecture entitled "Collecting Epiphytes in Costa Rica and Bolivia."
- Feb. 19, 20, 21 - Southwest Succulent Conference in Texas, for those of you who are free to travel. Please see the Dec. newsletter.
- Feb. 28 - Sun. - OUR REGULAR MEETING at the Library, 1:00 PM.

LOOKING AHEAD: THE ZOO PLANT SALE WILL BE HELD ON SAT. & SUN. APRIL 16 & 17.

DISASTER STRIKES OUR GARDEN. MORE INFO INSIDE N.L.

LONG BEACH CACTUS CLUB

CACTUS COMPANION

10860 El Mar Avenue

Fountain Valley, CA 92708

F I R S T
C L A S S

