

May 2012

Roadrunner News

Newsletter of the Long Beach Cactus Club

Founded 1933; Affiliate of the Cactus and Succulent Society of America, Inc.

PROGRAM: Kelly Griffin is giving a presentation **Lemurs, Lizards and Aloes – Madagascar Revisited**. Kelly made the trip in April of 2011. He spent three and one half weeks in the hinterlands of Madagascar seeking out new plants. This is an account of some of what he was able to see and photograph. It has a little about the flora and fauna of Madagascar and everything in between.

Kelly is the curator of xeric plants at Rancho Soledad Nurseries (www.ranchosoledad.com). A virtual plant Disneyland in Rancho Santa Fe, CA. Kelly, along with his business partner, Allen Repashy, also runs Xericgrowers (Xericgrowers.com) specializing in propagation of unique cultivars and select forms of Succulent plants.

Please check out the Xericworld forum too @ Xericworld.comits about plants!

Kelly will be bringing plants for sale to the meeting.

LOCATION: Dominguez Rancho Adobe, 18127 South Alameda Street, Rancho Dominguez, CA 90220. Take the 91 Redondo Beach/ Artesia Freeway and exit south on Alameda. Signs for the Adobe are posted on the freeway and on Alameda. Coming from the freeway, the entrance to the Adobe is on the right or west side of Alameda. The meeting will be in the Carriage House which is at the south end of the Dominguez Rancho Adobe Museum. It is at your right as you turn off the entry road into the parking area.

TIME: Sunday, May 27, 2012 at 1:00 p.m. We will follow this schedule: 1:00 to 1:30 -- setup and refreshments, 1:30 to 3:30 -- general meeting and program, 3:30 to 4:00 – cleanup.

PLANT-OF-THE-MONTH:

Cactus: Cereus (Columnar cactus)
Succulent: Monadenium/Jatropha

REFRESHMENTS: We will follow the alphabet to determine who is to bring the snacks and finger foods. This month, those with last names starting with the letters **G through L** are asked to bring the goodies. Please feel free to bring something even if you don't fall into this group.

DOOR PRIZES, BIRTHDAY PLANTS & PLANT SALES: Free plant for first time visitors.

PLANT RAFFLE: Tickets are \$1.00 each or six for \$5.00. **Members are asked to donate any plants they would like to pass along that they think others would like to buy.** Previous months' raffles have been big successes with several dozen plants available.

LBCC MEETING DATES 2012

	<u>Speaker</u>	<u>Topic</u>
May 27	Kelly Griffin	Madagascar
Jun 24	Todd Masilko	Pachycauls
Jul 22	Tom Knapik	Geometric Geophytes
Aug 26	Woody Minnich	Namibia
Sept 23	Annual LBCC Auction at the Adobe	
Oct 28	Doug Dawson	South Africa
Nov 18	Mike Buckner	Landscaping with Succulents
Dec ??	Holiday Party?	

**CACTUS AND SUCCULENT
CALENDAR OF UPCOMING EVENTS FOR 2012
UPDATED 12/14/2011**

- MAY 18-19** GATES CACTUS AND SUCCULENT SOCIETY SHOW AND SALE FRI & SAT 9-4:30 pm
JURUPA MOUNTAINS CULTURAL CENTER, 7621 GRANITE HILL DRIVE
GLEN AVON, CA INFO. 951-360-8802
- MAY 26-27** CENTRAL COAST CASTUS & SUCCULENT SOCIETY
ANNUAL SHOW & SALE (10-4PM), LUDWICK CENTER, 864 SANTA ROSA
SAN LUIS OBISPO, CA – INFO. 805-237-2054, www.centralcoastcactus.org
- JUNE 2 & 3** SAN DIEGO CACTUS AND SUCCULENT SOCIETY –SUMMER SHOW AND SALE
BALBOA PARK, ROOM 101, SAN DIEGO, CA. INFO. 858-382-1797
- JUNE 9-10** LOS ANGELES CACTUS and SUCCULENT SOCIETY PLANT SHOW AND SALE 11th 9-5, 12th
9-3:30 SEPULVEDA GARDEN CENTER, 16633 MAGNOLIA BLVD. ENCINO, CA INFO.
E-MAIL LACSS.Contact@gmail.com
- JUNE 29-JULY 1** CSSA ANNUAL SHOW AND SALE – HUNTINGTON BOTANICAL GARDENS
1151 OXFORD ROAD, SAN MARINO, CA.
626-405-2160 or 2277 PLANTS SALES START JUNE 29TH THRU JULY 1ST
THE SHOW OPENS ON THE JUNE 30TH THRU JULY 1ST FREE TO THE PUBLIC
- JULY 27-28** ORANGE COUNTY CACTUS AND SUCCULENT SOCIETY SUMMER SHOW AND SALE.
FRIDAY JULY 27TH Noon until 7pm, SATURDAY JULY 28TH 9am to 5pm
1000 S. State College Bl., (Anaheim United Methodist Church) Anaheim, CA
CONTACT VINCE BASTA 714-267-4329
- AUG. 11-12** 27th ANNUAL INTERCITY SHOW AND SALE AT THE LA COUNTY ARBORETUM,
9am-5pm daily. 301 NO. BALDWIN AVE., ARCADIA, CA.
INFO. CALL TOM GLAVICH 626-798-2430 or JOHN MATTHEWS 661-297-5364
- SEPT. 1** HUNTINGTON BOTANICAL GARDENS SUCCULENT SYMPOSIUM
ALL DAY AT THE HUNTINGTON
- SEPT. 23** LONG BEACH CACTUS CLUB ANNUAL PLANT AUCTION
18127 SOUTH ALAMEDA ST., RANCHO DOMINGUEZ, CA----12 PM
- NOV. 3-4** SAN GABRIEL VALLEY CACTUS AND SUCCULENT SOCIETY
SHOW AND SALE---LA COUNTY ARBORETUM ADDRESS ABOVE.
- NOV. 9-10** ORANGE COUNTY CACTUS & SUCCULENT WINTER SHOW AND SALE 9am-5pm
1000 S. State College Bl., (Anaheim United Methodist Church) Anaheim, CA
CONTACT VINCE BASTA 714-267-4329

Long Beach Cactus Club

Columnar Cacti

Columnar or ceroid cacti are not a closely related set of genera, but a lumping together of all the cacti that are much longer than they are around. Columnar cacti vary in size from a few inches, as in the aptly named, *Pygmaeocereus* to the giants like *Pachycereus* and *Carnegiea* (Saguaro). Most are robust growers, given adequate water, fertilizer, root room and support. They expect more nitrogen in their soil (or plant food) and more water than most globular cacti. They do well in normal cactus soil, as long as they get additional fertilization.



Cleistocactus smaragdiflorus

Propagation is generally by cuttings or seed. Cuttings need to be dried well before planting. A few weeks is the minimum for some of the larger columnar species. They do best if dried in an upright position. If placed on their sides the cut end rots easier. Seed of columnar cacti are readily available, and are particularly

enjoyable to grow. While all of the globular cacti are the size of a pea, many of the columnar cacti are filling the pot, and an inch or more high. If grown from seed, many will not tolerate crowding for long, and demand their own pot. This is particularly true of *Oreocereus*, which will quickly stop growing if there is more than one plant per pot.

A look through any of the references listed below gives many genera names that are rarely seen in cultivation. This is because the plants take many years to reach flowering size, are only really happy in the ground, and get too big for pots in any case. Some genera are very popular, and these are described below.

Popular North American Ceroids

Pachycereus (*Backbergia*, *Cephalocereus*) *militaris* is a difficult to grow ceroid from central Mexico with a beautiful large yellow cephalium that it wears like a military dress hat. Once seen, it is never forgotten.

Cephalocereus senilis is the popular ‘Old Man cactus’. It is surprisingly difficult to grow into a large specimen, subject to rot if it gets cold and damp. It is native to Hidalgo Mexico.

Carnegiea gigantea or the Saguaro is another large plant, this time from Arizona, with a few in California.

Popular South American Ceroids

Cereus are found in much of South America. *Cereus peruvianus*, found in many Southern California gardens, has been cultivated for over 400 years, and is not know in the wild!

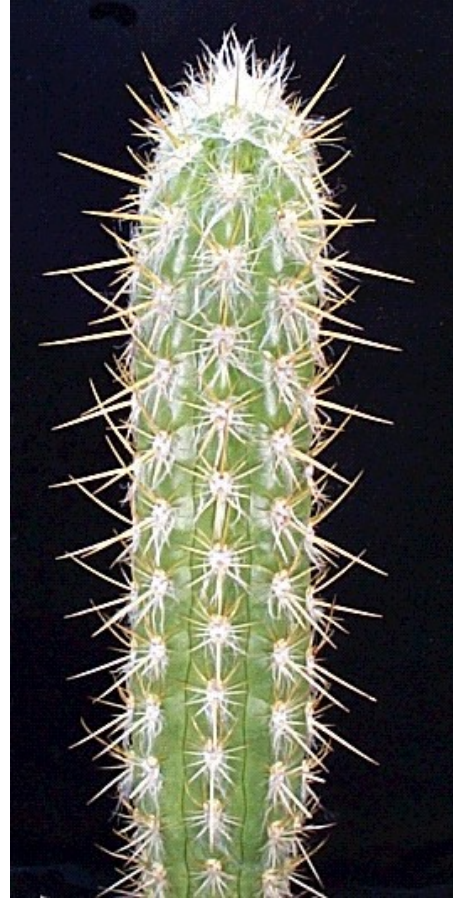
Cleistocactus is one of the most beautiful genera of the columnar cacti. These slender plants branch from the base, and have dense spination. They are easy to grow, and quickly set flowers that are usually long red tubes sticking out through the spines. Some of the best are *C. smaragdiflorus*, with red flowers, a yellow band near the tip, and a bright green tip. *C. strausii* is a fuzzy white marvel, and often seen at sale tables at shows.

Espostoa come from Ecuador and Peru. Most of these are covered with a dense white wool that entirely hides the plant body.

Haageocereus come from Peru and Chile. They stay short (for a ceroid), rarely exceeding 3 or four feet, and have dense spines, and showy red flowers.

Micranthocereus is a small genus of Brazilian cacti. All of the species branch from the base, and make densely spined clusters. They stay small, and are happy as pot plants.

Oreocereus are beautiful hairy plants, with wicked spines hidden in the hairs. Some branch from the base. They prefer outdoor air to a greenhouse, and need frequent turning to keep symmetrical growth.



Oreocereus umarensis

Pilosocereus is a largely Brazilian genera, almost all of which are worth growing. It has a wide distribution, stretching into central Mexico. Many of the species are a glaucous blue with bright yellow spines and hairy areoles. *Pilosocereus magnificus* is one of these, with 4 to 12 deep ribs. The outer edges are covered with short yellow spines. *Pilosocereus aureispinus* has very 18 to 20 shallow ribs, and distinct areoles, that make dense yellow spirals around the plant on a dark green background.

References:

W. Cullmann, E. Gotz, G. Groner, **The Encyclopedia of Cacti**
E. Haustein, **The Cactus Handbook**
D C. Zappi, *Pilosocereus*

Tom Glavich May 2005

LBCC OFFICERS AND BOARD MEMBERS FOR 2012

PRESIDENT John Luhnnow 310-922-6090 **SECRETARY(TEMP)** **OPEN**
VICE-PRESIDENT **OPEN** **TREASURER** Jess (Vern) Yandell
DIRECTORS, in alphabetical order, are John & Edwina Caceres, John Luhnnow, Dot Miller and Gary Duke (Past President)

COMMITTEES:

AFFILIATE REPRESENTATIVE	Hank Warzybok	NEWSLETTER	David Quadhamer
BIRTHDAY/PRIZE PLANTS	Jim Hanna	PROGRAMS	Woody Minnich
GARDEN CURATOR	OPEN	PUBLICITY – LOCAL	Danielle Linden
HISTORIAN	Ken Shaw	PUBLICITY – SHOWS	Peter Walkowiak
INTER-CITY SHOW CHAIRMAN	Peter Walkowiak	REFRESHMENTS	Javier Arroyo
LIBRARY	Ken Shaw	SHOW & TELL TABLE	Carol Causey
MEMBERSHIP	John Luhnnow	SUNSHINE	Dot Miller
WEBMASTER	David Quadhamer		

MEMBERSHIP

SEND APPLICATIONS to John Luhnnow, 3340 West 152nd St. Gardena, CA, 90249. **Dues** are \$15 per year for regular membership, seniors \$10. (Senior membership is for retired persons, 65 and older.) Checks should be made out to **LBCC**.

IF FOUR OR FIVE OR MORE MEMBERS are interested they may order **official Long Beach Cactus Club member badges**. The cost is \$6.50 per person. Please see club treasurer at the meeting.

NEWSLETTER

IF YOU HAVE ANY STORIES, cultivation tips, information about upcoming calendar events or news in general about cacti and succulents that might interest our members, please send them in or give me a call. **Comments and suggestions are always welcome. Remember, this is your newsletter.** The address is: David Quadhamer, P.O. Box 861, San Pedro, CA 90733-0861. Telephone: (310) 833-3095. Email – davidq@lbcss.org

CLARENCE B. WRIGHT MEMORIAL DESERT GARDEN

COME AT **12:00 PM.**, AN HOUR BEFORE THE REGULAR MEETING and help plant, water and maintain our garden. Find out what's blooming each month and get ideas for your home garden.

SPECIAL THANKS to **RANCHO SAN PEDRO** and the **DOMINGUEZ RANCHO ADOBE MUSEUM** for allowing us to use the grounds for our auction and the site for our monthly meetings. We appreciate the pleasant setting as well as being able to meet near our garden.

LIBRARY

WANT TO CONSULT A BOOK ON CACTI AND SUCCULENTS OR A COPY OF THE **CSSA JOURNAL**? Call librarian Ken Shaw at (562) 430-1237 or email at kenlbca@earthlink.net and he will bring the requested items to the next meeting for you to check out.

!!!! We still have several open positions in the club. Get involved and volunteer to take a role in YOUR club!

LBCC PLANT-OF-THE-MONTH RULES

At the April, 2003 meeting, the following rules were adopted for the Plant-of-the-Month (POM) competition:

- A maximum of three plants may be entered in each category (cactus and succulent).
- There will be three classes for entrants: advanced (blue tag), intermediate (pink tag) and beginner (yellow tag).
- Advanced and intermediate entrants must have had the plant in their possession for at least six months, beginners for three months.
- Entrants will receive 8 points for first place, 6 points for second place, 4 points for third place, 2 points for show/honorable mention (HM) and 1 point for showing a plant that does not place.
- At the discretion of the judges there may be up to three third places in a category. If plants are not deemed to be of sufficient quality, no third place will be awarded.
- For an entrant to receive points, the entry tags must be collected by the person in charge of record keeping for POM.
- At the annual Christmas party, award plants will be presented to the ten highest cumulative point holders regardless of class.

2012 LBCC PLANTS-OF-THE-MONTH

<u>MONTH</u>	<u>CACTUS</u>	<u>SUCCULENT</u>
January	Mammillaria	Aeonium
February	Echinocereus	Haworthia/Astroloba
March	Neochilenia/Neoporteria	Sedum/Pachyphytum
April	Astrophytum	Sansevieria
May	Cereus (Columnar Cactus)	Monadenium/Jatropha
June	Opuntias	Adromischus
July	Notocactus/Parodia	Euphorbia African
August	Favorite (3)	Favorite (3)
September		LBCC Auction
October	Lobivia/Echinopsis	Succulent Bromeliads
November	Miniature (3) Under 3"	Miniature (3) Under 3"
December		HOLIDAY PARTY

2012 POM STANDINGS

Advanced		Intermediate		Beginner	
Ken Shaw	76	Bob Gillett	122	Jade Neely	109
Gary Duke	57			John Drake	27
Jim Hanna	48			Evelyn Maxwell	21
Hank Warzbok	11			David Quadhamer	12

We are planning on working in the garden after the meeting.

Plant-of-the-Month Winners - April

Cactus – Advanced		Succulent – Advanced	
1. Ken Shaw	Astrophytum ornatum	1. Jim Hanna	Sansevieria pinguicula
2. Ken Shaw	Astrophytum asterias	2. Ken Shaw	Sansevieria ehrenbergii
3. Ken Shaw	Astrophytum ornatum	3	

Cactus – Intermediate		Succulent – Intermediate	
1. Bob Gillett	Astrophytum ornatum	1. Bob Gillett	Sansevieria ehrenbergii
2. Bob Gillett	Astrophytum ornatum	2. Bob Gillett	Sansevieria trifasciata 'hahnii'
3. Bob Gillett	Astrophytum ornatum	3. Bob Gillett	Sansevieria trifasciata 'laurentii'

Cactus – Beginner		Succulent – Beginner	
1. Jade Neely	Astrophytum ornatum	1. Jade Neely	S. trifasciata 'Lillian True'
2. John Drake	Astrophytum myriostigma	2. Jade Neely	S. trifasciata 'Bantel's Sensation'
3. John Drake	Astrophytum myriostigma	3. Jade Neely	Sansevieria 'Baseball Bat'

LONG BEACH CACTUS CLUB MEMBERSHIP APPLICATION

2012 DUES INFORMATION-ONE YEAR

Regular membership \$15.00
Senior Membership (retired person, age 65 or older) \$10.00

Please make out checks to LBCC (Long Beach Cactus Club) and give or send them to the treasurer:

John Luhnnow, 3340 West 152nd St., Gardena, CA 90249

NEW MEMBER : ____ RENEWAL : ____ **TOTAL ENCLOSED: \$ ____.** Date: _____

NAME: _____

ASSOCIATE MEMBER (S): _____

ADDRESS: _____ APT:- _____

CITY: _____ STATE: ____ ZIP CODE: _____ HOME PHONE:(____) ____ - _____

CELL PHONE: (____) ____ - ____ E-MAIL: _____

BIRTHDAY MONTH: _____ FAVORITE CACTI OR SUCCULENT: _____

David Quadhamer
Editor, Roadrunner News
P.O. Box 861
San Pedro, CA 90733-0861

FIRST CLASS PLEASE