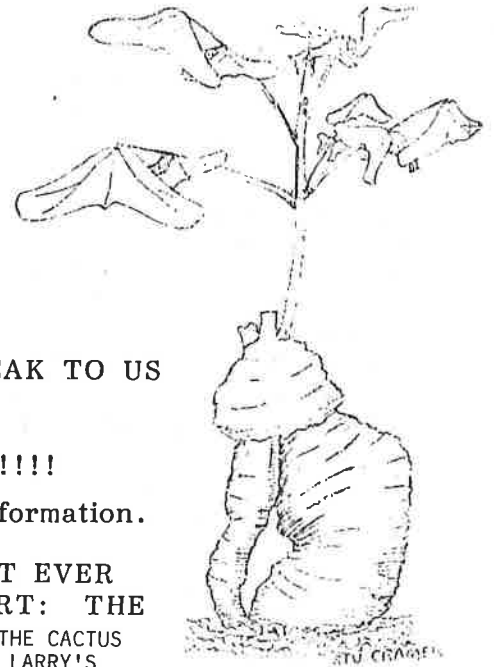


LONG BEACH CACTUS CLUB NEWSLETTER
THE CACTUS COMPANION

May 1988 May 1988 May 1988 May 1988



MEETING THIS SUNDAY AT 1:00 P.M. at the
Iacoboni Library on Clark in Lakewood.

FEATURING: JOE CLEMENTS WHO WILL SPEAK TO US
ON.....CAUDICIFORMS!

PLUS.....MAY MADNESS PLANT RAFFLE!!!!

Please see inside your newsletter for more information.

ALSO...PHOTO REPORT ON THE LBCC FIRST EVER
TWO-DAY VEHICLE CARAVAN TO THE DESERT: THE

EAST MOJAVE! BELOW ARE PICTURED (CHOOSE ONE) (A) THE CACTUS
COHORTS, (B) AN ASSORTMENT OF CRAZED CACTOPHILES, OR (C) LARRY'S
SMOGALOPOLIS REFUGEES AND SEEKERS OF ALL TRUTHS CACTOPHITIC! WHO ARE THESE SEEKERS?
FROM LEFT TO RIGHT: CHARLES SPOTTS, LAVERNE PITZER, JOE & CAROL WUJCIK, TERRY & CLEM
GOEWERT, TRAIL GUIDE & WAGON MASTER LARRY GRAMMER, ROBERTA HANNA, & REED PITZER. NOT
PICTURED ARE CHARLES SPOTTS' WIFE & GRANDSON, & OF COURSE THE PHOTOGRAPHER, JIM HANNA.
WHAT DID WE SEEK? TO SEE OUR PLANTS IN HABITAT & PHOTOGRAPH THEM, & TO EXPERIENCE THE
DESERT TOGETHER. AND THE EXPERIENCE WAS WONDERFUL; IT WAS A GIFT! THANK YOU LARRY!!!



1988 OFFICERS AND CHAIRPERSONS

President: Rowena Thompson (213) 835-0393
 Vice Pres. - Kathi Reyes (213) 591-7330
 Secretary - Terry Coewert (714) 962-3839
 Treasurer - Jim Hanna (213) 920-3046

Affiliate Rep. - Lillian True (714) 837-4494
 Bragging Table - Bill Hagblom (714) 538-6186
 Birthday Plants - Rose Wey (213) 869-8024
 Garden Curator - Ted Taylor (213) 569-3368
 Librarian - Darryl Tucker (213) 421-8175
 Programs - Audrey Tucker " " "
 Refreshments - Kathi Reyes (213) 591-7330
 Show Chairman - Larry Grammer (213) 599-0856
 Sunshine - Laverne Pitzer (213) 429-3271
 To the above and those chairpersons we don't
 have room to list, THANK YOU!

Dues: Regular membership is \$8, senior membership is \$5, and each same home membership is \$1.50. Please contact your membership chairmen: Marge Snyder 199009-308 Laurel Park Rd., Dominguez Hills, CA 90220, or Terry Dew, 5328 Carita, Long Beach CA 90808.

* * * * *

Newsletter: Carol Wujcik (714) 963-3146, 10860 El Mar Ave., Fountain Valley, CA 92708.

LARRY'S JOSHUA TREE - BELOW IS PICTURED YUCCA BREVIFOLIA VAR. JAEGERIANA, A SMALLER MORE COMPACT, BRANCHED FORM OF WHAT WE THINK OF AS THE TRADITIONAL JOSHUA TREE. THIS PLANT IS HIGHLY VISIBLE THROUGHOUT MUCH OF THE EAST MOJAVE SCENIC AREA. ONE HABITAT DESCRIPTION FOR THE PLANT IS: BASALTIC OUTCROPPINGS, IGNEOUS SANDY SOIL, GROWING WITH Y. SCHIDIGERA, CREOSOTE (LARREA), CHOLLAS ---A HIGH DESERT PLANT. THIS ESPECIALLY FINE SPECIMEN IS ONLY ABOUT 6 OR 7 FEET TALL. LARRY MENTIONED IT PARTICULARLY AS A FINE SUBJECT, AND BELOW IS JIM HANNA'S PHOTO OF "LARRY'S JOSHUA TREE" - AT THE BASE OF CLARK MOUNTAIN, OUR FIRST STOP ON THE SECOND DAY.



DIOSCOREA HEMICRYPTA (TESTUDINARIA GLAUCA) ON THE LEFT, AND UNIDENTIFIED BOWTEA SPECIES FROM THE ORANGE FREE STATE IN SOUTH AFRICA ON THE BACK COVER, ARE BY BILL BARNETT FOR THE 1980 #5 CSIE, GRACE ROLLERSON EDITOR. BARNETT WROTE THAT THE BOWIEA "...HAS A MARVELLOUS, ELECTRIC-CORD-THICK VINE". THE DIOSCOREA HAS A SEMI-UNDERGROUND CAUDEX AND IS NATIVE TO SOUTH AFRICA ALSO. BOTH OF COURSE ARE CAUDICIFORMS, WHICH GROUP OF PLANTS WILL BE FEATURED AT OUR MAY MEETING.

IN HIS WONDERFUL BOOK CAUDICIFORM & PACHYCAUL SUCCULENTS (1987, STRAWBERRY PRESS), GORDON ROWLEY WRITES: "CAUDICIFORM SUCCULENTS ARE PLANTS THAT SURVIVE PERIODIC DROUGHT BY MEANS OF A SWOLLEN, PERENNIAL, WATERY STORAGE ORGAN FROM WHICH ARISE SLENDER, USUALLY ANNUAL PHOTOSYNTHESIZING ORGANS: CLIMBING OR TWINING SHOOTS MOSTLY." PG.1

ABOUT THE WORD "PACHYCAUL" HE WRITES: "IT RELATES TO ANY TREE OR SHRUB WHERE THE TRUNK IS ABNORMALLY THICK. THE SHAPE MAY BE CONICAL, TAPERING FROM THE BASE UPWARDS (FOUQUIERIA COLUMNARIS...ADENIA SPP.), OR LIKE A FLASK (NOLINA), BOTTLE OR BARREL (BRACHYCHITON) OR INDEED ALMOST ANYTHING OTHER THAN CYLINDRICAL." PG. 12

MOST HOBBYISTS USE THE WORD CAUDICIFORM TO APPLY TO PACHYCAUL AS WELL AS MANY PLANTS WHICH DON'T QUITE FIT EITHER DEFINITION ABOVE EXACTLY. THE STORAGE ORGAN OR RESEVOIR MAY BE BELOW GROUND IN NATURE, BUT RAISED BY HOBBYISTS FOR AESTHETIC AND/OR CULTURAL REASONS.

COME FIND OUT MORE, AND BRING YOUR SPECIMENS, AT OUR MAY MEETING:

MEETING: This Sunday May 22 at 1:00, at the Iacoboni Library.

PROGRAM: Joe Clements of the Huntington on CAUDICIFORMS! Utilizing both slides and wonderful specimens, Joe will tell you all about these fascinating and sculptural plants.

REFRESHMENTS: Virginia Martin and Sharon Thoerner will be joining Kathi Reyes. THANK YOU!

PLANTS OF THE MONTH: Caudiciforms (& Pachycauls) Cacti & Succulents. Novice and Advanced.

SPECIAL: MAY MADNESS PLANT RAFFLE: Like last May, this will be a raffle of DONATED plants, & cuttings. Bring your extras, buy tickets & bring home new & interesting things!

BRAGGING PLANTS, SALES, BIRTHDAY PLANTS & PRIZES! & LIBRARY!

CAUDICIFORM DRAWING ON FRONT PAGE: THE SKETCH BY STU CRAMER OF ERYTHRINA VESPERTILIO IS FROM THE 1977 CSIE (NOW ALAS OUT OF PRINT), GRACE ROLLERSON EDITOR. STU CRAMER, WHO LIVES IN FLORIDA, WROTE THE FOLLOWING ABOUT THIS PLANT:

"ERYTHRINA VESPERTILIO HAS NO BUSINESS BEING A SUCCULENT PLANT AND INDEED IN AUSTRALIA WHERE THIS SPECIES LIVES IT GROWS INTO A 40 FOOT TREE. SEVERAL YEARS AGO I PURCHASED SOME SEED FROM BRUDY'S RARE PLANT HOUSE, BOX 1348, COCOA BEACH, FLA. 32931. AFTER BEING SCORED THEY GERMINATED AND GREW INTO TWO FOOT HIGH LEGGY, FLOPPY MOST UNDESIRABLE LOOKING THINGS EXCEPT FOR THEIR INTERESTING LEAVES. IT'S BECAUSE OF THESE LEAVES THAT THE PLANT GETS THE COMMON NAME OF 'BAT-WING CORAL TREE'. EACH LEAF IS COMPOSED OF THREE BROAD LEAFLETS AND IN THIS SPECIES THE LEAFLETS CAN GET 3 TO 4 INCHES ACROSS WHILE REMAINING QUITE NARROW. THEY RESEMBLE MINIATURE FLYING BATS. LIKE MOST ERYTHRINAS, VESPERTILIO DEVELOPS A REMARKABLE CAUDEX AT THE BASE. BY KEEPING THE PLANTS IN SMALL CONTAINERS AND RAISING THE CAUDEX A LITTLE EACH YEAR, THE RESULT IS WHAT YOU SEE IN THE PICTURE...A 4-YEAR-OLD PLANT WITH NEW GROWTH, THE LEAVES ABOUT HALF THE SIZE THEY WILL BE. BY KEEPING THE PLANTS IN FULL SUN THE TOPS WON'T GET UNGAINLY. ERYTHRINAS CLOSE UP THEIR LEAVES AT NIGHT SIMILAR TO OXALIS, AS DO MANY LEGUMES (OXALIS IS NOT A LEGUME). AT THIS STAGE MY ERYTHRINA VESPERTILIOS ARE DEFINITELY CAUDICIFORMS, AND I CALL THEM MY 'HOME-MADE' SUCCULENTS..."

LBCC FIELD TRIP TO THE EAST MOJAVE!
TWO-DAY VEHICLE CARAVAN
SATURDAY & SUNDAY APRIL 23 & 24
THE DESERT

"Mary Austin called this the Land of Little Rain and that is better than 'desert.' (But) even her phrase (Land of Little Rain) is negative; it stresses what the country does not have rather than what it does. Land of Much Sunshine, might almost do. It has at least the advantage of seizing upon an indubitable fact. Land of Too Much Sunshine some might call it; but it is not, for a while at least, too much for those of us who have seldom had enough.

"On the brightest and warmest days my desert is most itself because sunshine and warmth are the very essence of its character."

— Joseph Wood Krutch

QUOTATIONS: The quotes from Joseph Wood Krutch and the poet Octavio Paz (translated by Muriel Rukeyser) are from a Sierra Club book, BAJA CALIFORNIA AND THE GEOGRAPHY OF HOPE, 1967.

My copy of this book was purchased used awhile ago from Rainbow Gardens Books. It took maybe one second to know I wanted this book for the photographs. It took only a few more seconds to know I had to have it for the words. It's said that a photograph is worth a thousand words, and ordinarily that may sometimes be true. But when the words are just right, then they can say what a reproduced image may only suggest. With the best of words we see inside others and inside ourselves. We see our world in new ways. And yet still I admit our "seeing" may be just a beginning.

THE FIELD TRIP

THESE PAGES CAN ONLY RECORD A FEW MOMENTS OF OUR DESERT EXPERIENCE. THEY ARE NOT IN CHRONOLOGICAL ORDER. A LIST OF EVENTS WON'T DO, BECAUSE WHAT WAS MOST IMPORTANT WAS BEING THERE IN FELLOWSHIP WITH EACH OTHER AND THE DESERT, SEEING THE FORMS AND COLORS OF THE LAND AND PLANTS, BREATHING IN THE PUNGENT AND FRESH SMELLS, FEELING THOSE THINGS WHICH CALL UP WORDS LIKE JOY AND EXHILARATION AND WONDER. HOW SPLENDID IT WAS TO BE THERE VISITING OUR PLANTS WHERE THEY LIVE!

AS IT OFTEN IS, THE STRUGGLE TO REACH THESE SPECIAL SIGHTS, THESE SPECIAL PLANTS, WAS PART OF THE EXPERIENCE — THE BITTER COLD SATURDAY NIGHT AND THE ROUGH ROAD SUNDAY — THESE MADE THE REWARDS ALL THE MORE SATISFYING. WE DID IT! YET AT THE SAME TIME, WHAT WE SAW AND FELT WERE GIFTS — WONDERFUL, WONDERFUL GIFTS!

THANK YOU!

"The future of mankind is dubious. Perhaps the future of the whole earth is only somewhat less dubious. But one knows that all does not depend upon man, that possibly, even, it does not depend upon this earth. Should man disappear, rabbits may well still run and flowers may still open. If this globe itself should perish, then it seems not unreasonable to suppose that what inspires the stem and the flower may exist somewhere else. And I, it seems, am at least part of all this."

— Joseph Wood Krutch

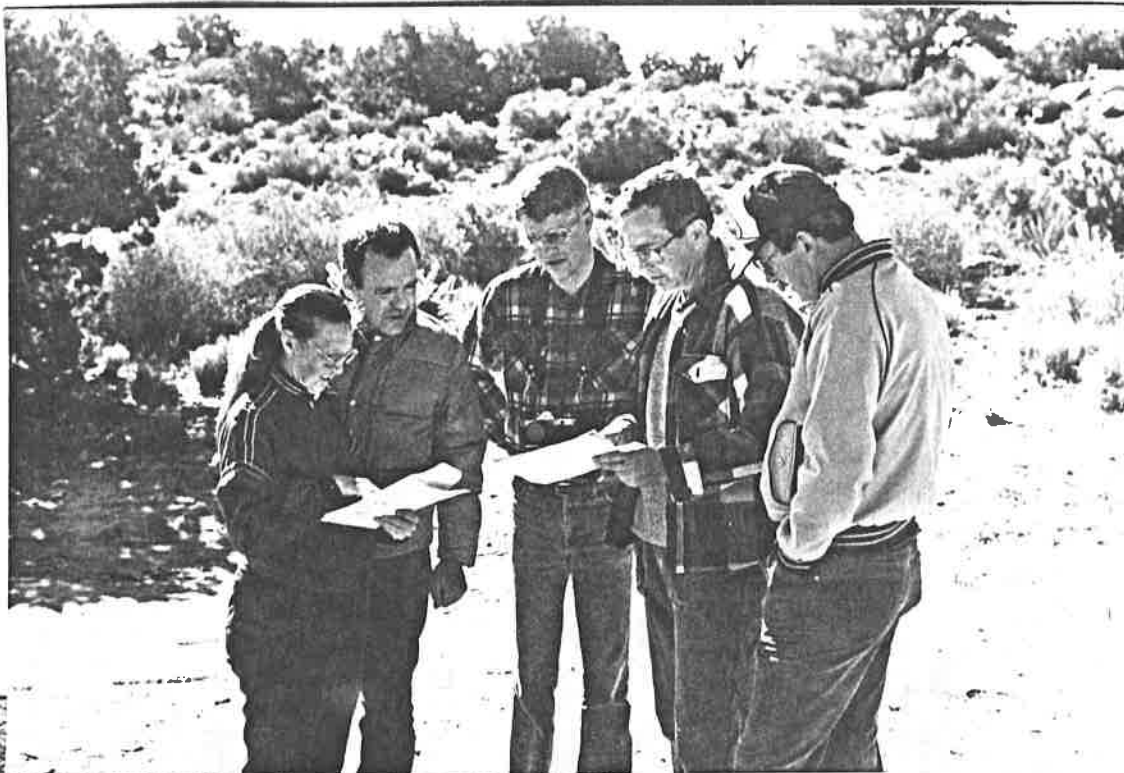


THIS IS LARRY GRAMMER, OUR TRAIL GUIDE AND WAGON MASTER WHO LED US INTO THE WILDERNESS! WITH HIM IS A FINE CLUMP OF ONE OF THE MOST BEAUTIFUL OF ALL CACTI, ECHINOCACTUS POLYCEPHALUS, WITH DUSKY PINK & ROSE SPINES AND OFTEN WOOLLY CROWNS. THE COMMON NAME IS COTTONTOP, BUT THIS CLUSTERING BARREL CACTUS IS MORE IMPRESSIVE THAN ITS COMMON NAME. IT IS STRONGLY SHAPED AND STRONGLY SPINED YET THE DELICATE COLORS OF ITS SPINATION REMIND ONE OF THE PINK AND PEARL SKIES SEEN OVER GREAT DISTANCES AT DAY'S BEGINNING, OR DAY'S END.

LIKE MANY OF OUR CALIFORNIA NATIVE CACTI, IT IS A PLANT SELDOM SEEN IN COLLECTIONS BECAUSE OF ITS DIFFICULTY OF CULTIVATION.

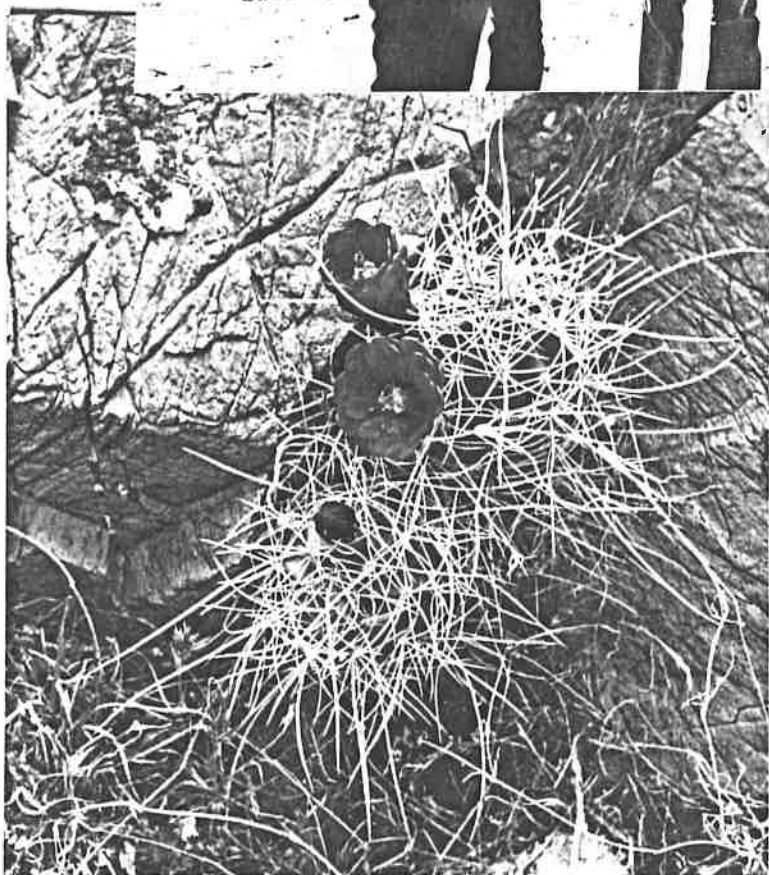
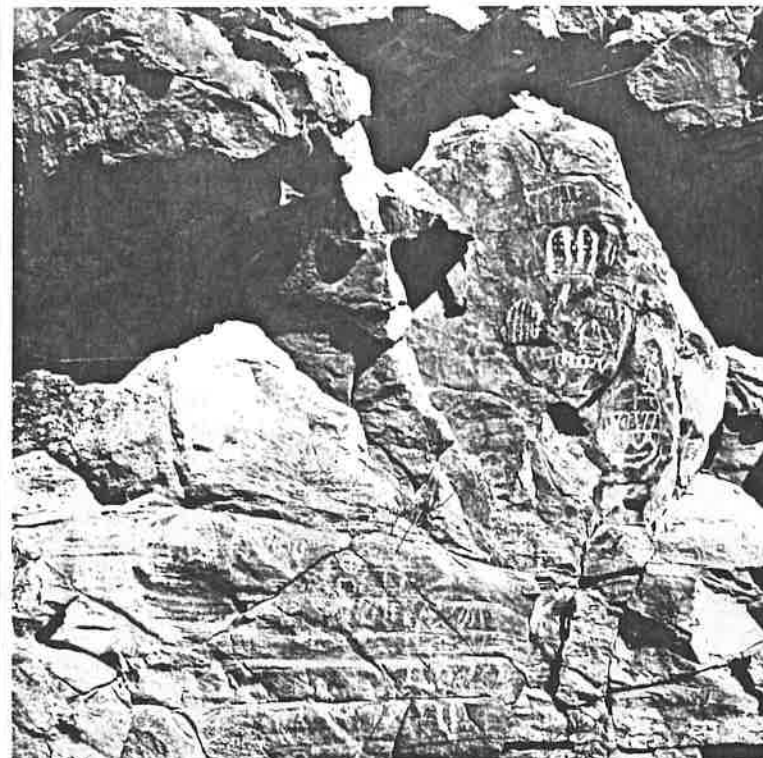
TO ENJOY THIS PLANT, ONE MUST VISIT IT WHERE IT HAS CHOSEN TO LIVE. THE LAND IT IS ADAPTED TO CAN BE VERY COLD AND VERY HOT. IT IS A HARSH LAND. ALTHOUGH I HAVE SEEN LARGE SOLITARY SPECIMENS IN JOSHUA TREE, THE POLYCEPHALUS WE SAW AT THE BASE OF THE CLARKS WERE ALL CLUSTERING AS USUAL. BUT ONE LOCALITY HAD MOSTLY SMALL SPECIMENS, CLUSTERING WHEN VERY YOUNG. THESE WERE SMALLER THAN THE FINE PLANT SHOWN WITH LARRY IN THIS PHOTO BY JIM HANNA.

THE EAST MOJAVE, WHICH INCLUDES THE CLARK AND NEW YORK MOUNTAINS AND WHICH ALSO INCLUDES THE UPPER PARTS OF JOSHUA TREE, IS CONSIDERABLY COOLER THAN THE LOW DESERT. DEPENDING ON THE ELEVATION, YOU WILL FIND JOSHUA TREES, ASSORTED CHOLLA AND OTHER OPUNTIAS, MAMMILLARIA TETRANCISTRA, CORYPHANTHA DESERTII, FEROCACTUS ACANTHODES, AND OTHER GEMS BESIDES THE WONDERFUL POLYCEPHALUS. ADD THE WILDFLOWERS, THE ROCKS AND SLOPES, AND YOU ARE VISITING A SPLENDID AND COLORFUL GARDEN SHAPED BY SUN, WATER, THE ABSENCE OF WATER, WIND, AND, ORIGINALLY, THE FIRE INSIDE THE EARTH.



IMAGES & RECORDS
ON STONE & FILM...

IN THE PHOTO BELOW WE SEE MODERN MAN RECORDING WITH HIS CAMERA A PARTICULARLY BRILLIANTLY SPINED YOUNG FEROCACTUS ACANTHODES WHILE TO THE LEFT ARE RECORDS OF ANOTHER SORT. ETCHED IN ROCK, THESE PETROGLYPHS MAY CONTAIN SOME OLD AND SOME NOT-SO-OLD REPRESENTATIONS OF.....WHAT!? ANOTHER KIND OF RECORD - FOR GEOLOGISTS & OTHERS WHO UNDERSTAND WHAT ROCKS SAY - IS ETCHED IN THE STONE SURROUNDING THE ESPECIALLY LONG-SPINED ECHINOCACTUS TRIGLOCHIDIATUS VAR. MOJAVENSIS PICTURED TO THE LEFT. WHETHER THE LINES AND INDENTATIONS ON THIS ROCK REPRESENT A MATERIAL WHICH HAS ERODED AWAY OR SOMETHING ELSE, I DON'T KNOW. PETROGLYPH PHOTO IS BY JIM HANNA, AND PHOTO OF JIM & OTHER PHOTOS ON THESE TWO PAGES ARE BY CAROL WUJCIK.

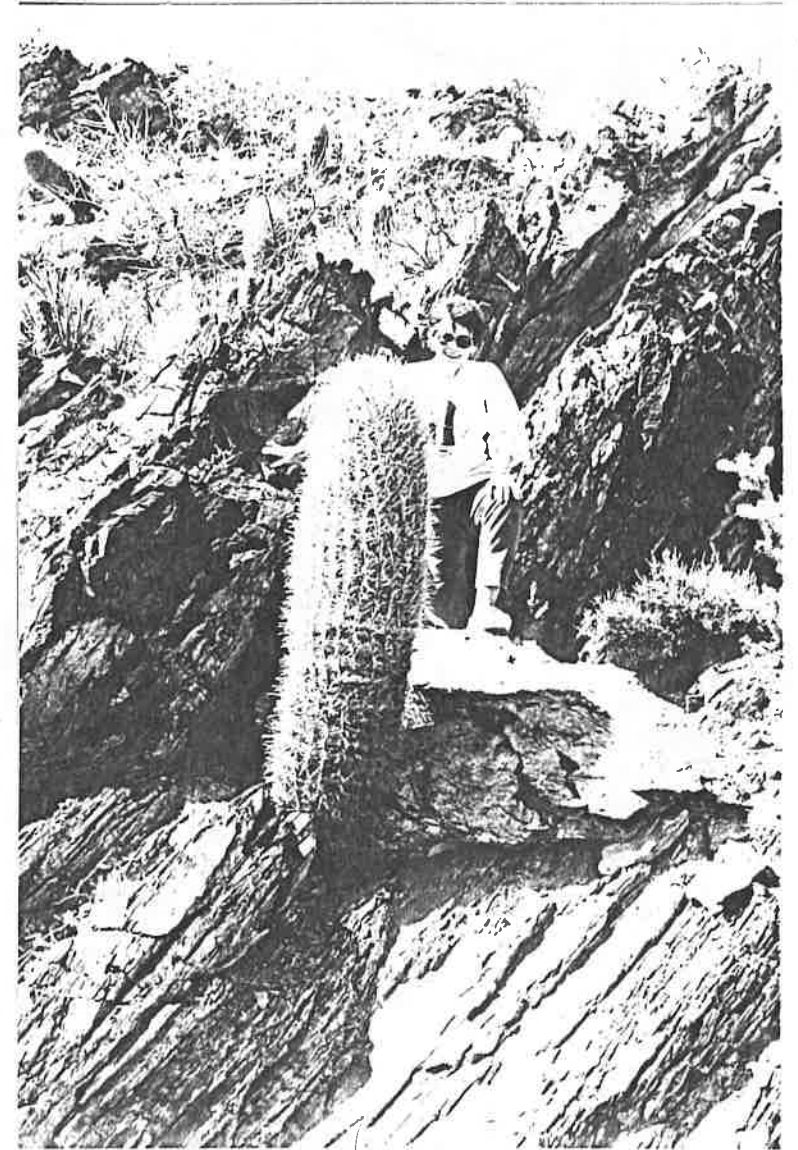


WHITHER GOEST THE ROADRUNNERS? TO SEE WONDERFUL THINGS! TO PHOTOGRAPH THEM AND WONDER AT THEM! PICTURED ABOVE ARE LAVERNE PITZER, LARRY GRAMMER, JIM HANNA, JOE WUJCIK, & CLEM GOEWERT. ALSO SHOWN ARE TWO MAPS AND ONE CAMERA - INDISPENSABLE ITEMS! THE DRAWING BELOW OF TED TAYLOR (ALIAS THE JOSHUA TREE KID) AND CAMERA PICTURES HIM FACE TO FACE WITH A CACTUS WITH LIGHT METER IN HAND JUST BEFORE PHOTOGRAPHING IT. IN THESE DAYS OF BUILT-IN LIGHT METERS, YOUR EDITOR AT FIRST THOUGHT IT WAS A MAGNIFIER TED WAS HOLDING IN HIS HAND! THE DRAWING NICELY MIRRORS JIM PHOTOGRAPHING A FEROC. IN HABITAT. THE DRAWING, OR SILHOUETTE, OF TED WAS FOUND IN A USED BOOK BY CHUCK & JERRY OF RAINBOW GARDENS & SENT TO US. TED SAYS THE SILHOUETTE WAS ORIGINALLY USED ON A CHRISTMAS CARD! THANKS TO RAINBOW FOR SENDING IT ON!





CACTOPHILES IN HABITAT!: Pictured from left to right are Jim Hanna with *Ferocactus acanthodes*, below is Terry Goewert and *Echinocactus polycephalus* and to the right is Roberta Hanna with golden Fero.!



THE FEROCACTUS ACANTHODES YOU SEE PICTURED WITH JIM AND ROBERTA MAY BOTH BE VARIETY LECONTEI. THERE IS SUPPOSED TO BE SOME SLIGHT DIFFERENCE IN SPINATION, THOUGH NOT COLOR OF SPINES. BUT I DO NOT YET KNOW HOW TO TELL THE DIFFERENCE. THE FEROC. WITH JIM WAS A FINE SPECIMEN AT THE BASE OF CLARK MOUNTAIN. (ASK JIM ABOUT HIS MEETING WITH A RATTLER NOT TOO FAR FROM THIS CACTUS!) THE ECHINOCACTUS POLYCEPHALUS WAS ALSO NOT FAR FROM THE FEROC. ACANTHODES PICTURED WITH JIM. THE FEROC. WITH ROBERTA HOWEVER WAS AT TOP OF OUR STONEY ROAD UP THE MOUNTAIN! IT AND MANY OTHER GOLDEN BARRELS WERE OUR FIRST REWARD FOR THE ASCENT. THEY WERE INCREDIBLY BEAUTIFUL SHINING IN THE SUN AND PERCHED ON THE CLIFF.

THE SIGHT OF ALL THESE GOLDEN BARRELS TOGETHER WAS AWESOME! SO AWESOME YOUR EDITOR COULD BE HEARD MURMURING OVER & OVER: "JASON FOUND THE GOLDEN FLEECE!..... WE FOUND THE GOLDEN FLEECE!" AND WE SAW MORE! WE SAW PETROGLYPHS AND A MOON OVER TOWERING CLIFFS WITH THE SUN STILL SHINING, AND FROM THOSE CLIFFS WERE HANGING GARDENS OF OPUNTIAS, AND EVERYWHERE WERE WONDERFUL THINGS! IT WAS AN UNFORGETTABLE EXPERIENCE - AN ALMOST OVERWHELMING GIFT!

J.W.Krutch on talking to frogs or mountains or flowers: "The plants and animals to whom I issue such bits of conversational small change are not any more interested or impressed than the people to whom one says the same things, but neither are they much less so. And in both cases the purpose achieved is much the same. I have noticed them; sometimes they have noticed me; and I am reminded of something which a certain kind of person is rather prone to forget -- that there are other creatures in the world beside himself."



LARRY SUGGESTED THAT THE ROCKY AREA PICTURED ABOVE LOOKS LIKE A STAGE, AND THAT IT WOULD MAKE A GOOD PHOTO. A STAGE OF COURSE NEEDS A PLAYER, SO WE SEE LARRY AND A FINE GROUP OF YUCCAS ON CENTER STAGE. WHICH SPECIES OF YUCCA YOU ASK? WELL, IT'S LOW-GROWING AND PREVALENT IN THIS AREA OF THE NEW YORK MOUNTAINS. DOES ANYBODY KNOW WHICH SPECIES IT IS?

Some spoke of our land.
 But I thought of a poor earth,
 people of dust and light,
 a street and a wall
 and a silent man up against the wall.
 And those stones in the clear upland sun
 and light standing naked in the river...
 forgotten things that feed my memory,
 irrelevant things, not summoned up,
 dreams of a dream, those sudden presences
 with which time tells us that we have no being,
 that time is the one who remembers and who dreams.
 There is no country, there is earth and its images,
 dust and light living in time...

— Octavio Paz

TO THE RIGHT IS JOE WUJCIK SMILING IN DELIGHT AT A WONDERFUL DISCOVERY. IT MAY EVEN HAVE BEEN THIS CORYPHANTHA DESERTII - THE ONLY ONE FOUND IN BLOOM, THOUGH SEVERAL OTHERS WERE IN BUD. THE COLOR OF THE FLOWER WAS A SOFT ORANGE.

WE FOUND THIS CORY. IN WHAT APPEARED TO BE SEVERAL FORMS. ONE MAY HAVE BEEN A JUVENILE FORM, ANOTHER WAS PROBABLY ONLY A FORM WITH SLIGHTLY DIFFERENT SPINATION AS TO COLOR.

THESE PLANTS CAN ONLY BE PHOTOGRAPHED AND NOT COLLECTED, WHICH IS A GOOD THING WHEN YOU THINK ABOUT IT IF ONLY BECAUSE MOST OF US DON'T HAVE ROOM FOR MUCH MORE THAN PHOTOGRAPHS --!!!! (EXCEPT OF COURSE FOR THE MAY MADNESS RAFFLE PLANTS -- BUT ROOM FOR THESE WILL COME FROM THOSE PLANTS WE DONATE FOR THE RAFFLE! AND THE RAFFLE IS THIS SUNDAY!)



"What we should like to do — though it might blast us if we did — is to realize the sum of the earth's energy and joy. The most we can usually do is to participate in the opening of one flower or in a rabbit's running of his race. There is too much beauty and too much joy for us to take in. Any man really capable of what at moments he feels himself on the brink of would be conscious of everything going on in the universe. He would be both flying with the eagle and growing with the grass."

— Joseph Wood Krutch

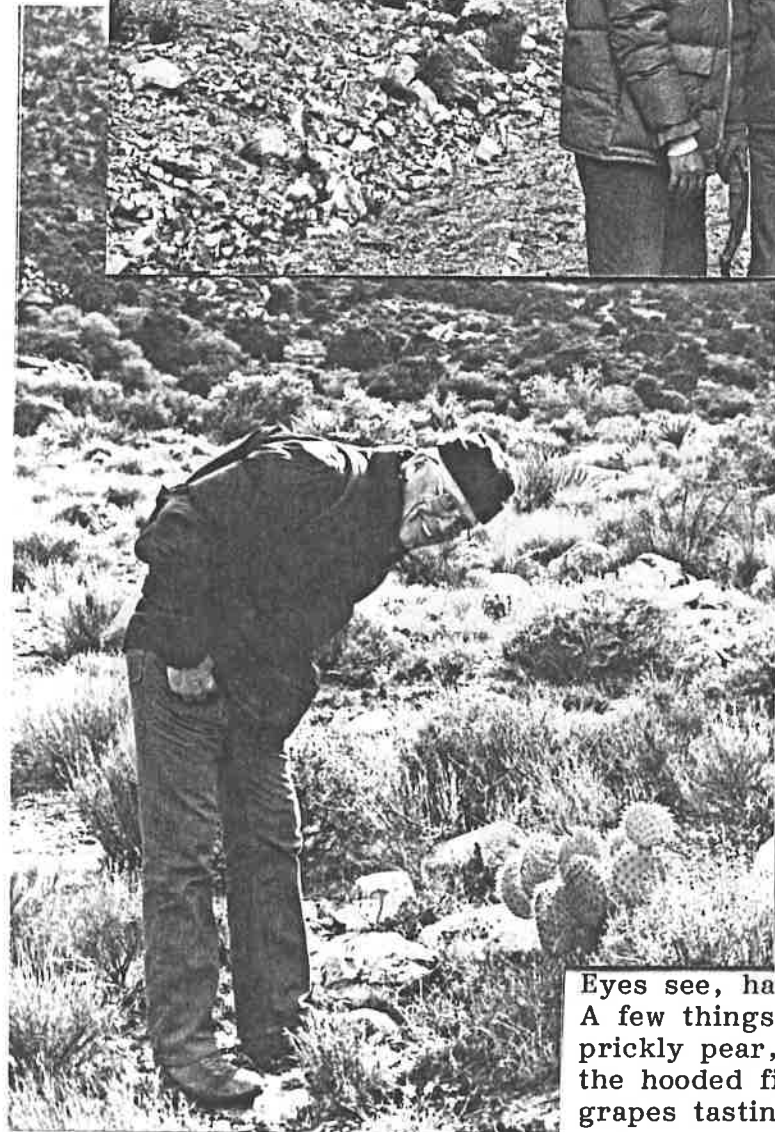


PHOTO ABOVE IS OF ROBERTA AND JIM HANNA IN THE NEW YORK MOUNTAINS. AND TO THE LEFT IS REED PITZER ADMIRING OPUNTIAS. THE YOUNG OPUNTIA CHLOROTICA APPEARS TO BE LOOKING BACK. THIS OPUNTIA OF THE HIGH DESERT IS ONE OF THE MOST ATTRACTIVE WITH VERY ROUND PADS EDGED WITH GOLD. HOWEVER, WE WEREN'T ABLE TO IDENTIFY ALL THE OPUNTIAS ON THIS TRIP - MANY COULD HAVE BEEN SIMPLY FORMS OF THIS OR OTHER SPECIES. STILL OTHERS COULD HAVE BEEN FELLED BY FIRE - YET STILL THEY SURVIVED. O. CHLOROTICA CAN BECOME ALMOST A LITTLE TREE WITH A SHAGGY TRUNK, BUT WE SAW FEW LARGE PLANTS IN THE LOCALES WE VISITED. OTHER BEAUTIFUL OPUNTIAS WERE O. BASILARIS, THE BEAVERTAIL, AND O. ERINACEA VAR. ?????? PROBABLY URSINA AND VAR. ERINACEA.

PHOTOS THIS PAGE & NEXT ARE BY CAROL WUJCIK. JOE AND GLOCHID THE WONDER CAR WITH CLARK MTN. BEHIND THEM IS PICTURED TO THE RIGHT. ABOVE RIGHT PHOTO WAS TAKEN AS WE DROVE DOWN THE MTN.!

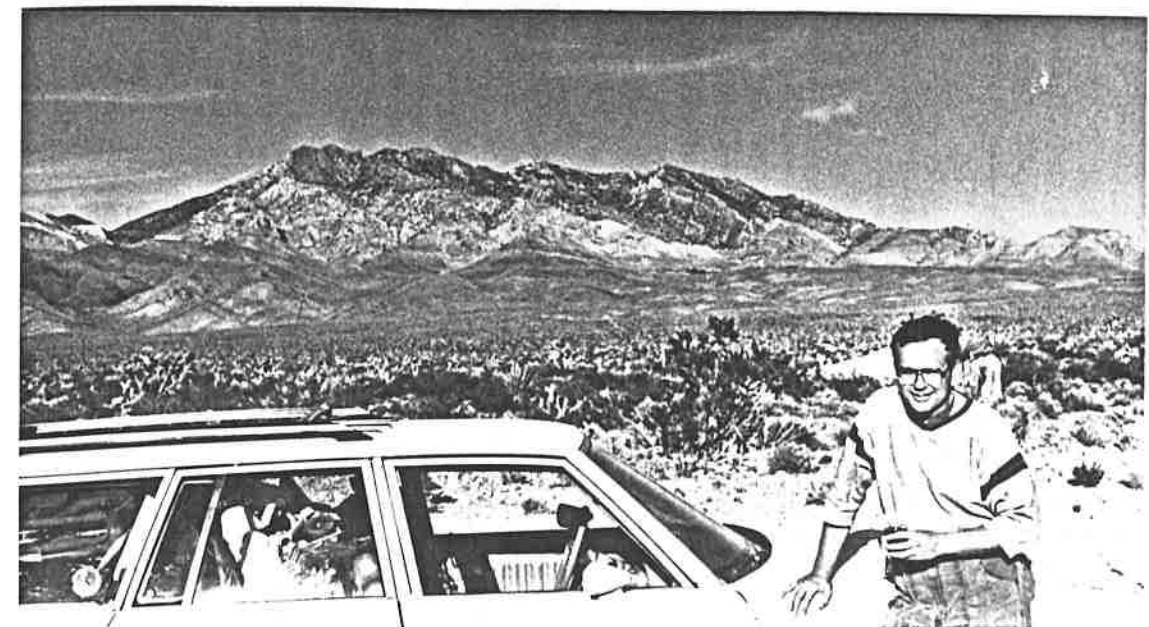
Eyes see, hands touch.
A few things are enough:
prickly pear, the coral and thorny planet,
the hooded figs,
grapes tasting of resurrection...

- Octavio Paz



"The road," said Cervantes, "is always better than the inn" and discovering is more fun than catching up with what has been discovered.

- J.W.K.

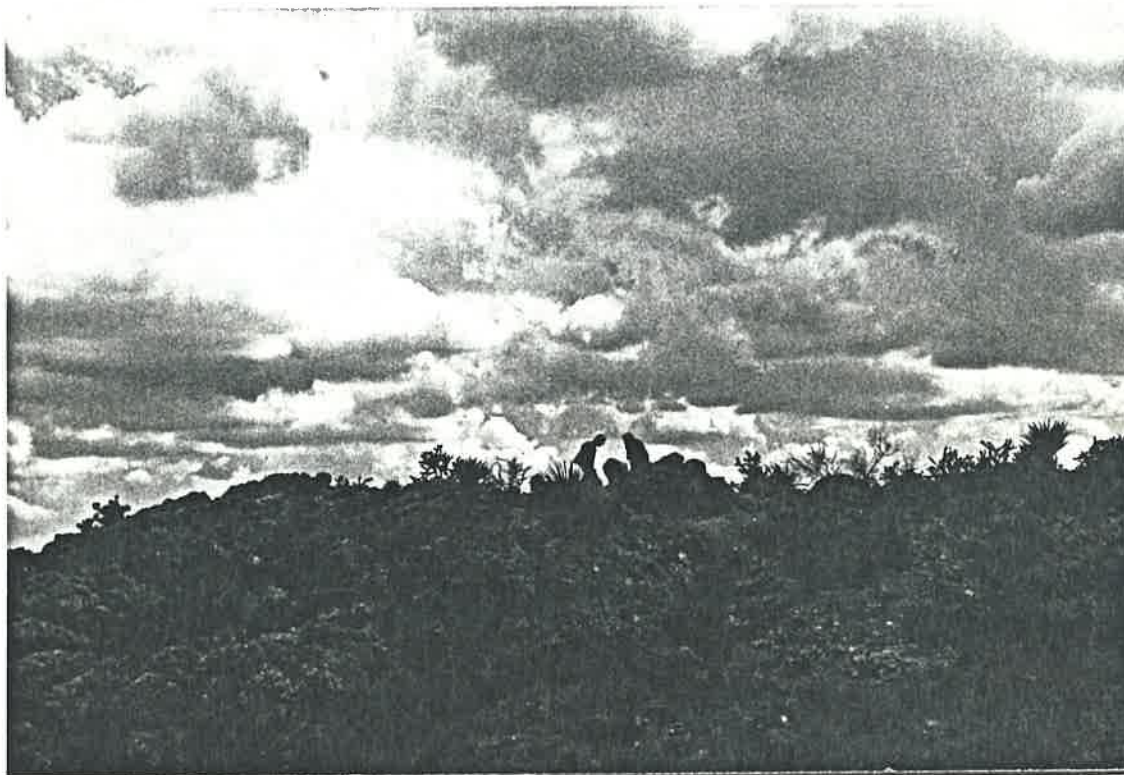


"Not to have known -
as most men have not -
either the mountain or the desert
is not to have known one's self.
Not to have known one's self
is to have known no one..."

- J.W.K.

PHOTO BELOW WAS TAKEN BY CAROL WUJCIK AT OUR FIRST STOP IN THE EAST MOJAVE SCENIC AREA, EN ROUTE TO THE NEW YORK MOUNTAINS. ROBERTA HANNA HAD JUST DISCOVERED ANOTHER MINIATURE MAMMILLARIA TETRANCISTRA TUCKED UNDER A ROCK ON TOP OF A HILL. THE LITTLE PLANT HAD TO BE SEEN AND PHOTOGRAPHED AND ADMIRERED! BUT THIS PICTURE OF DISCOVERERS SILHOUETTED AGAINST THE WESTERN SKY COULD REPRESENT ALL SEEKERS WHO SHARE A LOVE OF THE DESERT.

CLARK MOUNTAIN IN THE EAST MOJAVE:
IT'S CLOSE TO MT. WHITNEY - THE
HIGHEST POINT IN THE UNITED STATES
(NOT COUNTING ALASKA!) AND IT'S
CLOSE TO THE LOWEST POINT IN THE
UNITED STATES - DEATH VALLEY!



"The hardest (irrefutable) facts, as Havelock Ellis once remarked, are the facts of emotion. Joy and love, for example, cannot be doubted when one feels them. I know that they existed in me and for me when I heard the first peepers of spring and when I watched spring turn to summer. I cannot regret that I did so. I hope that whether the rest of the world is headed toward success or failure in its largest enterprises, I shall be permitted to watch with equal satisfaction at least one spring come again."

- Joseph Wood Krutch

NEWS OF AND FOR LBCC MEMBERS

GOOD NEWS! Mildred Titmus wants everyone to know her phone has been repaired. She says hello to everyone and plans to visit the area next month. Meanwhile she'd love to hear from her friends!

BELOW IS INFORMATION FOR OUR MEMBERS FROM THE SAN GABRIEL VALLEY CACTUS AND SUCCULENT SOCIETY'S COMMUNIQUE EDITED BY VIRGINIA SHAMBEAU WITH FRED HUTFLESZ.

Mid-America Regional Conference an outgrowth of the Omaha Picnic held in 1985, is scheduled for June 17-18-19 at the Airport Inn, Des Moines, Iowa. Speakers for this event include two of our members, Seymour Linden and Woody Minnich, also John Donald of Rebutia fame, Frank Bowman formerly of the Brooklyn Botanical Garden, Dr. C. Nixon, founder, editor and publisher of the Sempervivum Fanciers Association Newsletter and Neal Bohlman, President of the Henry Shaw C&SS. Further information may be obtained from the Registrar, Laura Gray, 2420 Reynolds Lane, Des Moines, Iowa 50317. The fee of \$30.00 includes attendance at all meetings (including the ones given by Woody and Seymour) as well as the noon meal on Saturday. Sounds like a fun and informative weekend.

1988 CSSA Show & Sales in the Ayers Hall at the Arboretum, Wednesday June 29 thru Sunday, July 3. Set up time is 9AM to 10PM, June 29 and 9AM to 5PM, June 30. Judging starts at 6PM on Thursday, June 30. A pre-sale at 6PM on Thursday, June 30. Show and sales 9AM to 4:30PM, Friday, Saturday and Sunday, July 1, 2, 3. Take-down 5PM, Sunday, July 3. Help is always needed and appreciated in the show and sale areas. Sign-up sheets will be available at the next two meetings.

Annual CSSA Meeting and Program is scheduled at 5:15PM on Saturday, July 2 at the "downstairs" Lecture Hall at the Arboretum. The featured speaker is Dr. Gerald Barad, Vice-President of the CSSA. Active in several plant societies and in the cause of conservation, Dr. Barad has a fantastically fascinating program consisting of slides which appear as if they were taken from inside the flower. While he has not mastered the ability to shrink himself small enough to fit inside the flower, his ability to take such detailed slides will be revealed to those who wish to attend his program. All are invited and it's free.

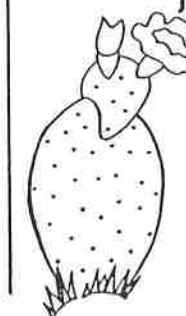
BUS TRIP TO THE SAN DIEGO C. & S SOCIETY SHOW & SALE
FIELD TRIP CHAIRMAN BILL HAGBLOM HAS ARRANGED FOR OUR MEMBERS WHO WISH TO, TO JOIN THE SAN GABRIEL SOCIETY ON ITS BUS TRIP TO THE SAN DIEGO SHOW...IF THERE IS SPACE ON THE BUS. THE BUS DEPARTS FROM THE LA ARBORETUM PARKING LOT SUNDAY JUNE 5 PROMPTLY AT 8 AM FROM THE NORTH END OF THE LOT. BRING A SACK LUNCH OR USE VENDORS IN THE PARK. WHILE YOU ARE IN BALBOA PARK, THERE WILL BE MANY OTHER BUILDINGS TO VISIT SHOULD YOU BE ABLE TO TEAR YOURSELF AWAY FROM THE CACTUS SHOW. RETURN TO THE ARBORETUM BY 6PM. FOR NON-SAN GABRIEL MEMBERS PRICE FOR BUS TRIP (OVER \$10) AND TO SEE IF THERE'S ROOM, PLEASE CALL FRED HUTFLESZ, 818-572-5583 OR 213-667-3411.

GOOD HOME NEEDED!

ADORABLE LITTLE FEMALE DOG NEEDS A HOME! CURRENTLY BEFRIENDED BY LARRY GRAMMER, WHO DESCRIBES HER AS LOOKING LIKE A LITTLE RED FOX, THIS YOUNG TWO-YEAR-OLD DOG IS SWEET TEMPERED AND AFFECTIONATE AND WOULD MAKE A FINE COMPANION. FOR MORE INFORMATION CALL LARRY AT 213-599-0856.

*South Coast Cactus
and
Succulent Society*

16 TH ANNUAL SHOW & SALE
JUNE 11 & 12



INFO. EVE. 213
679-6021



Entries accepted Friday, June 10 3:00 to 9:00 PM
Show open Saturday, June 11, 12:00 AM to 4:30 PM
Sunday, June 12, 9:00 AM to 4:30 PM
Sale open Saturday, June 11, 9:00 AM to 4:30 PM
Sunday, June 12, 9:00 AM to 4:30 PM

*South Coast Botanic Gardens
26300 Crenshaw Boulevard
Palos Verdes Peninsula*

CALENDAR

May 1988							June 1988						
S	M	T	W	T	F	S	S	M	T	W	T	F	S
1	2	3	4	5	6	7	1	2	3	4	5	6	7
8	9	10	11	12	13	14	8	9	10	11	12	13	14
15	16	17	18	19	20	21	15	16	17	18	19	20	21
22	23	24	25	26	27	28	22	23	24	25	26	27	28
29	30	31					29	30					

Day, round day,
luminous orange with twenty-four
sections,
all saturated with one single yellow
sweetness.

Octavio Paz

AS YOU RUSH MADLY FROM EVENT TO EVENT LISTED BELOW, REMEMBER WHAT THE POET OCTAVIO PAZ SAYS - THAT YOU SHOULD SAVOR THE SWEETNESS OF LIFE EACH HOUR OF THE DAY. (Easier said than done of course!)

MAY 22, SUNDAY - LBCC REGULAR MEETING FEATURING JOE CLEMENTS' TALK ON CAUDICIFORMS AND MAY MADNESS PLANT RAFFLE. 1:00 PM AT THE LIBRARY.

MAY 21-22 - THE GATES C & S SOC. SHOW & SALE, SAN BERNARDINO COUNTY MUSEUM, 2024 ORANGE TREE LANE, REDLANDS - FROM 1 - 5 PM.

MAY 30 - MONDAY - MEMORIAL DAY

JUNE 4 & 5 - THE SAN DIEGO C & S SOCIETY SHOW & SALE, MAJORCA ROOM (101), CASA DEL PRADO, BALBOA PARK, SAN DIEGO, CA. IF YOU WOULD LIKE TO JOIN THE SAN GABRIEL VALLEY SOCIETY BUS TRIP, SEE INFO. INSIDE BACK COVER OF THIS NEWSLETTER.

JUNE 11-12 - SOUTH COAST C & S SOC. SHOW & SALE AT THE SOUTH COAST BOTANIC GARDEN. SEE INSIDE BACK COVER FOR MORE INFO. THIS IS AN OPEN SHOW - ALL MAY ENTER THE COMPETITION WHETHER A MEMBER OR NOT.

JUNE 14 - FLAG DAY AND JUNE 19 - FATHER'S DAY.

JUNE 17 - 19 - 2ND MID-AMERICA REGIONAL CONFERENCE IN DES MOINES, IOWA. MORE INFO. INSIDE.

JULY 1 - 3 - THE NATIONAL SOCIETY (CSSA) C & S SOC. SHOW & SALE AT THE LA ARBORETUM. MORE INFO. NEXT MONTH.

JULY 2 - SAT. EVENING - CSSA ANNUAL MEETING 7:30 FOLLOWED BY PROGRAM WITH NOTED SPEAKER. MORE INFO. NEXT MONTH.

THE CACTUS COMPANION

Newsletter of the Long Beach Cactus Club

10860 El Mar Avenue

Fountain Valley, CA 92708



* IT'S TIME FOR CAUDICIFORMS AND
* THE MAY MADNESS PLANT RAFFLE