

# Newsletter

NOVEMBER

1989

THE CACTUS COMPANION

NEWSLETTER OF THE LONG BEACH CACTUS CLUB  
ROADRUNNERS

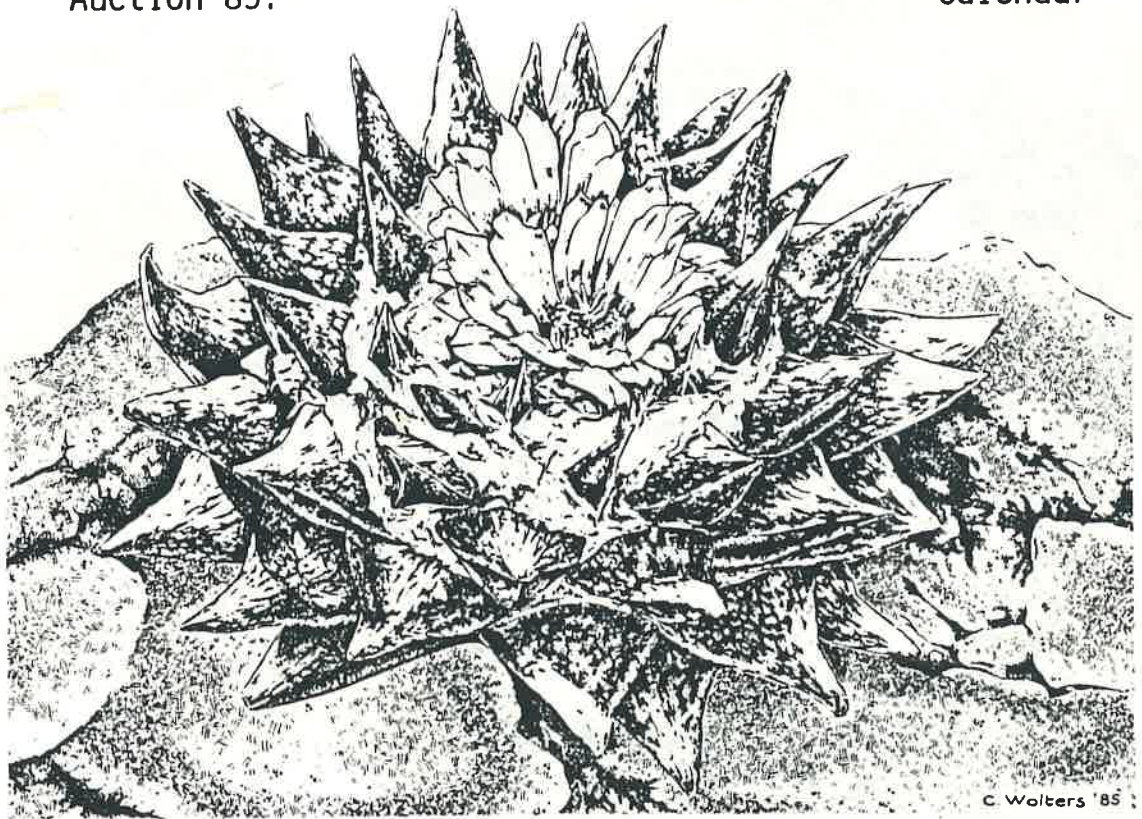
CONTENTS: Meeting Sunday, Nov. 26  
featuring Victor Turecek!

Slate of Officers for 1990

Renewal Forms

Auction 89!

Cactus Culture in Nov.  
Roadrunner News  
Calendar



**Ariocarpus retusus**

# 1989 Officers

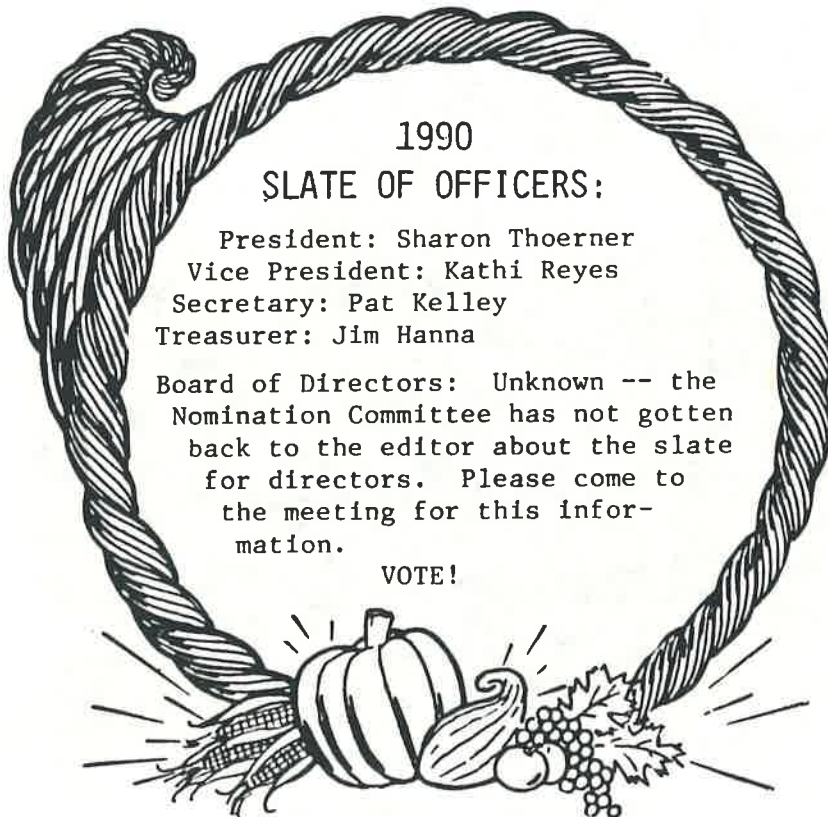
President Rowena Thompson 213-835-0393; VP Kathi Reyes 213-591-7330; Secretary Pat Kelley 213-639-6439; Treasurer Jim Hanna 213-920-3046; Board Members: Eleanor Barker, Larry Grammer, Bill Hagblom, Laverne Pitzer, Ted Taylor, and Audrey Tucker.

from the South Coast Nov. Newsletter:

## CACTUS & SUCCULENT SALE!

Sunday November 19, 9:00 - 4:30 PM, at Eleanor Barker's home, 3602 West 157th St., Lawndale, CA 90260. If rain, no sale -- call for new time. Phone: 213-679-3506. See map you received at the auction. That earlier sale was rained out.

\*\*\*\*\*



### 1990 SLATE OF OFFICERS:

President: Sharon Thoerner  
Vice President: Kathi Reyes  
Secretary: Pat Kelley  
Treasurer: Jim Hanna

Board of Directors: Unknown -- the Nomination Committee has not gotten back to the editor about the slate for directors. Please come to the meeting for this information.

VOTE!

### VERY BRIEF EDITORIAL: VOTE! 2 ELECTIONS!

Vote in our LBCC election, and if you are a CSSA member, make sure you have received your ballot (1 per CSSA member in a household).

COVER DRAWING by the talented CARLA WOLTERS for the BRITISH C & S JOURNAL, Dec. 1987, p. 105.

# NOVEMBER



## PROGRAM: THE MOST RECENT ADVENTURES OF VICTOR TURECEK!

Come let the man "who never stops dancing" tell you about his latest trip to his beloved Argentina. Did he possibly see any Gymnos?

REFRESHMENTS: Everyone!

### PLANTS OF THE MONTH:

Cactus - Gymnocalycium & Ariocarpus  
Succulent - Tylecodon & Othonna  
Classes for novice & advanced  
BRAGGING TABLE, SALES, PRIZES: YES!



MEETING, Sunday Nov, 26 at 1:00 PM, Iacoboni Library Community Room, 5020 Clark Ave., Lakewood.

Below you see Victor in action -- brandishing a tomahawk while auctioneering, and with an Opuntia pad in his bare hand about to participate in the Opuntia toss! Both these feats were at the '88 San Gabriel picnic, but he has outdone himself auctioneering this year -- plus he has again spent the summer in Argentina --adventuring!!!!

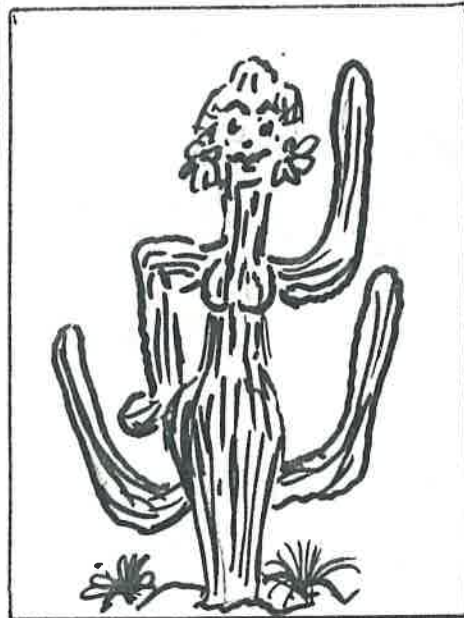
## AND NOW FOR SOMETHING COMPLETELY DIFFERENT!

### DID YOU KNOW

That the LBCC Two-Wheeled Roadrunner rolled into -- no, over, -- no, attempted to avoid droves of woolly worms inching their way across Sand Canyon Road in Irvine on Sat. Oct. 28, presumably to get to the other side -- ha ha -- but why? What does this portend? A sign of a cold winter to come? What's more they all appeared to be GOING IN ONE DIRECTION! They were crossing from the military base into civilian land. Could they be secret weapons? Mutants? Or just tired of K Rations and hoping the grass really is greener...etc.? He who witnessed the exodus reports that this happens every year, and that it may be possible that woolly worms actually are crossing from the other side, but never quite make it across all lanes. But those the Two-Wheeled Roadrunner tries frantically to avoid when wheelin' along are all going in one direction. A woolly worm mystery...

### ALSO, DID YOU KNOW

That only one weekend earlier, a foursome of Roadrunners ran down to Tucson to check out the cacti and succulents at various nurseries; and that somehow, through a complicated set of circumstances having to do with stormy weather late Saturday, the four found themselves, exhausted from the day, taking refuge in a local establishment of the topless kind, where, fortified with strong drink, they observed with great amazement Homo sapiens variety mostlynudum forma mammillarioides, but reported the evening a bust since, alas, there were no cacti to be seen. Nevertheless, although the four were disconsolate, they were at least pleased to be able to report upon this interesting new hybrid life form, drawn here for us (from verbal description) by Frankie Sedillo, not yet a Roadrunner, but one day...



### AND FINALLY, DID YOU KNOW

That there is a man we all know, and even revere, who although not a Roadrunner, has been a longtime friend of the LBCC, and who, it has been revealed, has an alias one would never have guessed -- that of Popsie! Which proves once again that cactophiles are not only, well, different, but are worthy of, and can inspire great affection, as witnessed by the conferring of such a nickname!

## LONG BEACH CACTUS CLUB 1989 AUCTION

Once again our fall auction of noteworthy cacti and other succulents was a very special event. This year there were caudiciforms via Guy Wrinkle many of us had never seen before! These of course went for goodly amounts, but there were remarkable bargains available of other specimen plants of all kinds, and everything in-between.

This special section of the newsletter will recap some of the auction and provide a way of thanking all our bidders & sellers -- but especially several hardworking generous people. You will see many of them on this and the next few pages.

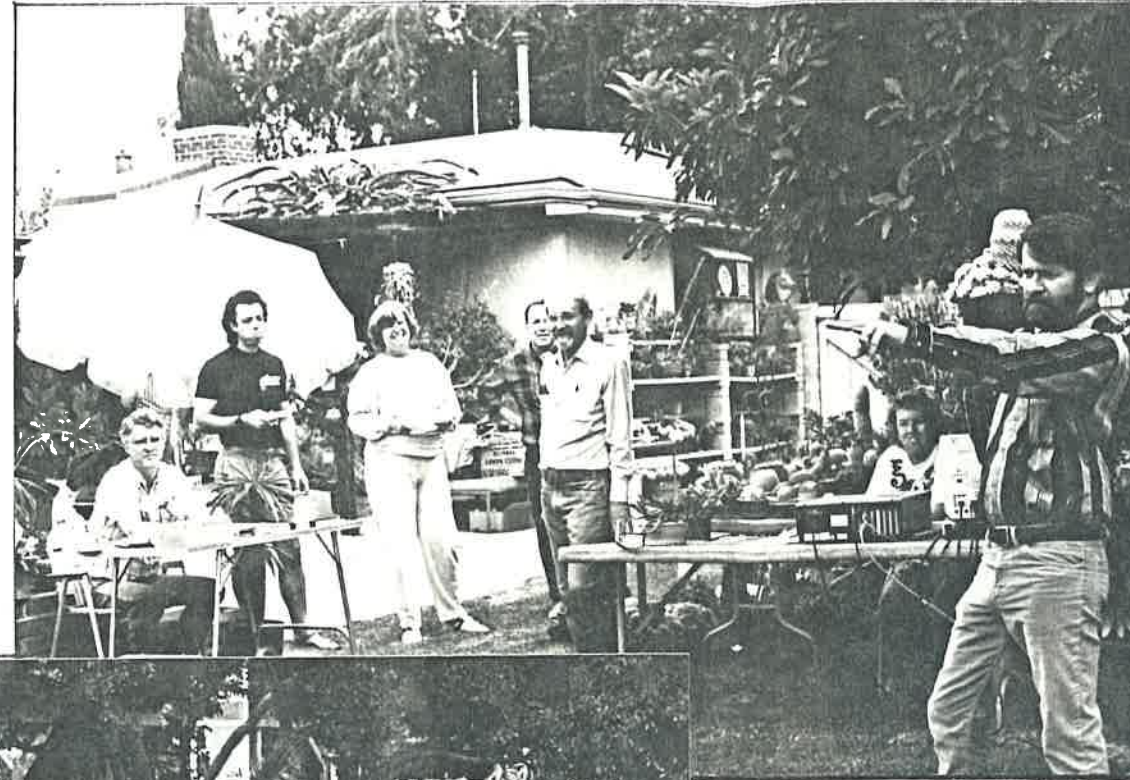
The Thoerners were again our gracious hosts, and their home and grounds are filled with the things they love. It's a unique garden, and from the street lamps to the geese who lose their heads over every auction, their garden is a delight!

In the photograph below is Lillian True (to the left), who donated many beautifully mounted Tillandsias, which many bidders will enjoy for years. Next to her with bidding # 26 is LBCC President Rowena Thompson, who spent considerable time & energy organizing this fundraiser. Bidder # 5 is Charles Spotts with wife Joann. They are enjoying the spirited bidding.



To the right are Treasurer Jim Hanna, Guy Wrinkle, Carol Loehman, plant logistics man Larry Grammer, fellow Auctioneer Victor Turecek, & computer whiz Sharon Thoerner who are all admiring Woody Minnich's classic auctioneering style!

Below we see (from left to right) Joan Gonzalez, Brigitte Williams, Ellen Low, Bill Low (who's talking to the Chicken-Who-Thinks-It's-a-Dog), Duke Benadom, Bill Hagblom, Khobe Reyes, & C.W. Elliott. who are among the engrossed & entertained bidders.

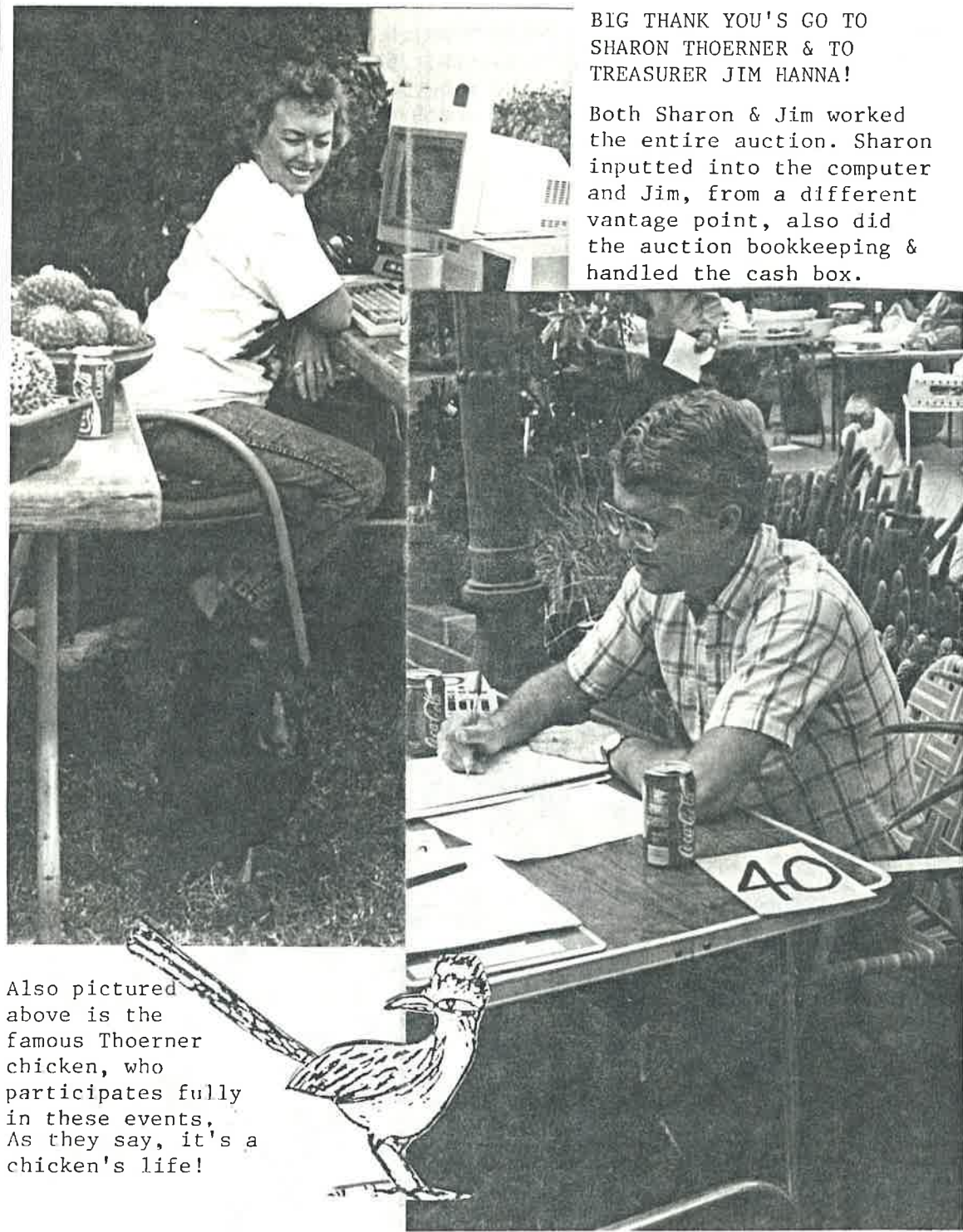


A word about the Thoerner chicken. This amazing fowl thinks it's a dog. It eats with the dogs, drinks out of the dogs' water bowl, and sleeps amidst them. It even goes from person to person, begging, like a dog. Although a handsome bird, its dark plumage makes it hard to photograph with other subjects like the real dogs. It's a pretty neat bird living in a pretty neat place!

Below, Woody Minnich tells the bidders that this Mammillaria, when it grows up, has the potential to grow soooooo tall, & maybe even win blue ribbons & trophies like its parental plant did.

In these photos of Woody & in the preceding photos of Victor "Tomahawk" Turecek, you can see the classic dynamic stance of the auctioneer. One hand cradles the plant while the other connects with the audience, or in some way enhances the acutioneer's words.





BIG THANK YOU'S GO TO SHARON THOERNER & TO TREASURER JIM HANNA!

Both Sharon & Jim worked the entire auction. Sharon inputted into the computer and Jim, from a different vantage point, also did the auction bookkeeping & handled the cash box.

Also pictured above is the famous Thoerner chicken, who participates fully in these events. As they say, it's a chicken's life!

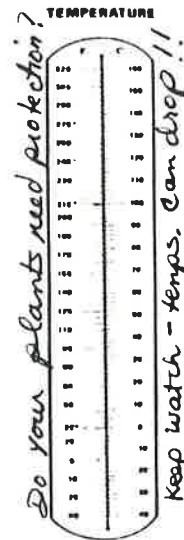


NOVEMBER - in Southern California *from Carol Wujcik*

It probably only seems this way, but November can sometimes be more cold, wet, and windy than other "winter" months. Perhaps it's only because this is the first really cold month in our area. but January & February bring frost warnings often enough.

Be aware of weather forecasts and frost warnings. Those of you with greenhouses have less to worry about, but those of you growing under the sky may have to take precautions to protect your babies.

1. By Oct. you should be hardening off your plants. Most should be growing very little except for the winter growers (like Tylecodon, some Aloes, some Crassulaceae, etc.). Some of your Ariocarpus may still flower, but they two should be getting ready for winter. If you always feed when you water, reduce the food, & of course reduce watering. How often to water will depend greatly on weather.
2. Some plants may need to be moved under the eaves next to the house, or perhaps even indoors. I find my plants do better outside. But I always hope the cold weather comes gradually & not all at once, so they can adjust. Given time to adjust, even many Euphorbias & such can take quite a bit of cold.
3. If there is a frost warning, it will be better if your succulents are dry. Other plants including vase type broms may be better watered. The water in the brom vase may freeze, but the heart of the plant will be protected. (Mother Nature likes preceding frost warnings with rain -- a problem for succulents.)
4. When there is a frost warning, the following takes place at the Wujciks:
  - a. Moaning & gnashing of teeth.
  - b. Old towels, rugs, etc. are tossed over favorite or vulnerable plants.
  - c. Some may be brought into the kitchen.



November - cold protection con't.

- d. The large circulating fan (on a 4 ft. stand) is positioned outdoors plus another fan. They are strategically placed to circulate air and hopefully keep frost from settling too heavily.
- e. Water is sometimes dribbled from hoses to try to flood some of the concrete to raise the temp. a degree or two & to prevent pipes from freezing. I am concerned however about water running under our slab foundation.
- f. Our big "smudge pot" -- actually it's technically a barbeque -- is on pilot safety which still heats the area a little.
- g. Some or all of the above may be started in the evening -- or sometimes I'll get up at 4 AM to listen to the Radio Shack "Weather Cube" though their last forecast is usually 11 PM. I also go outside to read the min-max thermometer. If there's only a few degrees to freezing, I go into action. Dawn is the coldest time of the "night" as most of you know.

Other info about cold is that water may freeze but what it cocoons will be a tiny bit warmer than freezing. This is why some growers use sprinklers on crop plants. In Florida I used this method on even a banana plant and it worked but you must continue sprinkling until all ice melts. Plus the weight of ice can cause problems. **YOU DO NOT WANT TO USE THIS METHOD ON SUCCULENTS OR BROMS** -- contact the Comm. of Agriculture to find out which plants this method may work on.

You would think windburn from fans might be a problem, but I have not found it so. Remember fans & towel covers etc. should stay on PAST DAWN AND AFTER THE TEMP STARTS TO CLIMB. Do not cover with metal, which conducts cold. Paper covers may blow off.



PHOTOGRAPHS BY  
KATHI REYES OF  
THE 1989 INTER-  
CITY SHOW BANQUET.

To the left, WOODY  
& TAMBRA MINNICH  
SHARE A SPECIAL  
MOMENT, and below  
DAPHNE & JOHN  
TRAGER ARRIVE FOR  
THE FESTIVITIES.

As you know, Woody is  
one of the Co-Chairman,  
and John's birthday was  
that very day, Aug. 19.



## ROADRUNNER NEWS

### MORE NOVEMBER SUGGESTIONS:

You may wish to give your plants a fall treat -- some iron chelate instead of your regular fertilizer. This may help loosen salts & assist rainwater in flushing out the soil. This tip comes from Rowena Thompson.

Just discovered in a Huntington Beach Nursery: Liquinox chelated iron & zinc. They are also marketing a B1 transplant product, and an azalea/camellia acid fertilizer. Also Liquinox GROW & Liquinox BLOOM are available. During the growing season, John Trager waters the Conservatory plants with a 50-50 combination of GROW & BLOOM. Regretably, it's sometimes difficult to find Liquinox brand on retail shelves. Call local nurseries to find it. (Orange County Farm Supply has not carried this product recently as far as I know).

Note: The above was typed in October when many plants are experiencing the fall growing season. Except for winter growers, your plants should be encouraged to go dormant so depending on your growing situation, cut back fertilizing.

The photo below is of the editor, thrilled that her Mammillaria schiedeana won best Mam. This plant was discovered in the wilds of Key Biscayne, Florida, at an art fair (appropriately!).



First, Linda Voelker reports some sad news. She writes, "Margary Ernst, a longtime member, past Vice President, and Show Chairman, died on Oct. 1, 1989. She was active in the Orange County and South Coast clubs in years past. She was a school teacher for the Santa Ana district for 35 years. Margary leaves a sister and many friends."

\*\*\*\*\*

As you know, Ed Gay has been ill and needed blood transfusions. One way to help would be to ask that blood donations you might be making be earmarked for the Granada Hills Community Hospital, Granada Hills in the name of Edward G. Gay. I'm sure this would be most helpful.

Also, it never hurts to keep those cards of good wishes coming. Write Ed at his home address, 5353 Topeka Dr., Tarzana, CA 91356 -- and good wishes to Betty too!

\*\*\*\*\*

Ted Taylor is doing well after his short hospital stay. Call him at 213-569-3368, and say hi!

\*\*\*\*\*

Your editor is also doing much better after being off work over a week with a severe muscle problem in the shoulder. Basic pain & agony!

\*\*\*\*\*

DOMINGUEZ ADOBE GARDEN: If you have specimen plants to donate (they do not have to be show worthy!) to the Garden, contact Bill Hagblom 714-538-6186 or at the meeting. Nice Echeveria or Crassula cuttings too.

\*\*\*\*\*

### WELCOME NEW MEMBERS!

Joan Gonzalez  
Juanita Gonzalez  
6612 Cleon Ave.  
N. Hollywood, CA 91606

Ann Gorman  
6439 Wexford Circle  
Citrus Heights  
CA 95621  
916-726-2680

Guy Wrinkle  
Exotic Plants  
11610 Addison St.  
N. Hollywood  
CA 91601  
818-766-3642

New Phone Number: Barbara Allen, 714-522-4178

New Address: Gerald Krulik, 22226 Summit Hill, El Toro, CA 92680  
Same phone #.

CALENDAR:

Nov. 19, Sun., C & S Sale, see inside front cover for info.

Nov. 23, Thurs., HAPPY THANKSGIVING ROADRUNNERS!

Nov. 26, Sun., 1:00 PM, LONG BEACH CACTUS CLUB featuring Victor Turecek's latest adventures in Argentina. Plants of the Month are Gymnocalycium, Ariocarpus, Tylecodon & Othonna.

DECEMBER LBCC HOLIDAY PARTY: NEW DATE: Dec. 17, Sunday, 1 week early so as not to conflict with Christmas.

POULTRY FEAST, INCLUDING TURKEY & HAM...GIFT EXCHANGE LIKE LAST YEAR...DECORATED PLANT COMPETITION...POM PRIZES...INDUCTION OF NEW OFFICERS...GIFT PLANT FROM CLUB FOR EARLY RENEWALS...AND WHO KNOWS WHAT ELSE?!

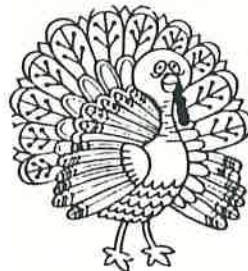
QUESTION: DO WE HAVE ROADRUNNERS WHO WOULD LIKE TO VOLUNTEER TO HOST THIS EVENT AT THEIR HOME? ALL FOOD, EVEN THE COFFEE, WILL BE PROVIDED BY CLUB.

January 7, 1990: LBCC BOARD MEETING TO GET THE CLUB OFF TO A ROISING START. WOULD ANYONE LIKE TO BE HOST?

DUES ARE DUE! RENEW! RENEWAL FORM WITHIN!!!!

The Cactus Companion  
Long Beach Cactus Club  
NEWSLETTER  
10860 El Mar Avenue  
Fountain Valley, CA 92708

FIRST CLASS  
FIRST CLASS  
FIRST CLASS



**Happy  
Thanksgiving**