

# THANK YOU

## LONG BEACH CACTUS CLUB

WHAT-A-SHOW NEWSLETTER!  
THE CACTUS COMPANION  
SEPTEMBER 1987

SEPTEMBER MEETING: Sept. 27  
Sunday, at 1:00 PM at the  
Jacoboni Library Community  
Room, 5020 Clark Avenue, in  
Lakewood (opposite the mall).

PROGRAM: The LONG BEACH CACTUS CLUB IS PROUD TO PRESENT AS THEIR SPEAKER, DAVID HARDY OF THE BOTANICAL RESEARCH INSTITUTE IN PRETORIA, SOUTH AFRICA. Although we don't yet know the title of his program, David Hardy knows a great deal about African succulents including Aloes. He was the keynote speaker at the Huntington Symposium scheduled to speak Saturday night, the 19th.

PLANTS OF THE MONTH: Blooming Euphorbias and  
Thelocactus

REFRESHMENTS: Again, anyone who can, bring finger foods. THANK YOU.

BRAGGING TABLE: Yes

PROMPTNESS & END OF MEETING PRIZES: Yes

BIRTHDAY PLANTS: Yes

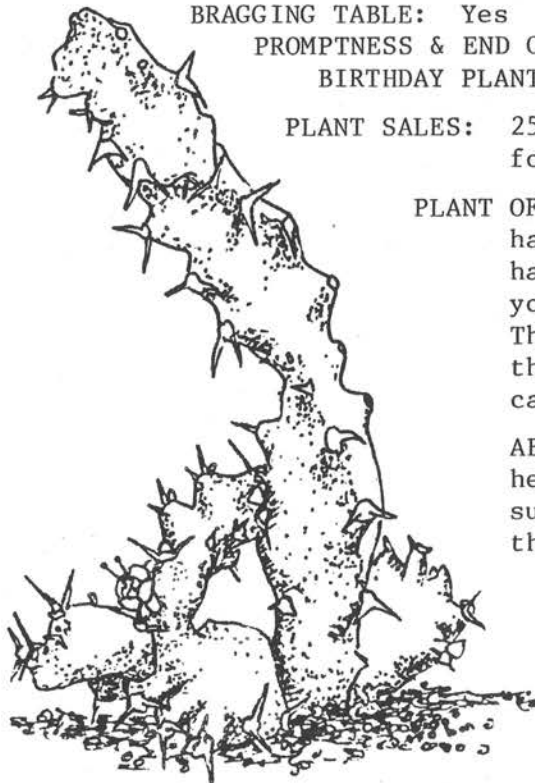
PLANT SALES: 25% to the Club, except for the speaker, for whom the 25% is waived.

PLANT OF THE MONTH HANDOUTS: We will try to have a Euphorbia handout and a Thelo. handout for everyone. The last time your editor looked, however, the genus Thelocactus had been changed a bit by the experts. But not to worry, if you call your plant a Thelocactus, bring it!

ABOUT THE PROGRAM: We can expect to hear the latest about the endangered succulents of Madagascar. We have heard there is reason for concern.

\* \* \* \* \*

DRAWING to the left is of Euphorbia squarrosa (Cape Province) & is from CSIE, no. 7, 1980. The Crassula teres on the back cover is from CSIE no. 5, 1978.



1987 OFFICERS

President.....Rowena Thompson, 835-0393
Vice-President.....Kathi Reyes, 591-7330
Secretary.....Pat Kelley, 639-6439
Treasurer.....Jim Hanna, 920-3046

Board Members: Eleanor Barker, Larry Grammer, Bill Hagblom, Laverne Pitzer, Audrey Tucker, and Ted Taylor.

Membership Chair: Marge Snyder, 639-1236 & Terry Dew, 429-2539

Programs: Audrey Tucker, 421-8175.....Show Chair: Larry Grammer, 599-0856

Refreshments: Rose Wey...Publicity, Laverne Pitzer...Librarian: D. Tucker,

We thank these and all the other chairmen for their support & hard work.

A full listing of the committee people is in our new roster. THANK YOU.

\*\*\*\*\*

PRESIDENT'S MESSAGE



Thank you to everybody for all the contributions you made in making the show a success.

I was so proud of our Long Beach workers. They really put forth a tremendous effort.

Thank you, thank you, thank you!

Rowena Thompson
President

\*\*\*\*\*

NAME BADGES: Treasurer Jim Hanna will be taking orders for personalized name badges at Sunday's meeting. Please print your name exactly as you'd like it to appear. Last year the price was \$4 pre-paid. Badges are green and white plastic and sport an Opuntia. (Please see the photo of Rowena, who is wearing her badge).

\*\*\*\*\*
NEXT MONTH'S NEWSLETTER - We have "rave" reviews of our show plus we'll have a list of winners. This list was not available in time for this edition, but will be available at the meeting. (And maybe the typewriter will be fixed - any word with "u" in it or a ":" goes blooey!)

\*\*\*\*\*

LBCC PHOTOGRAPHIC DISPLAY POSTER! To promote our Club, Khobe Reyes will help create a poster collage of photos & whatever! Do you have extras to give her? Bring them to this Sunday's meeting. We can use this at any event we participate in. Photos or items can be serious or silly.

\*\*\*\*\*
Newsletter Editor is Carol Wujcik, 10860 El Mar Avenue, Fountain Valley, CA 92708 (714) 963-3146.

Special Thanks

TO ALL OUR LONG BEACH CACTUS CLUB MEMBERS
FOR A WONDERFUL SHOW

FROM OUR SHOW CHAIRMAN LARRY GRAMMER:

Thank you for all the support from the members of all three clubs and all of our outside help. From our own LBCC members we had terrific support: Jim & Roberta Hanna did their normal 150% - Laverne did a remarkable job with publicity, & she and Reed worked very hard during setup & takedown - Terry Dew made beautiful artistic posters - it was good to see Lillian True with her plants - in fact thank you to ALL who entered (your editor hasn't room to list everyone!) - there were wonderful educational displays by members Khobe Reyes (lithops) & Virginia Martin (stamps & succulents) & of course Lit Phan - Bill Hagblom helped make the sales a success as did Ellen & Bill Low - there were those helping with judging and clerking and setup and takedown - Fred Hufflesz (also the show chair. for San Gabriel) did all the time-consuming bills & follow-up - Carol helped by creating the newsletter - Woody (also the chair. for the L.A. club, did so much, but the beautiful awards and plaques should be called to everyone's attention. Thank you to all the other Long Beach CC Roadrunners who helped!

For the other clubs, there were Sandy & Camille (& of course Burr!) Joe Clements & Jerry Clements, & Duke Benadom in Sales - House of Cactus put in a wonderful first-time display - the Gays donated not 1 but two awards (Best Chilean & Best Crest) & you already know about the awards given by Abbey Garden & Singers - Dave Grigsby & Madeline Lee brought beautiful plants, and people came north, south, and east to participate: Dorothy & Sam Williams & Ann Gorman & the Ed Hahns & Steve Southwell & Leo & Lillian Pickoff & Kyle & the Bogarts from Santa Barbara & all the others!

The beginners deserve special praise. The Thoerners did a fine job as did our other Roadrunners. Also the L.A. club, which is large, had fine participation in this important class.

Even though this thank you is lengthy, it's important because all these people made it happen. Finally a personal thank you. I accidentally left my entry tags at home, & Jim Hanna & Dorothy Williams helped me redo them all (about 90!)

Thank you! Larry

FROM OUR PUBLICITY CHAIRMAN LAVERNE PITZER:

Thank you for all the members who helped to put out the flyers and other publicity for the show. Thanks! Laverne

FROM YOUR EDITOR CAROL WUJCIK:

Thank you everyone for the honor you conferred upon me at the Awards Dinner. I feel even more like our members are a kind of family! Again, thanks! Carol

BOARD MEETING MINUTES: Our board meeting was last August 30, one week after the show. We will have some photos from this day in our next Newsletter. Below are the Minutes from our Secretary Pat Kelley. Pat has also submitted minutes for two regular meetings (June & July) and these will be reproduced and ready for you to pick up at this Sunday's meeting. In August of course there was no regular meeting due to the show. Thanks Pat for all the work!

From PAT KELLEY, SECRETARY

MINUTES OF THE L.B.C.C. BOARD MEETING 8-30-87

The meeting was called to order by Rowena at 1:25 with 8 in attendance. There were 2 late arrivals. Before, during, and after the meeting we enjoyed photos of the show. Great close-ups by Jim Hanna!

First was the report of the show by Larry Grammer. Larry thanked everyone for their help and participation and was thanked in return for all his hard work. He was also persuaded to be show chairman again next year. Larry reports there were 60 plus exhibitors with about 1900 entries counting exhibits. Rowena was the top salesperson. The total sales were over \$ . The profits are not clear yet as there are bills still pending. It will probably be \$ plus per club, plus expenses. Our furthest exhibitor came from approximately 450 miles away and we had people from Sacramento, Stockton and San Diego. Wide range!

Larry reports there will be a barbeque at Woody's on Sept. 26 at 5 PM for those who participated in the show in order to discuss next year's show and critique this one. Come and bring any suggestions for improvements, changes, etc. Come early if you wish to look at or buy nursery plants.

Rowena requested that Carol Wujcik do a write-up of the show for submission to the CSSA Journal. Laverne did such a fantastic job of publicity (even including a Chinese newspaper) that she was asked and agreed to do it again next year.

Ted Taylor moved and Carol seconded that we have our show with the other clubs next year again if they want us. Motion carried unanimously. We then discussed what to do with "our" show trophies. These were best cactus and best succulent that we had before we had a combined show. Kathi Reyes moved and Bill Hagblom seconded that they be awarded in the future at the next meeting following the show to our club members based on total points won in the show. The motion passed unanimously.

Ted Taylor talked about cloning of cacti and read some information about it. Seems that many plants will grow all year if they were cloned during the active growing season. How about cloning endangered plants?

We then discussed Larry Grammer's phone bill with regard to calls made for the show's benefit. He should be reimbursed. Larry reluctantly agreed to go over his bills and submit a bill to the joint committee.

The plant auction will be November 22 at the Thoerners. They have tables and chairs and someone will help carry plants out. There will be no dealer plants and it will be members only selling. There was much discussion of the sale of smaller plants that are lower in value as it related to taking up time. We discussed putting these plants on other tables for outright sale but it would cause much confusion. Ted Taylor moved and Larry Grammer seconded that anything under \$2 be grouped together and sold as a unit of 3 or more. After some discussion Larry with drew his second and the motion was tabled. Bill Hagblom suggested a value of \$5.00 for a group of 3 plants. Rowena then moved and Bill seconded that plants worth \$2 or less in groups of 3 or more be sold as a unit to save time. Motion was passed.

The next board meeting will be 11-29-87.

Our Christmas party will be the regular meeting date in December. There will be a plant exchange and a free plant for everyone who paid their dues early.

Ted Taylor once again called for garden volunteers for weeding, watering, etc. HELP!

Carol Wujcik moved and Kathi Reyes seconded that we have an end-of-meeting give away plant. This was passed unanimously. This is to encourage people to stay all the way through the business meeting instead of leaving during break. It will be awarded by drawing numbers the same as the promptness prize.

Bill Hagblom suggests we have a large poster made up to display at meetings etc. showing some of our activities to encourage membership. There can be more than one poster. Khobe Reyes wants to do one. Anyone with club related photos to donate please bring them to the meeting for possible use.

The meeting was adjourned at 3:30.

(Typist's and editor's apology - "They" are the same person of course, and I apologize for messy copy. It is difficult to correct what is happening with my machine, and it will need service again. The worry is that when I bring it in for one problem, it comes home with a new one. Meanwhile the editor must leave dollar figures out of the copy, yet I am supposed to include all board meeting minutes. The two directives are in conflict and must be resolved. Please fill in dollar amounts at the meeting.)



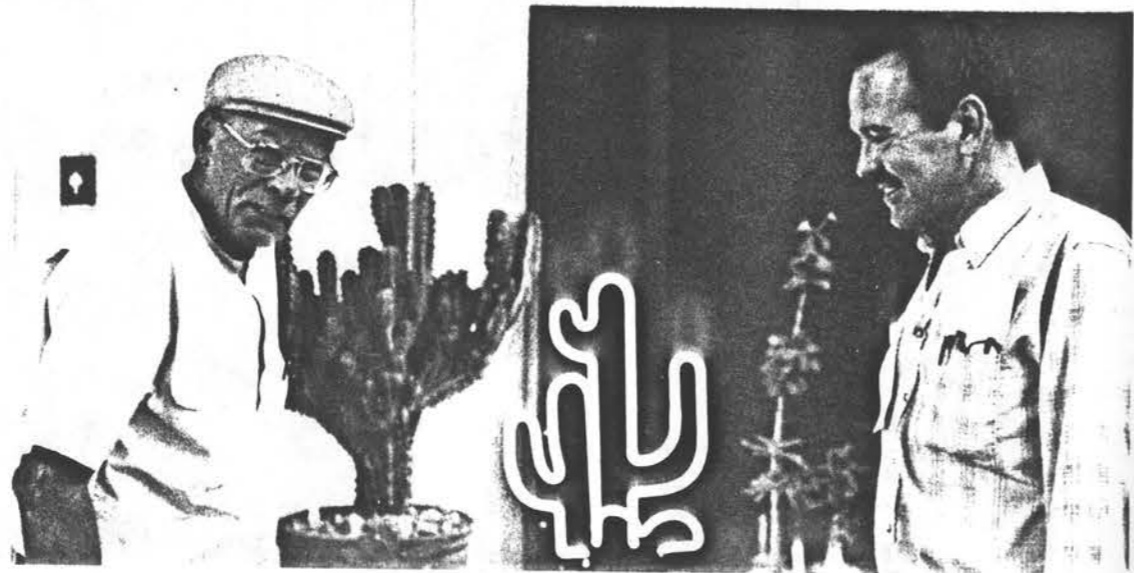
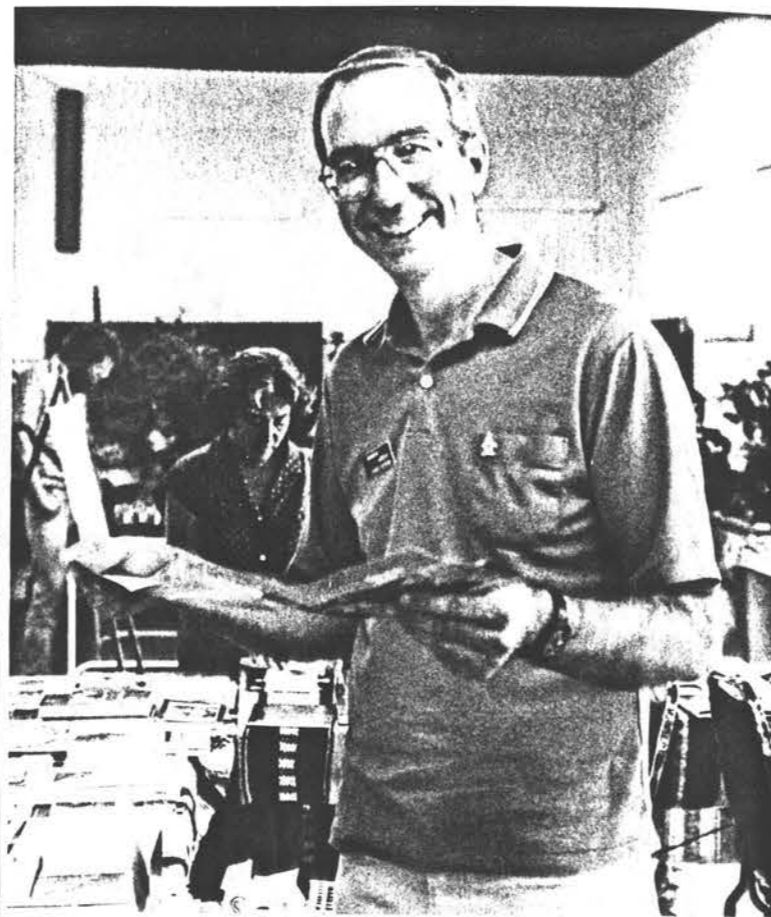
PHOTO ALBUM of 1987 INTER-CITY SHOW PICTURES. (The photos were chosen for their ability to reproduce "relatively well" on a copier). Above is LBCC Show Chairman LARRY GRAMMER, who's proud of the show, the plants, the trophies, and those who worked so hard to make the show a success, including the ladies pictured below: TERRY DEW, our artist & LBCC Membership; CAMILLE RUTKOWSKI, San. Gabriel Soc. Hostess; and MARGE SNYDER, LBCC Membership. THANK YOU TO EVERYONE!





CHUCK EVERSON & JERRY WILLIAMS of Rainbow Garden Books are pictured here with their book sales. They have been very active at club events, & we hope they will continue to be so, despite a longer drive from their soon-to-be new hometown of Vista.

Below is RICK HIPPO of House of Cactus with LBCC Show Chair. LARRY GRAMMER. They are standing in front of the House of Cactus display. All the displays were excellent.



SALES WERE EXCELLENT, and for this special thanks go to LBCC Treasurer Jim Hanna (who was also Sales Chairman for San Gabriel), Bill Hagblom, LBCC Sales Chairman, and Duke Benadom, L.A. Chairman. Sales benefit everyone — the public, the Arboretum, the sellers, and of course the clubs. Jim said, about JERRY CLEMENTS (above right) and DAVID STEMPHOSKI & MARIANNA DEEKEN (below) that they're his kind of people: workers. And work they did, hour after hour, Jerry with sales to the public and David & Marianna with the adding machine in the command post (actually the kitchen!).

Question - Who or what is a "Bobby Dazzle?" ED.

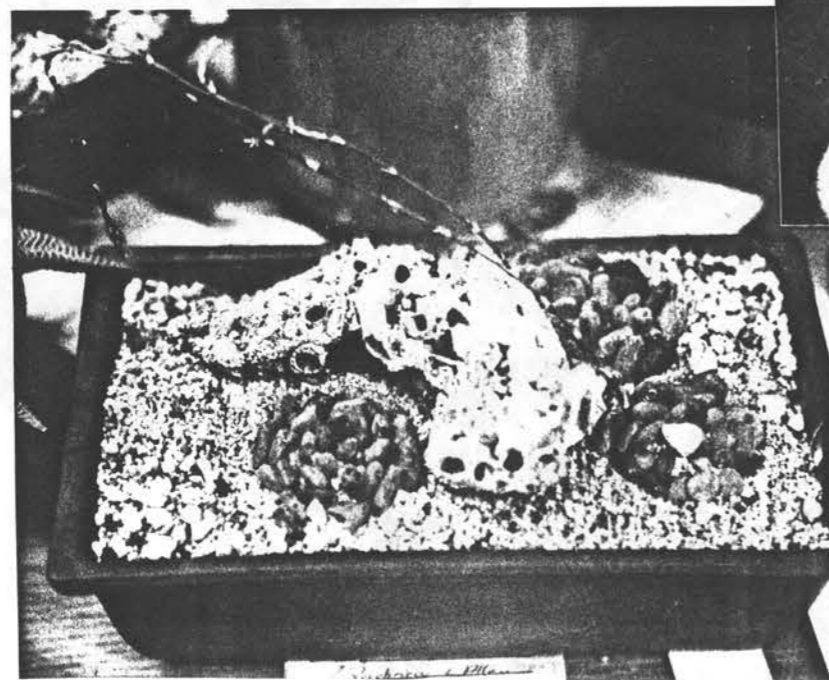




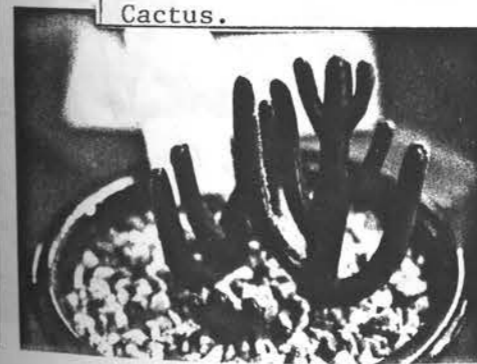
continued...  
 art, LIT PHAN has also  
 achieved a feeling of  
 balance, even stability,  
 with this *Bursera*. Lit  
 Phan is a master of  
 Vietnamese bonsai,  
 called Hon Non Bo.

Below is a remarkable  
 seedling cluster of  
*Cereus plastikii* grown  
 & staged by KATHI &  
 KHOBE REYES. BARBARA  
 ALLEN'S *Haworthia*  
 'glasseye' was not only  
 flowering, but was  
 entered as a single  
 specimen so is no  
 doubt stoloniferous!  
 Does this mean that  
 cuttings may be taken  
 & the plant eventually  
 be propagated for an  
 eager *Haworthia* public?

To the right we have  
 what appears to be  
 another man-plant  
 hybrid, but as you can  
 see by the next photo,  
 the apparition has an  
 eye, and a nose, & in  
 fact is in reality a  
 shy, unique, really  
 into plants person —  
 BARRY PECK of Peck's  
 Cactus.

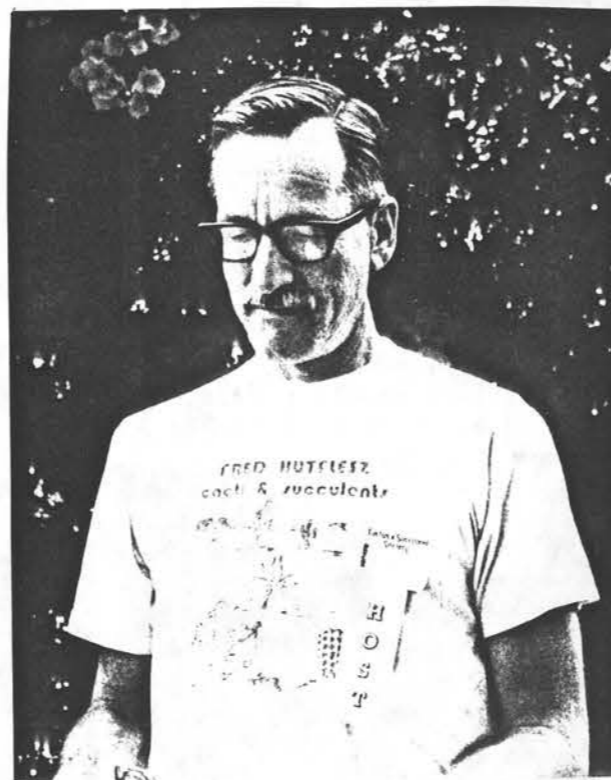


CENTERFOLD PAGE — On this  
 page we feature unusual,  
 fantastical creatures from  
 the world of cactus & the  
 other succulents. Above is  
 THE FAN DANCER, thusly titled  
 by Joe Wujcik, but in reality  
 labeled *Cyphostemma uter* &  
 grown by the remarkable Lit  
 Phan of San Diego. Above  
 left is what appears to be  
 half man, half serpentine  
 plant, locked in some mighty  
 struggle, yet as a work of





PORTRAITS — Above left is LBC President ROWENA THOMPSON who was sitting with Lillian True (the editor regrets that this part of the photo's negative had damage & so could not be reproduced). Photo above right is of SADIE BALL, who with Lillian and Jacques de Tisne have participated in all our shows. And to the lower right is FRED HUTFLESZ, Show Chairman for the San Gabriel Society, although he is a member of all three clubs. Fred is looking quietly pleased with whatever he's holding in his hand — possibly the day's sales receipts?! Fred did the final bookkeeping & recordkeeping for the show & sale — a job requiring dedication & much time.



CAN YOU PICK OUT THE BLUE RIBBON PLANT? If the photograph below reproduces well enough, you may be able to choose the Sulcorebutia arenacea cluster which the judges thought best. (If the photo does not reproduce well, I'll bring the photo to the meeting & put it on the show & tell table. In fact I'll bring it regardless. ED.) OK, have you studied the plants?

And the winner was the plant to the far right. It's Woody Minnich's plant, and the areoles are each very distinct and each head is round and symmetrical. Maybe at the meeting some of our resident judges can tell us more. (Lillian True has a theory which may apply here. She suspects that when there are two almost equal plants, the one in the more squat pot will win. What do you think?) In any event, the areoles of Woody's plant are remarkably defined. They punctuate the plant. It's hard to tell from the photo, but perhaps it was in growth. The wool appears fresh and white.

However they're all beautiful plants grown by master growers. And as for me, I wouldn't mind having any one of them!



PHOTOS OF EVERYONE WHO HELPED LBCC & THE OTHER TWO CLUBS MAKE THE INTER-CITY SHOW A SHOW OF SHOWS....APPEAR IN THIS SPACE!!! BUT ONLY IF YOU USE YOUR IMAGINATION. Your editor regrets not having enough photos altho she has quite a few! But most will not reproduce with a copier & those reproducing the best were chosen. Also a newsletter such as this has limited space. So please imagine your own photo here! So many spent so much time and energy on this show that we wish we could include everyone's pix, and that means YOU! However a THANK YOU will have to do. THANK YOU!!!!!!



HOWEVER, WE WILL HAVE PHOTOS FROM THE BOARD MEETING IN NEXT MONTH'S NEWSLETTER -

Along with some fine serious photos, including background shots of our fine Adobe Garden, we will also have photos of: A LEAPING LIZARD!

BILL HAGBLOM IN THE ARMS OF A YUCCA!  
TED (TARZAN) TAYLOR!

Nobody can say the LBCC doesn't have character! Or rather, characters!

Don't miss out on next month's CACTUS COMPANION. Only 25¢ at newstands!



Could the above possibly be a portrait of Henry Varney or even Daryl Koutnik????????????????????

The cartoons on this page are by Lynn Wilson, editor of STUCK-UP NEWS, newsletter of the Cactus & Succulent Society of Tulsa, Oklahoma. We are using them with permission. Thanks Lynn. They show that no matter where the cactus show, the public is much the same!

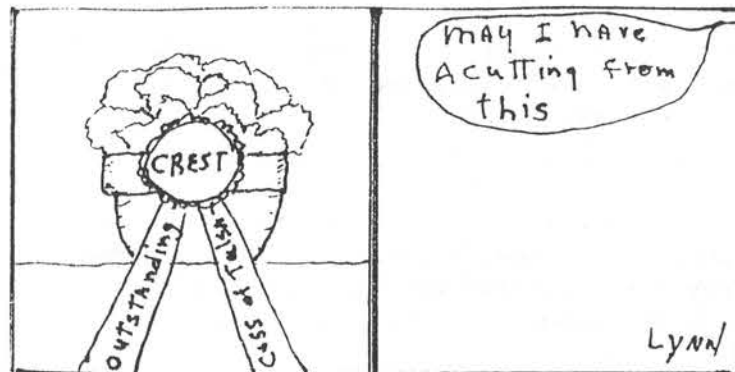
A PLANT WITH CHARACTER: The four *Sulcorebutia arenacea*'s on the previous page are gorgeous show plants. My *S. arenacea* is almost as large a clump. But it's no show plant. The largest head has gone a bit weird as these Sulcos sometimes do. Nor is there any symmetry to the clump as a whole. It's lumpy and wonderful. It has character. It has lived. It has survived. To me it has beauty. If I were to judge it, I would award it nothing in a show. But in my collection, it has a place. No other could replace it because it has past lives associated with it. Along with the label I gave it, it still carries the labels of past growers. I am still learning how to grow it. It prefers what little fiberglass I have to a coastal sun. It's a very picky plant. It doesn't care that it's not show quality. Neither do I. It has character - it's stubborn - it's beautiful. Carol  
\*\*\*\*\*

SOUNDS OF THE SHOW: We all know that there were many wonderful sights at the recent Inter-City Show - the beautiful plants, the displays, the sales areas. But there also were many sounds associated with the show.

Here are a few this observer heard:

- "oof" - 8 men trying to put a 500 pound plant on a display table.
- "wow" - someone entering the show and first seeing the massive variety of plants.
- "click, click" - sales being rung up in the sales area.
- "splash" - water in Lit Phan's Hon Non Bo.
- "grunt, clunk," - Again and again moving and setting up plants and classes as more and more plants came in.
- "moan, scrape,"
- "Hi, Can I answer any questions?" - Hosts being helpful.
- "Clang" - The carts used to move plants in and out.
- "Screech!" - The peacocks.
- "Is that real?" - Asked when looking at *Haworthia 'glasseye.'*

And the most feared sound of all - a child reaching for a plant and saying, "Momma, is this sticker sharp?" Or, "Does this powdery stuff come off the plant?" Then the sound of a little hand being pushed away by Mom.



Finally, the murmur of voices, and laughter - the sounds of friendship.

Joe

## General Announcements . . .

\*\*\*\*\*  
ELECTIONS: We choose our nominating committee in September.  
They report in October. We vote in November. And we  
install the Chosen Ones in December. Then on to 1988.

\*\*\*\*\*

1988 AREA SHOWS: End of April or 1st of May - Sunset & Sacramento  
1st or 2nd weekend in May - San Jose  
May 23 or 24 - Gates (Redlands or Riverside)  
1st part of June - San Diego  
2nd weekend in June - South Coast  
July 4 weekend - CSSA  
September - Northern Cal. Inter-City (Oakland)

ARE THESE CORRECT? DOES ANYONE HAVE MORE COMPLETE INFO?

\*\*\*\*\*

BUS TRIP? What do you think of a bus trip to San Diego to see their  
show? With maybe a side trip into Vista? Or Fallbrook? Or etc.

Let Bill Hagblom know. He's our field trip chairman.

\*\*\*\*\*

Some Sad News: Arthur Breitung was again in the hospital for  
hear trouble, but is home and up and about.  
We hope he'll soon be joining us for a meeting  
again! Write him at 4213 Los Coyotes Diagonal,  
Lakewood, CA 90713.

Also, Claudia Weld is hospitalized and gravely ill.  
We send her and husband Rogers Weld our best wishes.  
If you wish to send thinking-of-you cards, their home  
address is 1311 Fernwood Pacific Dr., Topanga, CA 90290,  
(213) 455-1176.

\*\*\*\*\*

Good News! A baby boy was born last August 12 to John and Daphne  
Trager. His name is Edward Corbet and he weighed in  
at 7 lb. & 4 oz. Congratulations!

\*\*\*\*\*

QUOTE FROM TED TAYLOR

"Wasn't that a magnificent show? I've seen a good many cactus shows  
way back in the 30's when they first started having shows...right  
up to now. This one just took the cake. I thought it was the most  
outstanding cactus show I've ever seen."

## MEMBERSHIP ROSTER

Our beautiful LBCC roster is  
the work of Marge Snyder and Terry  
Dew, Membership Co-Chairpersons.  
The original drawing to the right  
is the work of Terry for the roster  
and it was featured in last month's  
newsletter. The hand sewn binding  
on your roster is in the Japanese  
style, and we doubt any other club  
has anything like it! There is  
plenty of room for corrections  
and additions, so it is a practical  
book as well.



Your roster will be available  
at the meeting if you have not yet  
picked up your copy. It can be sent to you if necessary, but it will  
be costly for the Club. But if there is no alternative, please send  
or call your requests to Marge or Terry, or to your editor.

Marge Snyder, 19009-308 Laurel Park Rd., Dominguez Hills,  
CA 90220 (213) 639-1236

Terry Dew, 5328 Carita, Long Beach, CA 90808  
(213) 429-2539

Or editor (see inside front cover)

## DUES INFORMATION FOR 1988

Dues paid now are for 1988. Regular membership is \$8, senior  
membership is \$5, and each associate (same home) membership is  
\$1.50, regardless of age. (A senior membership is for a retired  
person, 65). Please contact Marge or Terry. Checks should be  
made out to LBCC, Long Beach Cactus Club. Renewals can be paid  
at any time. A thank you gift plant from the Club will be yours  
at the holiday party if you renew or join by then.

WE WELCOME YOUR MEMBERSHIP.

WE WELCOME VISITORS.

LONGTIME MEMBERS: Remember to wear your name badges. New ones  
will be available for ordering if you've lost yours or if you  
have recently joined. Please see the inside front cover.

IF YOU SEE A NEW FACE, SAY HI! To paraphrase Eleanor, "We're a  
friendly club. Show it!"



CALENDAR CALENDAR CALENDAR *Mark Your Calendar Now!*

- Sept. 27, Sunday, OUR REGULAR LBCC MEETING at the Library, 1:00 PM, featuring DAVID HARDY OF SOUTH AFRICA, an expert on African succulents including Aloe, & an entertaining speaker.
- Oct. 14, Wed., GROWER'S MEETING AT OUR ADOBE GARDEN. This is not a Club activity, but we hope our garden is looking good for the S. Cal. Cactus Growers. (Hint, hint all you weeders)
- Oct. 16 - 25, The Los Angeles Garden Show from 10 AM to 6 PM, at the LA Arboretum on Baldwin in Arcadia. Big general show & sale.
- Oct. 25, Sunday, OUR REGULAR LBCC MEETING at the Library. The auction has been postponed until November.
- Nov. 22, Sun. 1:00 PM OUR BIG PLANT AUCTION at Bob & Sharon's in Bellflower. Start getting your sale plants ready. Start saving your pennies. This has been a great auction every year. Our own Jacques de Tisne is Auctioneer Extraordinaire. And this year there will be people to help you load & unload. It will be outdoors unless it rains - if it does, no problem. We'll be indoors! (If you have small or common or immature plants of about \$2 or less each, group them together by 3's or more.

Mid-July, 1988, ALOE 88 in Zimbabwe, Africa. There will be more information in next month's newsletter. If enough want to go from the U.S., perhaps there will be ways to charter a plane(s).

Long Beach Cactus Club Newsletter  
THE CACTUS COMPANION  
10860 El Mar Avenue  
Fountain Valley, CA 92708

FIRST CLASS

FIRST CLASS



GOOD SHOW EVERYONE!