

September 2006

Roadrunner News

Newsletter of the Long Beach Cactus Club

Founded 1933; Affiliate of the Cactus and Succulent Society of America, Inc.

ANNUAL PLANT AUCTION

PROGRAM: Everyone is invited, but you must be a member to auction plants. Terms are cash, check or credit card (Visa or MasterCard). If you're not already a member you can sign up on auction day. The split is 20% for the club, 80% for the seller. Members may also donate a plant or two! Plants should be adult specimens in good condition and not too common. Something you'd like to bid on yourself! They should be clean and bug-free. Previous show winners and potential winners are often available as interests change and plants are sold to make room for new favorites.

LOCATION: **Dominguez Adobe**, 18127 South Alameda Street, Rancho Dominguez, CA 90220. Take the 91 Redondo Beach/Artesia Freeway and exit south on Alameda. Signs for the Adobe are posted on the freeway and on Alameda. Coming from the freeway, the entrance to the Adobe is on the right or west side of Alameda. We will meet outside next to the club's official cactus and succulent garden.

TIME: **Sunday, September 24, 2006.** Setup at 10:00 a.m. The Auction will be held between 11:00 a.m. and 3:00 p.m.

REFRESHMENTS: Bring a sack lunch. The club will provide drinks and chips. Also, please bring your own folding chair.

QUESTIONS? Call President **Gary Duke** at (714) 377-0064.

2006 LBCC PROGRAMS AND EVENTS

Woody Minnich, Programs (661) 944-2784

Oct. 22	Tom Knapik - "Brazil"
Nov. 19 - 3 rd Sun	Kelly Griffin - "Northern Mexico"
Dec. 10 - 2 nd Sun	Holiday Feast, Festivities & Auction with South Coast C&SS

21st Annual Intercity
Cactus and Succulent
Show



I am happy to report that this year's **Intercity Show** was one of the best as reported by the public and club members alike. The amount of show entries and the variety of plants were at an all time high. In the sales area there were times when lines of customers were seen to be 15 deep, even with three cashiers. I was delighted to see the high number of Long Beach Cactus Club members participating throughout the show weekend. This year we had the highest level of club member participation in the history of Intercity. I would like to recognize a very special and generous donation made to this year's show by **Laverne Pitzer** who was unable to physically attend, which went a long way in supporting refreshments for all of the show workers that weekend. From the show set-up on Wednesday, through the judging on Friday and on through the show all day Saturday and Sunday I saw many of our members assisting customers as well as performing many of the tasks required to maintain a show of this magnitude. Many of us also did our part in the show sales area, buying as much or sometimes more than the public. But no wonder, since there were so many rare and unusual cacti and succulents to choose from again this year. Thanks everyone for your continued support. *Harry, Show Chair*

The 13th Annual Winter Show

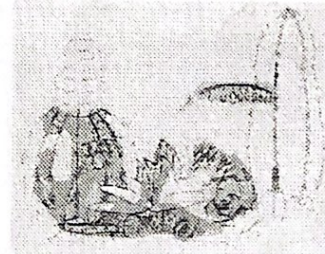
October 14 & 15, 2006

At the Los Angeles County Arboretum
301 N. Baldwin Avenue Arcadia, CA
(across from Santa Anita Race Track)

Featuring winter growing succulents throughout the world!

Presented by the

San Gabriel Valley Cactus and Succulent Society



Come and celebrate our 13th anniversary with us! 1000 Show specimens are expected to be on display and many unique and hard to find plants will be available to purchase from some of California's finest growers!

For more information please call...

Show Chairman: Vince Basta (714) 738-1422

Sales Chairman: Jim Hanna (562) 920-3046

Treasurer: Amber Jones (951) 827-5220

Publicity: Bill Gerlach (626) 332-8008

LONG BEACH CACTUS CLUB
PRESENTS ITS
ANNUAL AUCTION
OF
CACTUS & SUCCULENT PLANTS
SEPTEMBER 24, 2006 11 AM - 3 PM

DOMINGUEZ ADOBE
18127 S ALAMEDA STREET
RANCHO DOMINGUEZ, CA 90220



Contact: Gary Duke (714) 377-0064

*Sodas will be provided

*BYO Sack Lunch

*Set up 10:00 A.M.

Roadrunner News

Newsletter of the Long Beach Cactus Club
2075 E. Appleton St. #24
Long Beach, CA 90803-6205



FIRST CLASS PLEASE

BUNNELL, Scott
10609 Spry St. #B
Norwalk, CA 90650